

Comune di Gubbio
PIANO REGOLATORE GENERALE
PARTE OPERATIVA

Arch. Vanessa Squadroni
Arch. Francesca Uccellani
Ing. Marco Ciamarra
Geom. Federico Paciotti
Geom. Maria Vergari
Geom. Giorgio Ricci
Sig.ra Patrizia Bei
Sig. Raul Cambiotti
Sig. Enzo Picciolini
Arch. Cecilia Gaggiotti
Arch. Angela Nave

CARTA DEL CENTRO STORICO
scala 1: 1.000

Ing. Luigi Casagrande _____

con la consulenza generale di:
Prof. Arch. Bruno Gabrielli _____
(coordinatore dei consulenti)

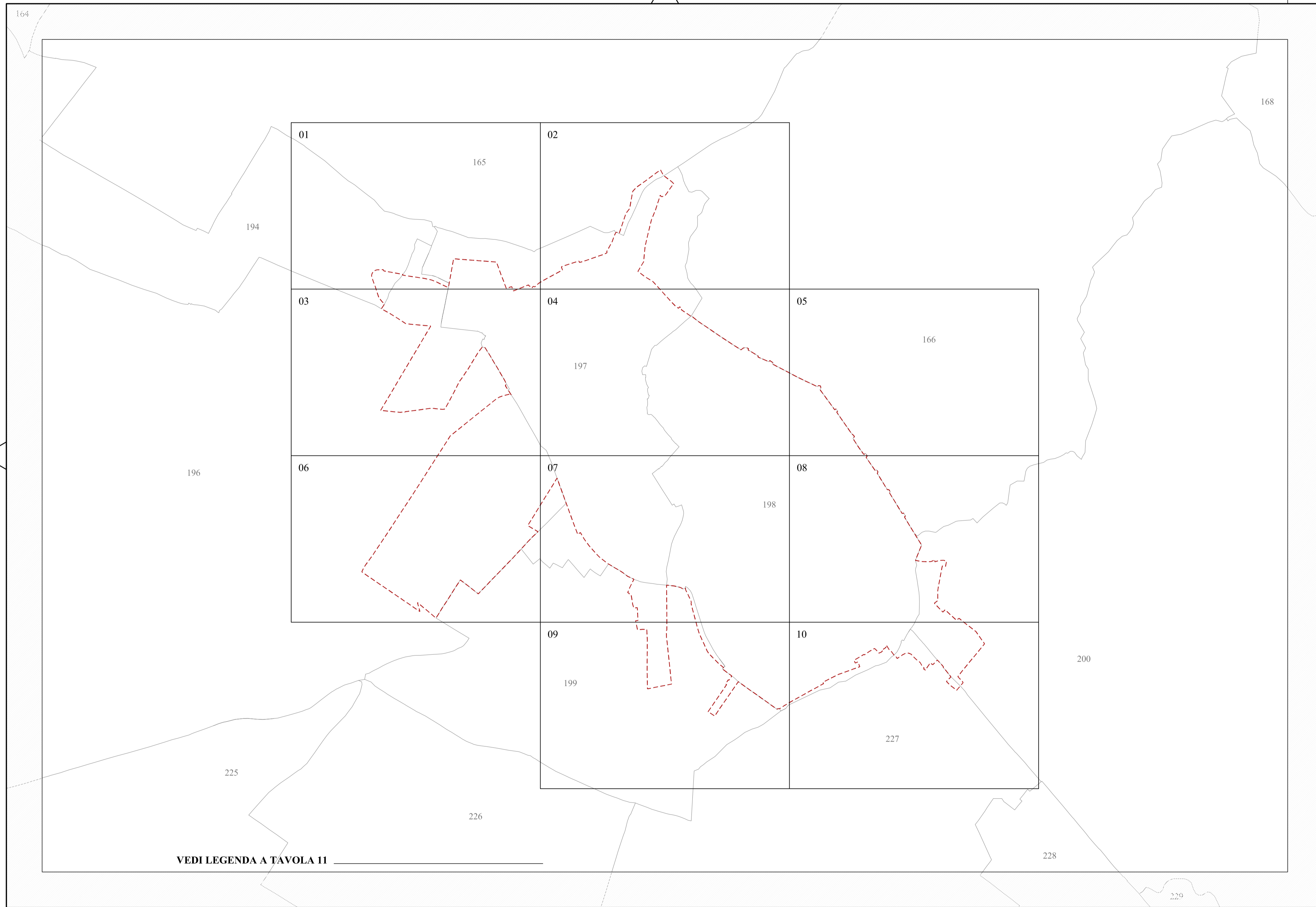
Prof. Arch. Cesare Macchi Cassia _____

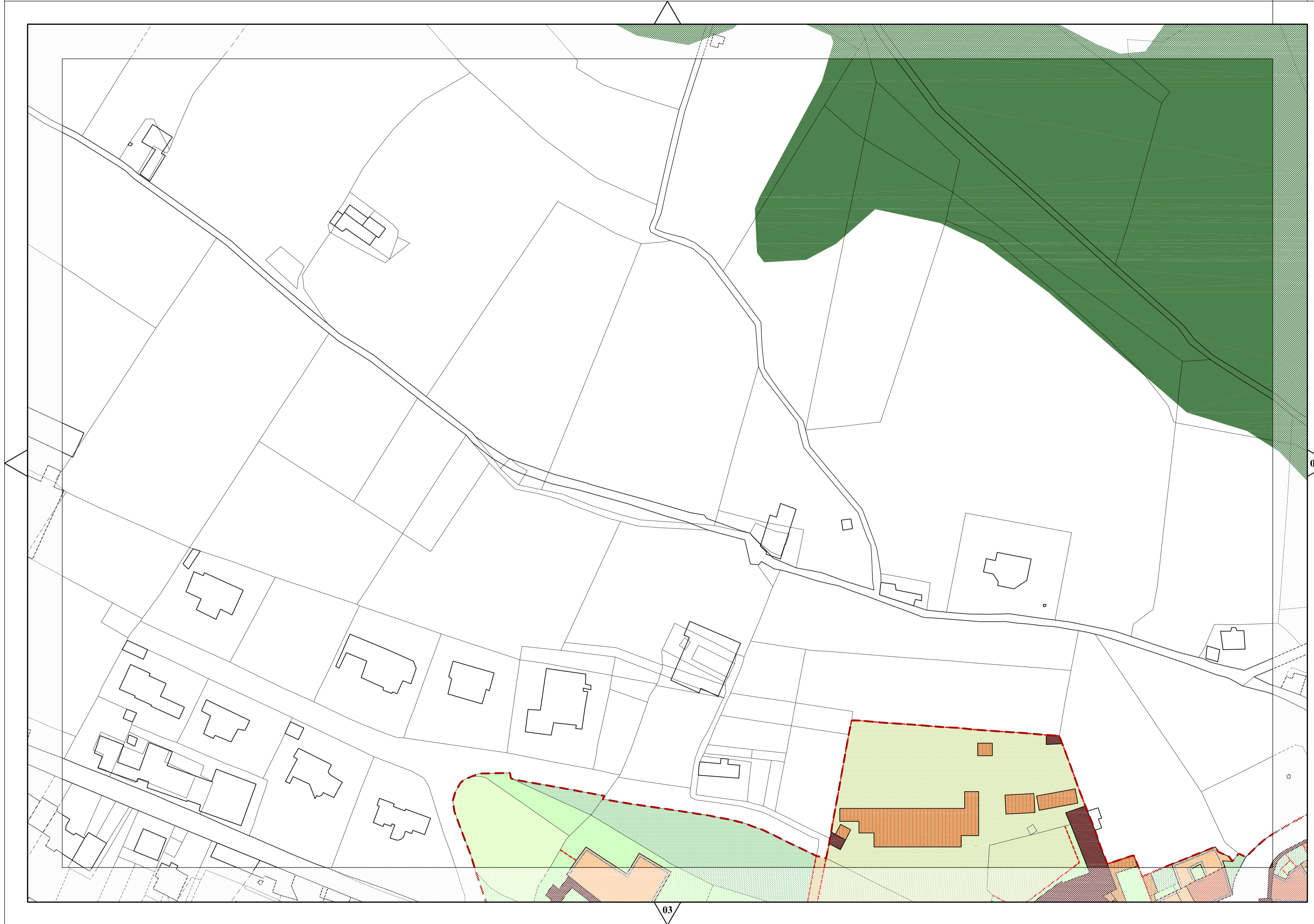
Prof. Arch. Alberto Magnaghi _____

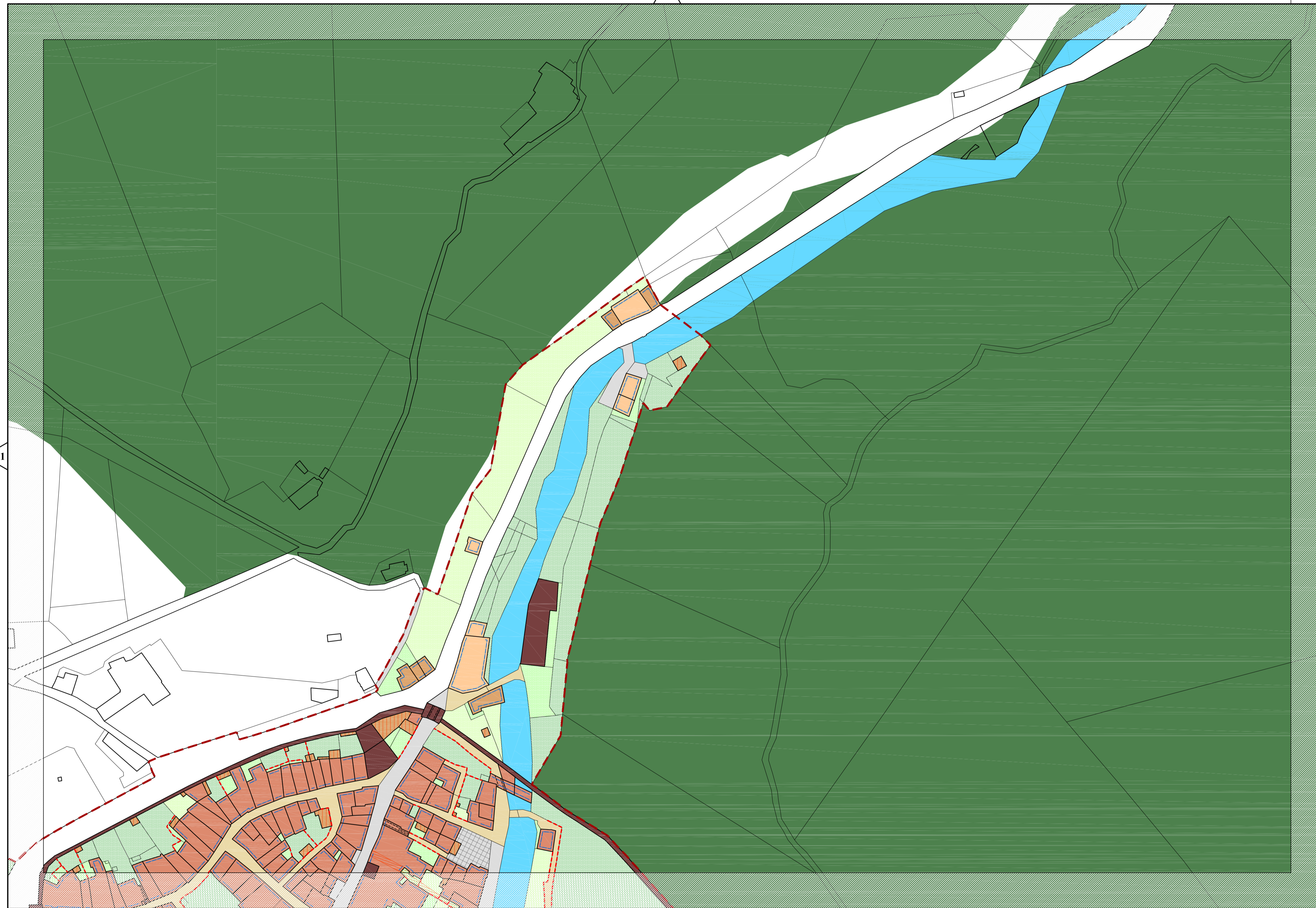
consulenze specifiche:
Prof. Arch. Ugo Ischia
Arch. Massimo Bastiani

Eo.3

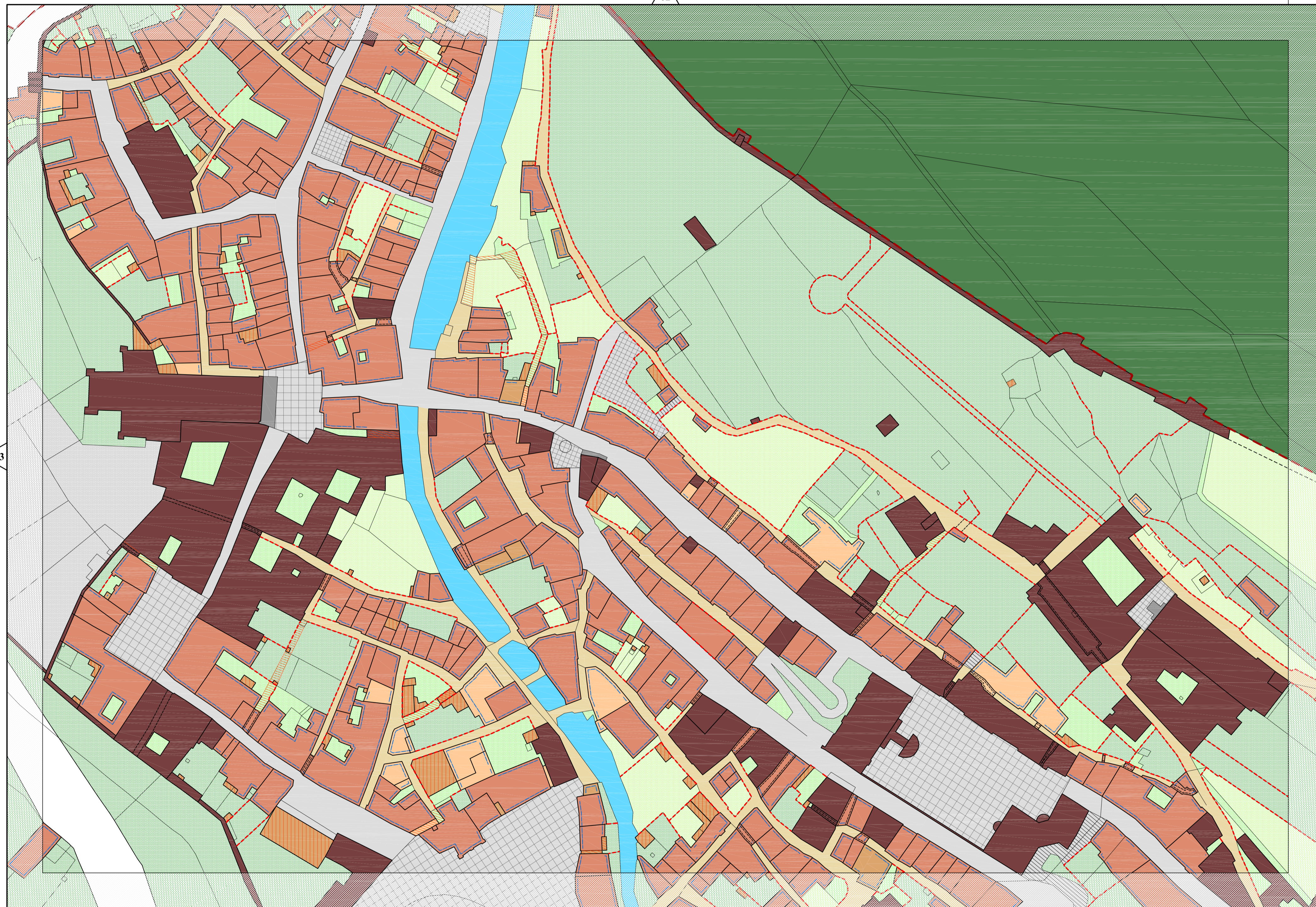
Settore Pianificazione Territoriale ed Edilizia

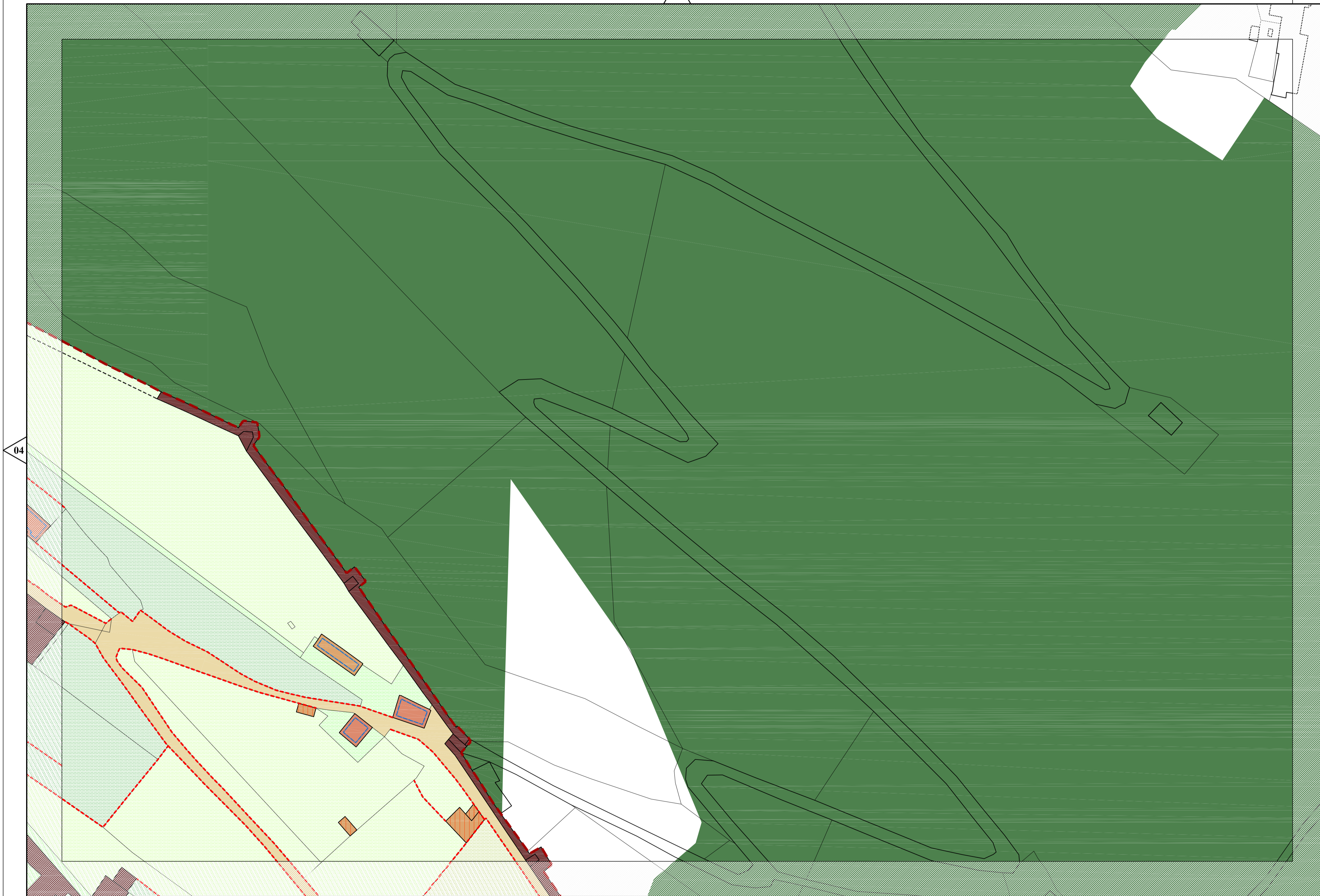


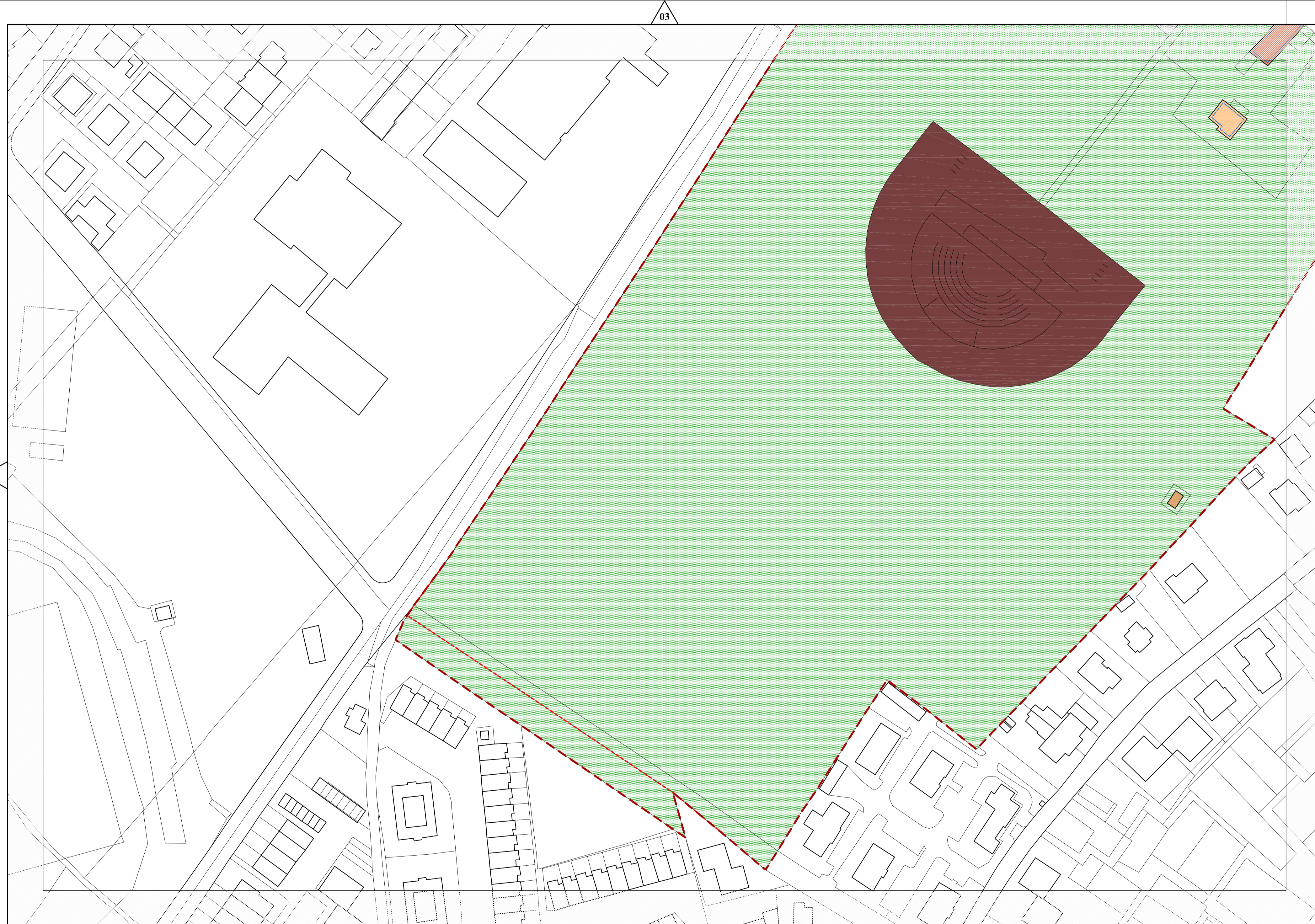




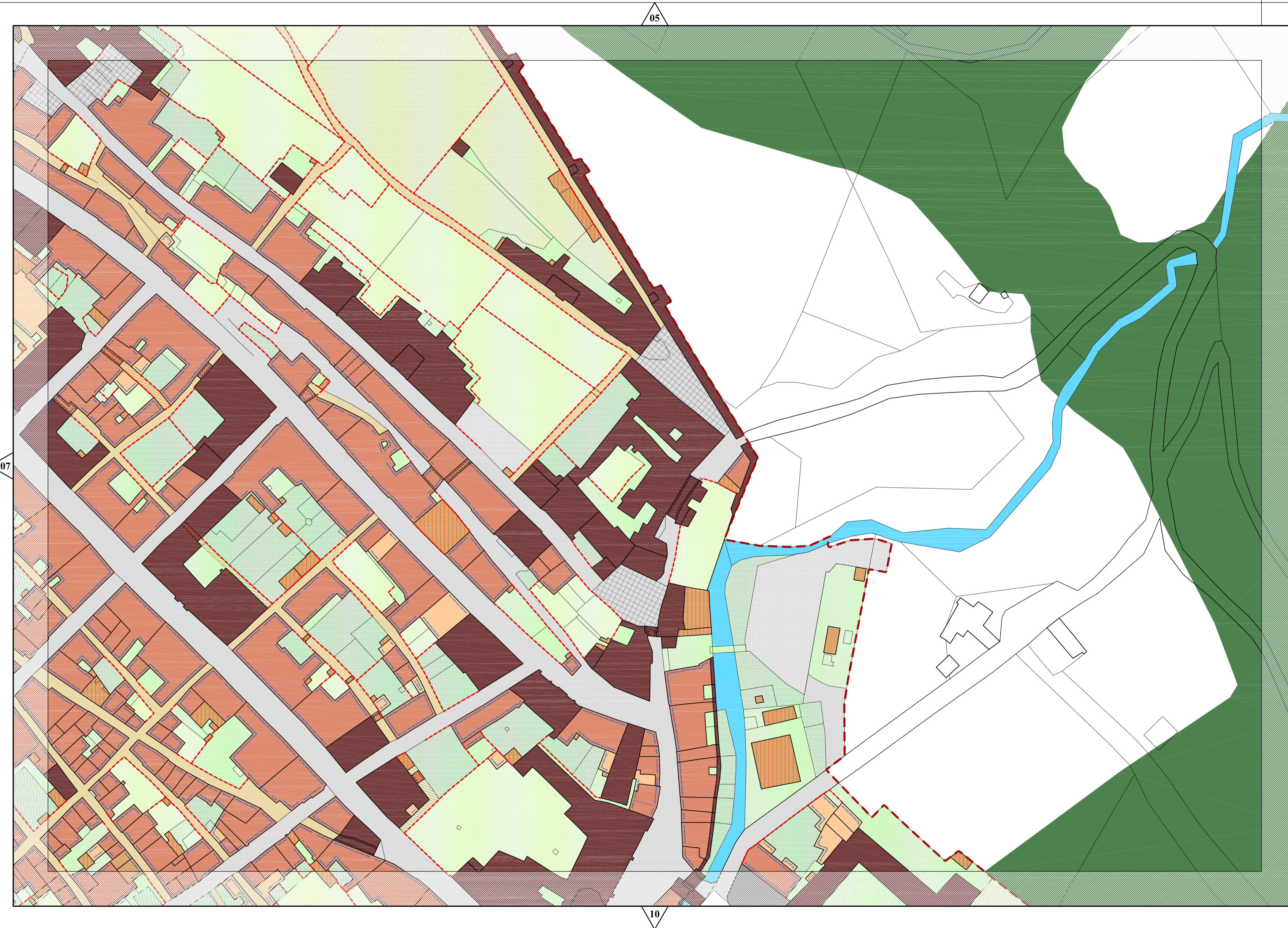






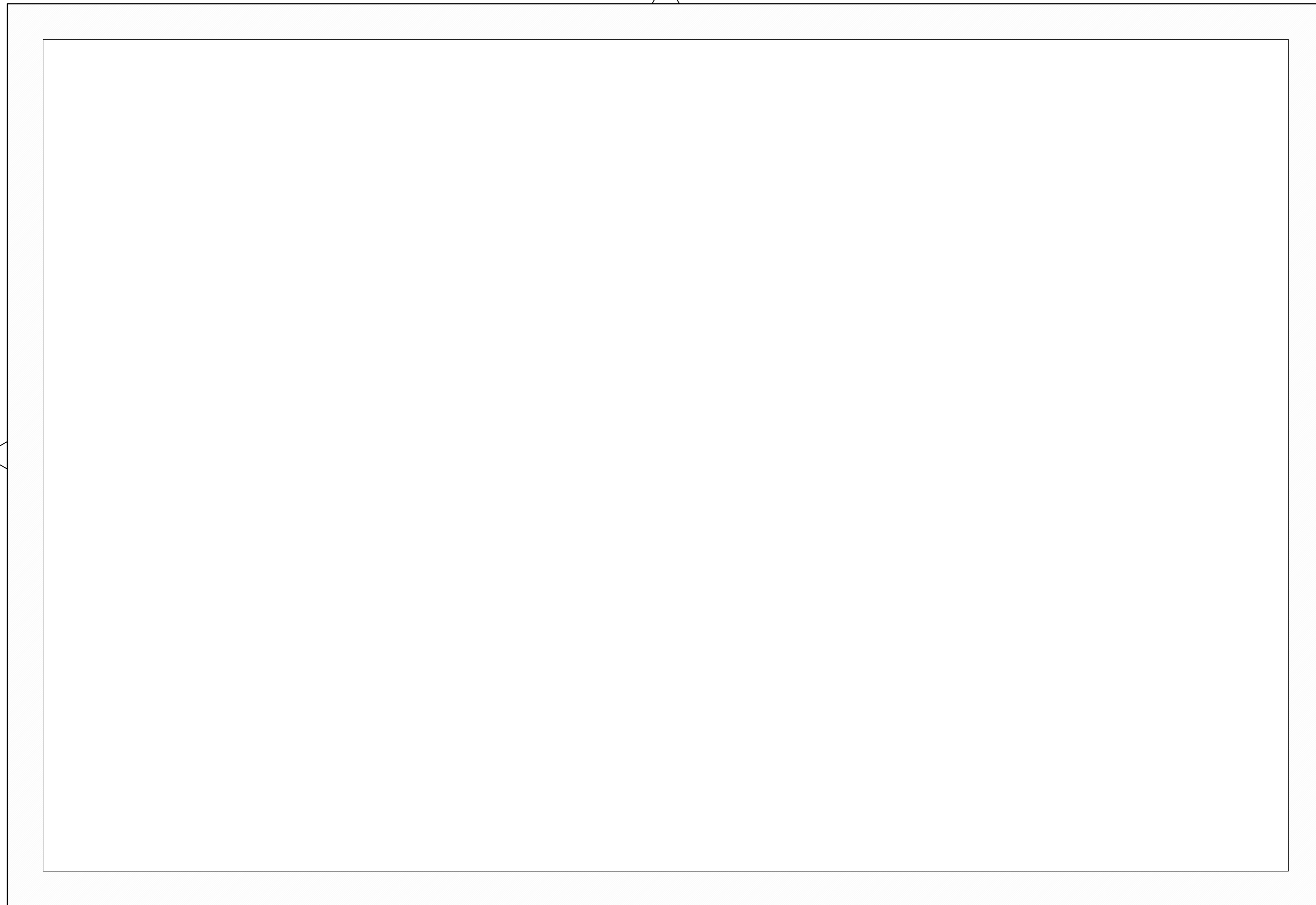











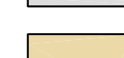


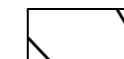
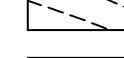










	Macroarea Centro Storico
Tessuti	
	Tess. di edilizia mon. o di rilevante interesse storico arch.- elementi strutt. del tessuto urb.
	Tess. di edilizia tradizionale prevalentemente integra
	Tess. di edilizia tradizionale prevalentemente alterata
	Tess. di edilizia recente o totalmente degr., priva di caratteri arch. rilevanti
Spazi aperti	
	Giardini e parchi
	Giardini e cortili
	Orti e seminativi
	Orti dei conventi e dei monasteri
	Sistema delle piazze
	Larghi
	Scalinate
	Sagrati
	Strade di attraversamento
	Strade pedonali e carrabili
	Sistema dei vicoli
	Vicoli e scalinate da riaprire
	Parcheggi
	Facciate
	Recinti
	Edifici da demolire
	Sottopassi
	Aree boscate
	Corsi d'acqua
SISTEMA DELLE INFRASTRUTTURE PER LA MOBILITA'	
	Viabilità primaria: strade extraurbane secondarie esistenti
	Viabilità primaria: strade extraurbane secondarie di progetto
	Viabilità secondaria: strade extraurbane secondarie esistenti
	Strade locali esistenti
	Strade locali di progetto
	Strade vicinali