

Comune di Gubbio
PIANO REGOLATORE GENERALE
PARTE STRUTTURALE

Arch. David Cocca
Arch. Paolo Chirilli
Arch. Silvia Fumacci
Arch. Luigi Rosati
Arch. Vanessa Squadroni
Arch. Francesca Ceccolini
Ing. Marco Ciarrara
Dott. in Arch. Leonardo Clementi
Dott. in Arch. Stefano Salvi
Geom. Federico Paciotti
Sig. Giampaolo Lombardini
Geom. Giorgio Ricci
Sig.ra Patrizia Bei
Sig. Rauli Cambiotti
Sig. Enzo Piccolini

CARTA DEI CONTENUTI URBANISTICI ED AMBIENTALI
scala 1: 10.000

Ing. Luigi Casagrande _____

con la consulenza generale di:
Prof. Arch. Bruno Gabrielli _____
(coordinatore dei consulenti)

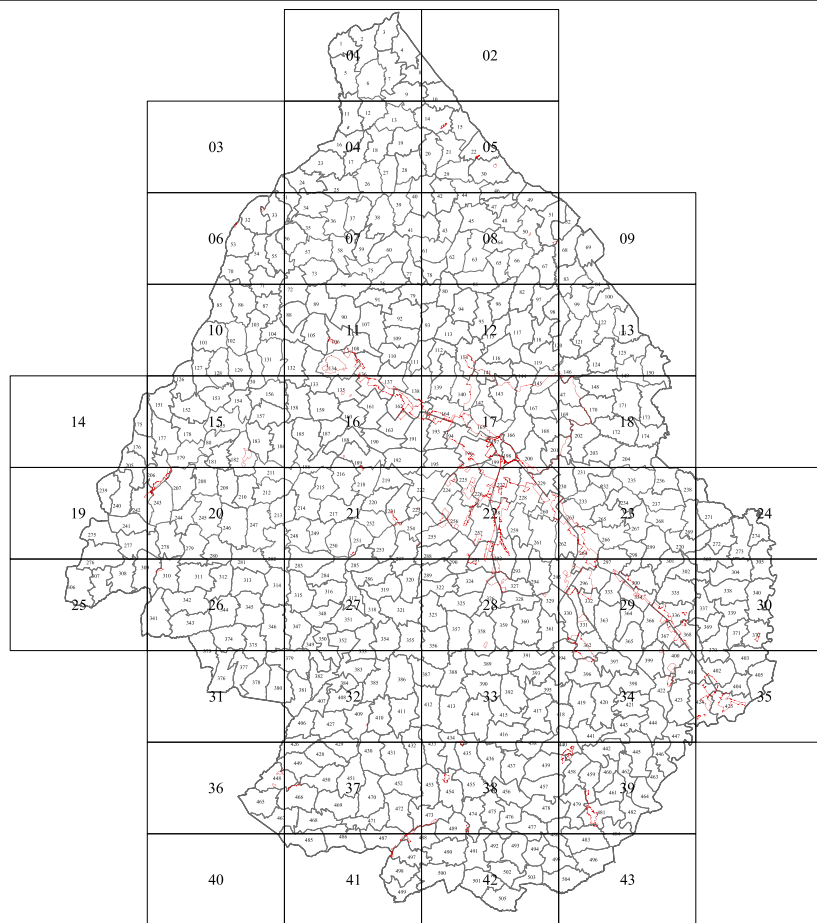
Prof. Arch. Cesare Macchi Cassia _____

Prof. Arch. Alberto Magnaghi _____

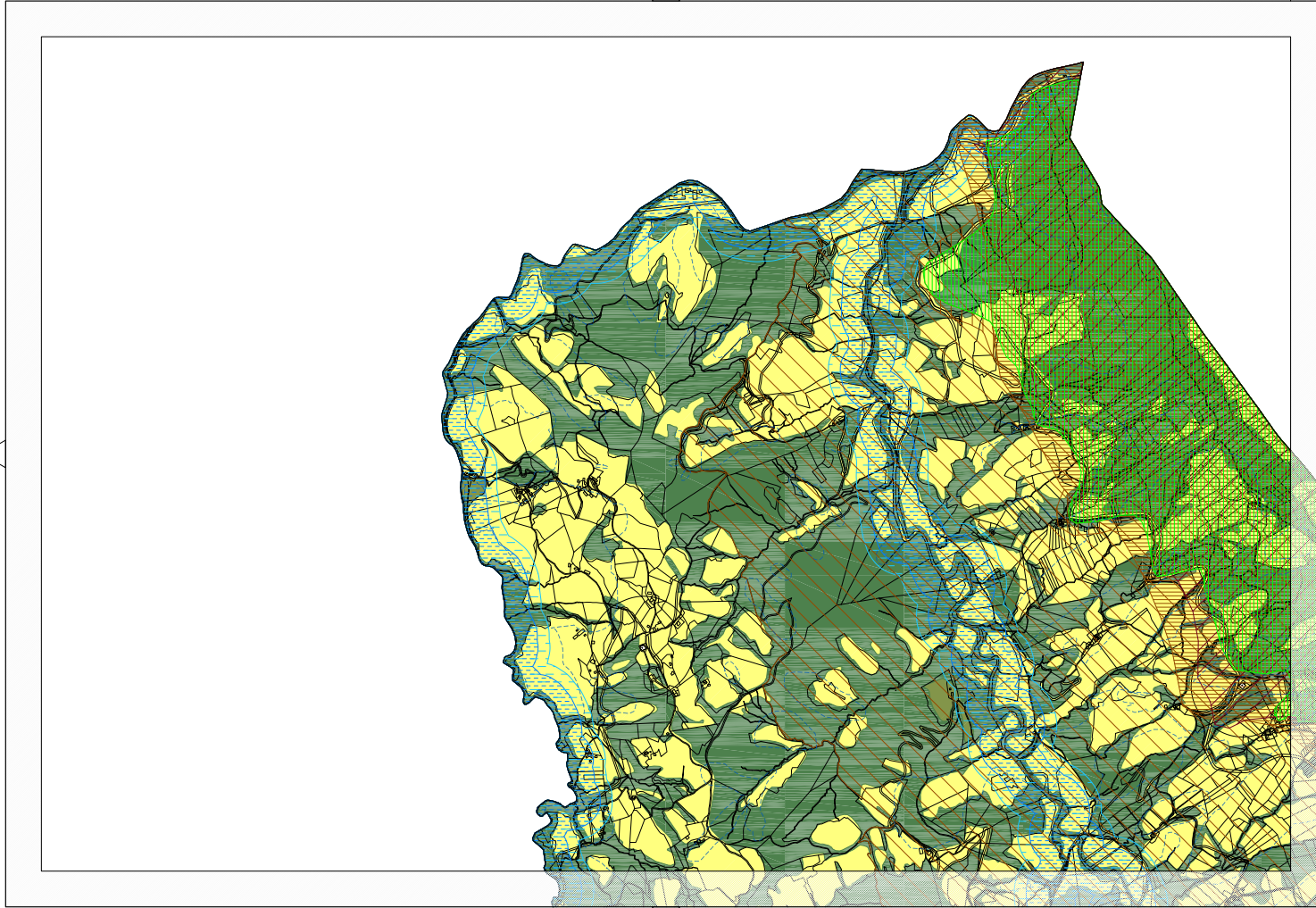
consulenze specifiche:
Prof. Arch. Ugo Ischia
Arch. Massimo Bastiani

Es. 4

Settore Pianificazione Territoriale ed Edilizia

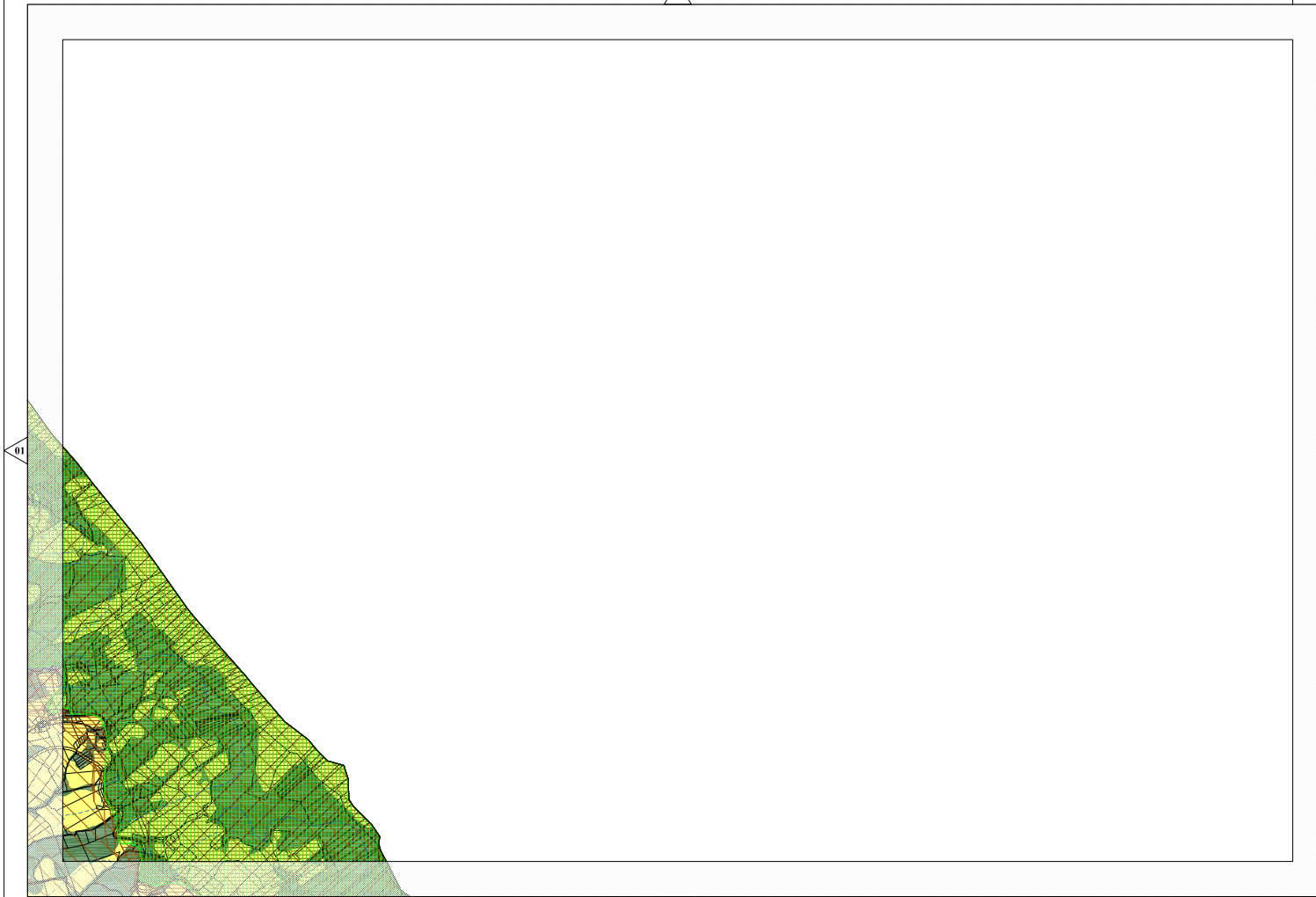


VEDI LEGENDA A PAGINA 44



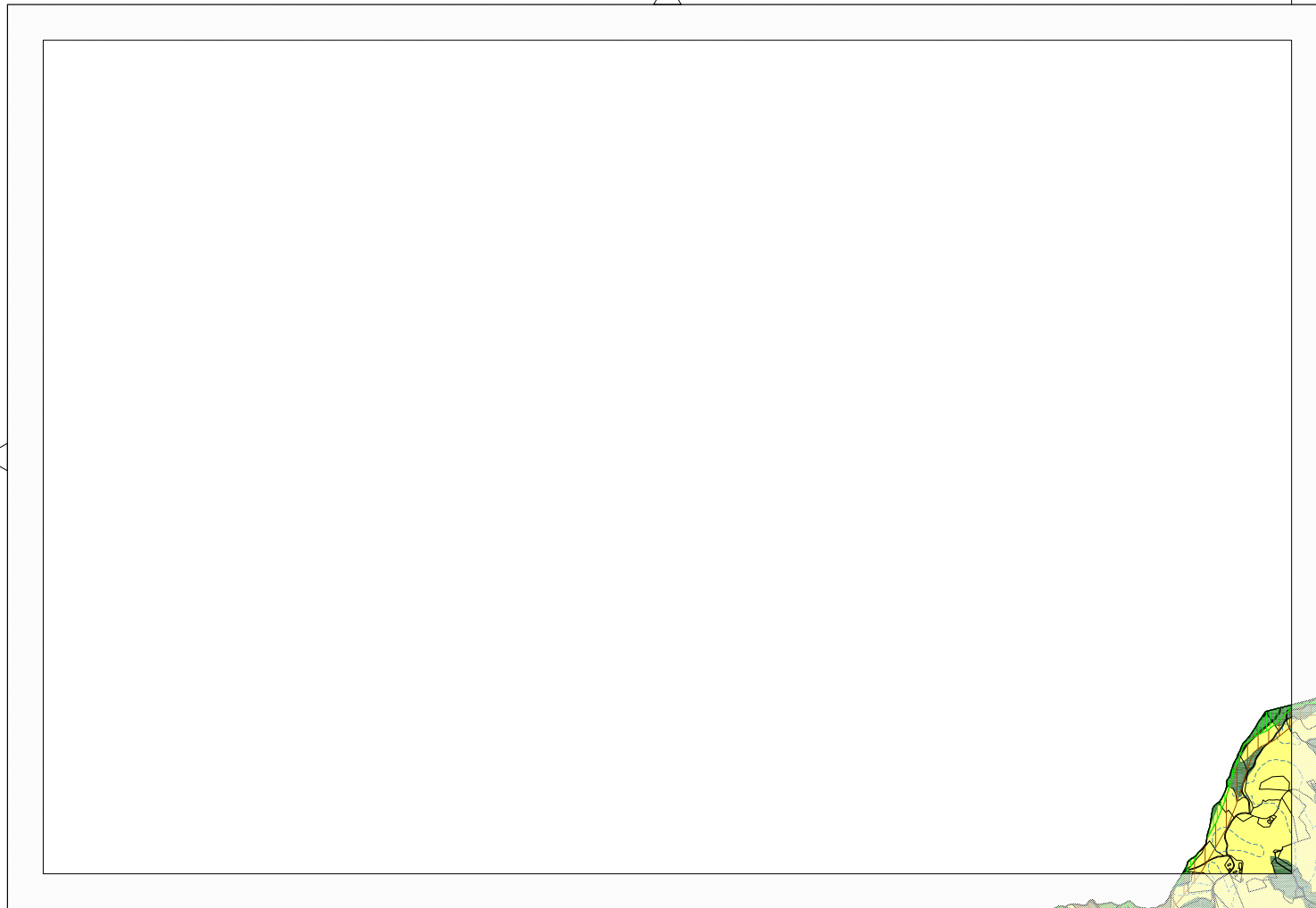
02

04



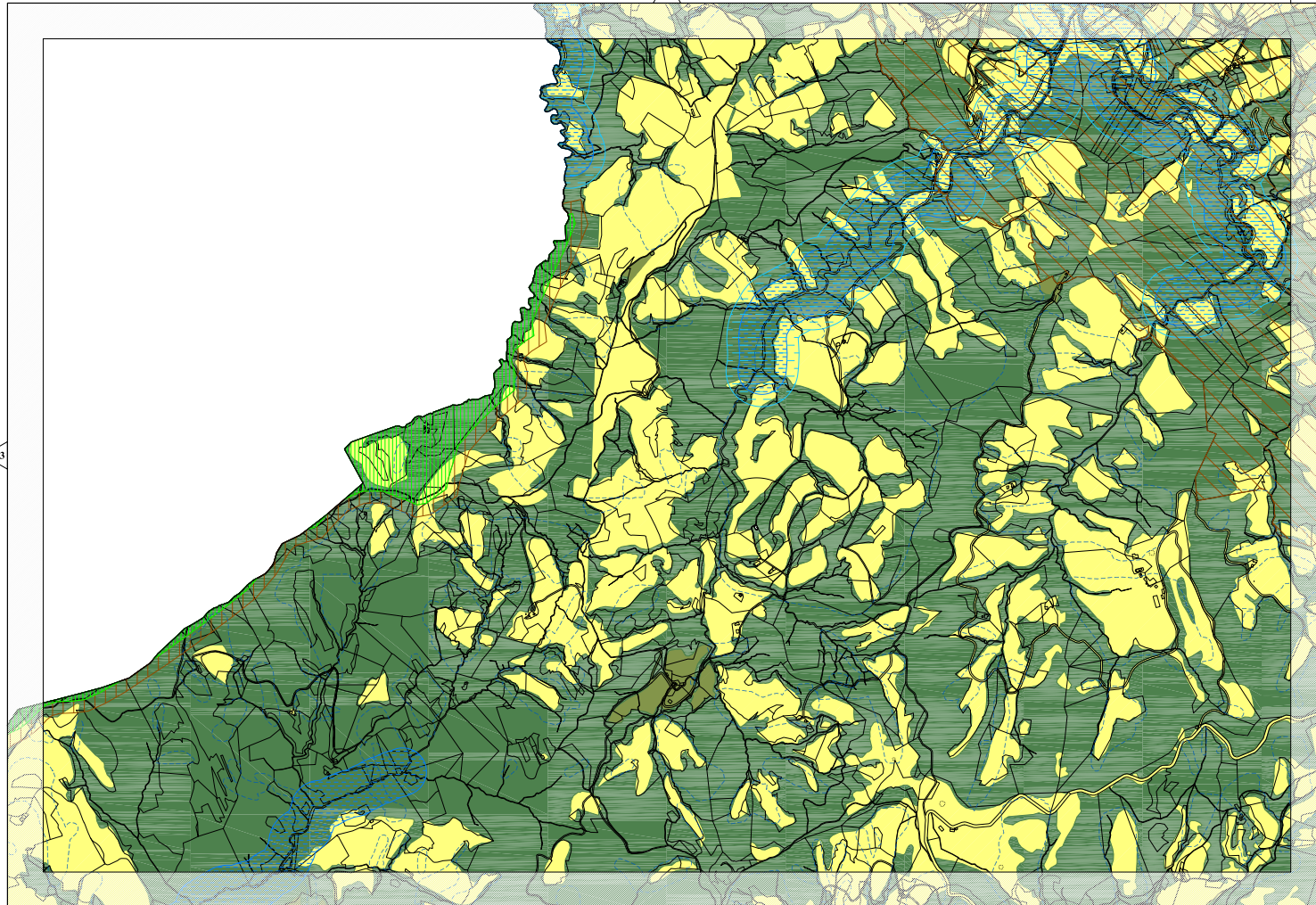
01

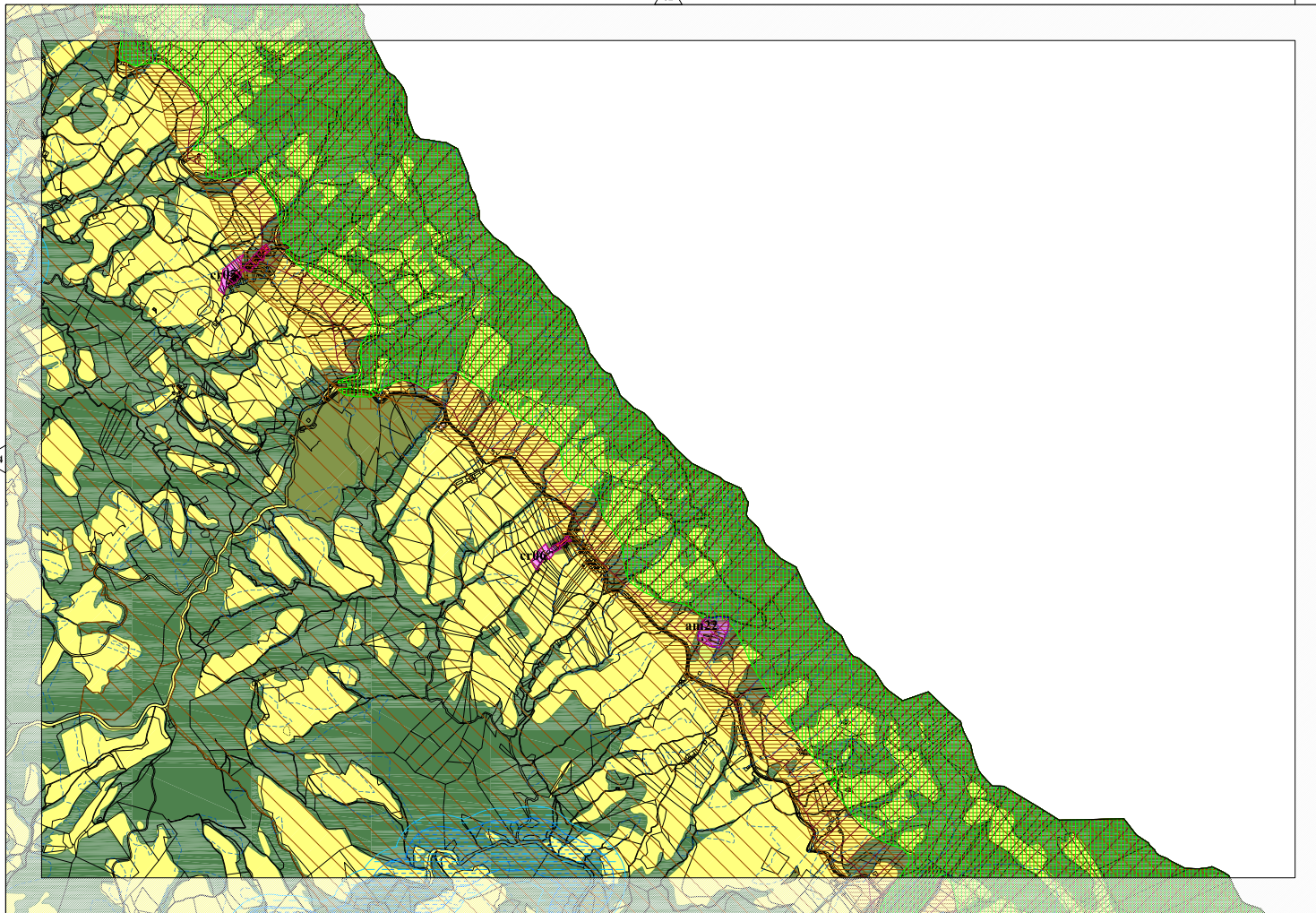
05

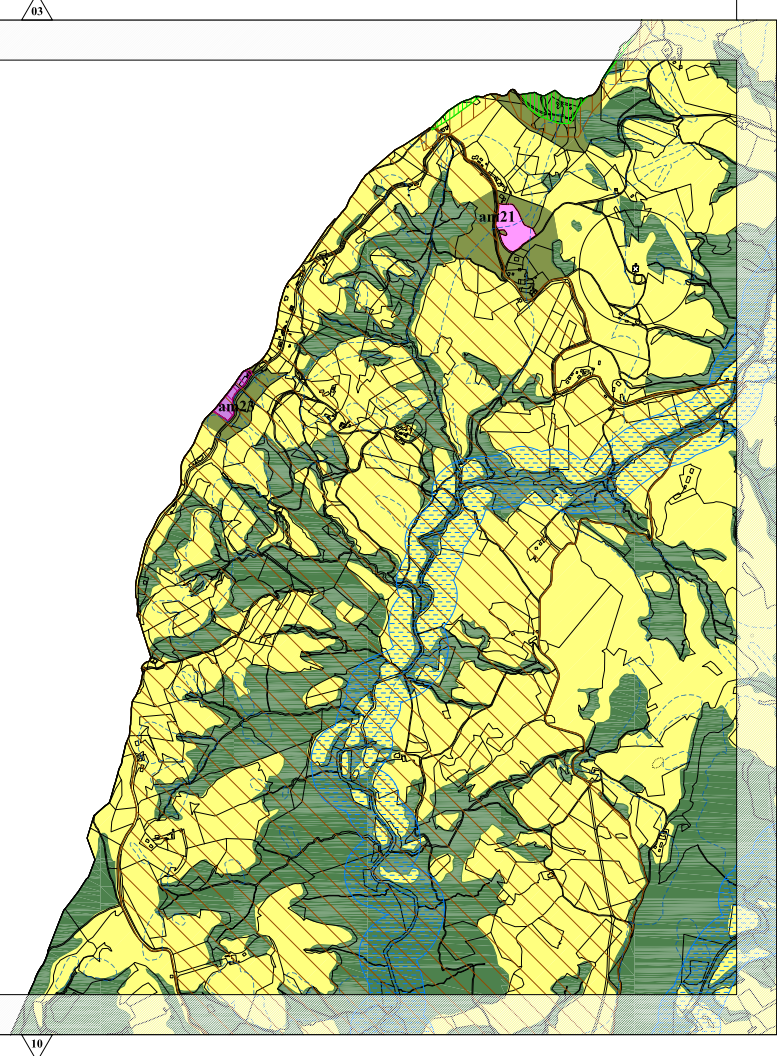


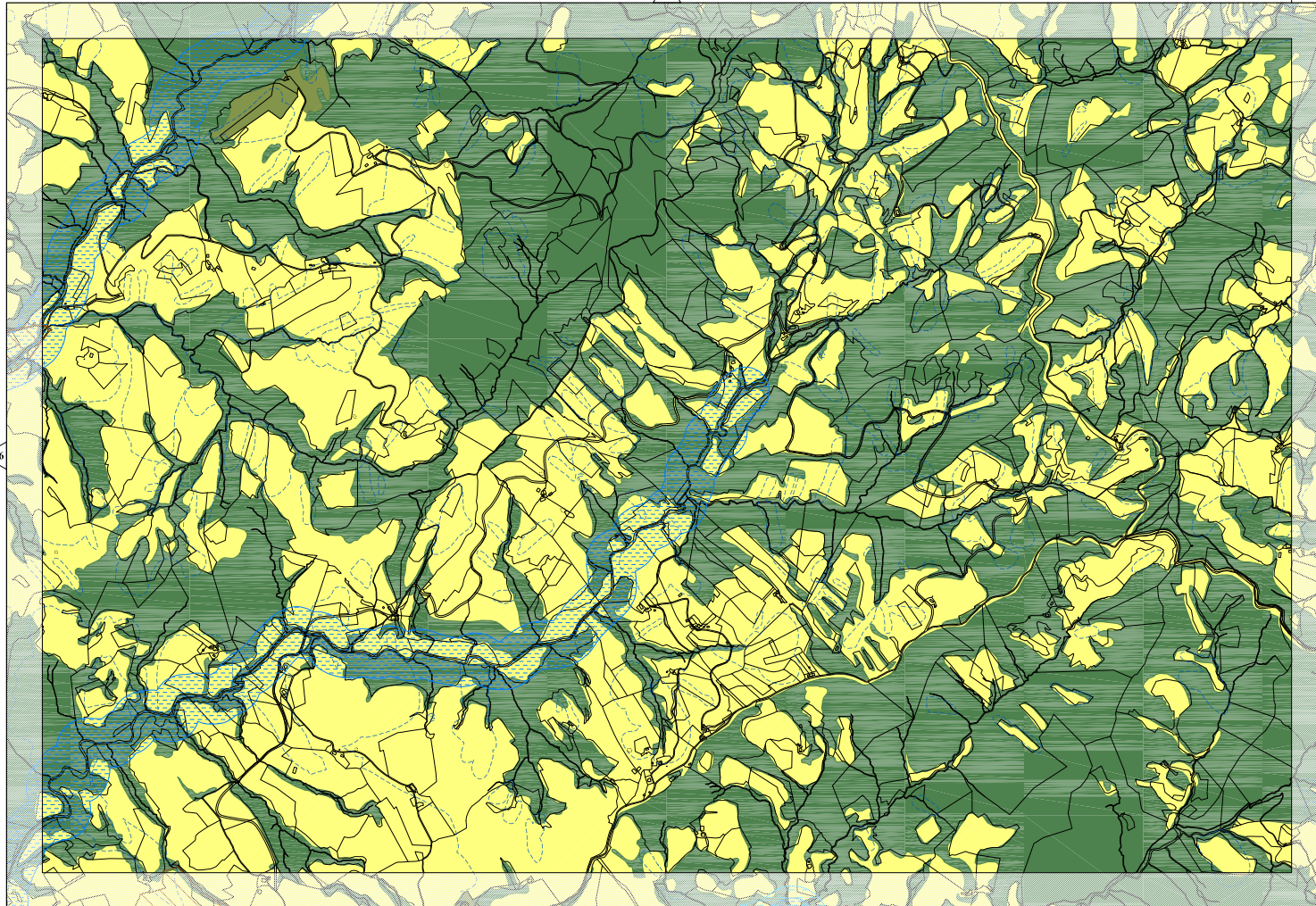
04

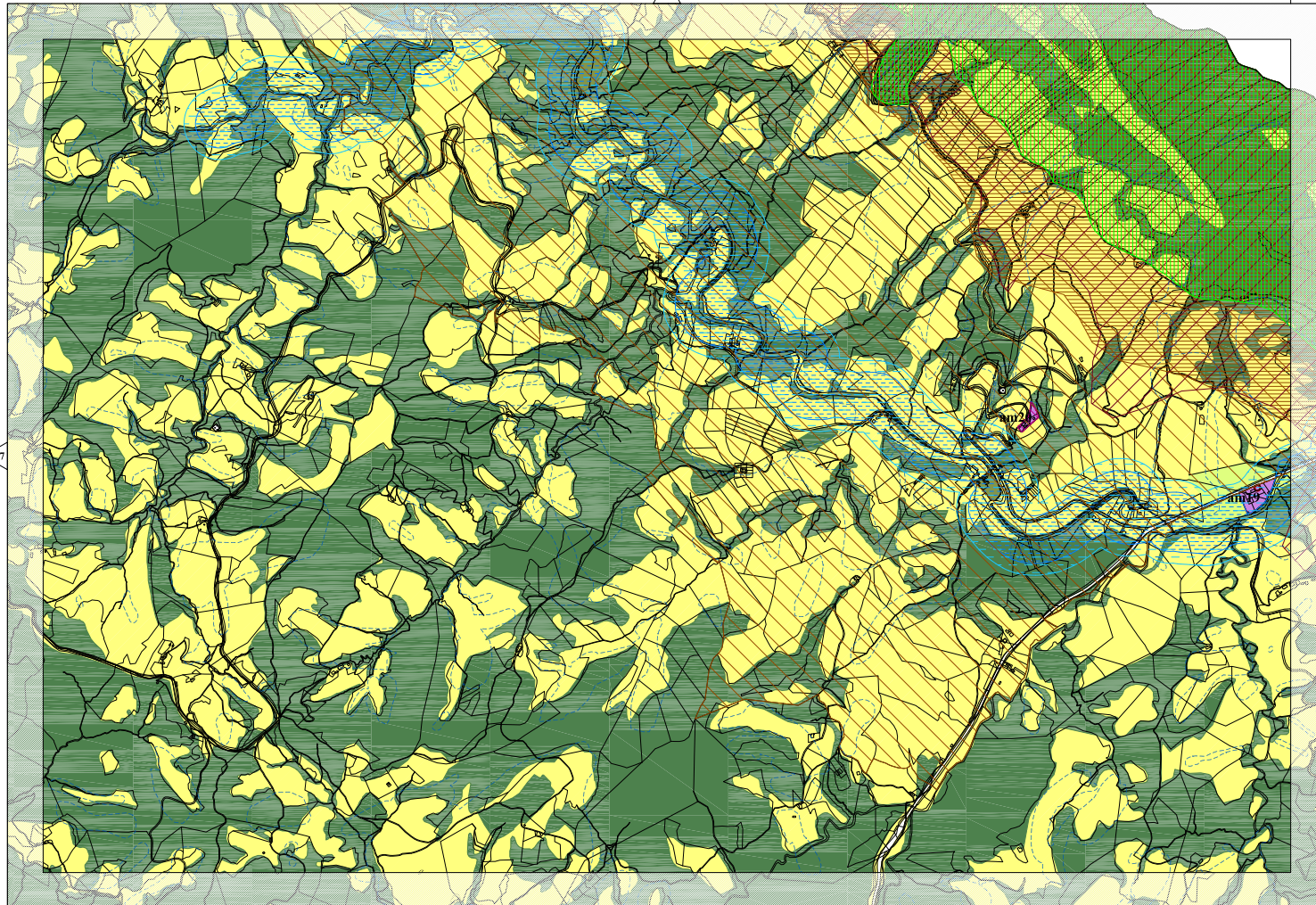
06

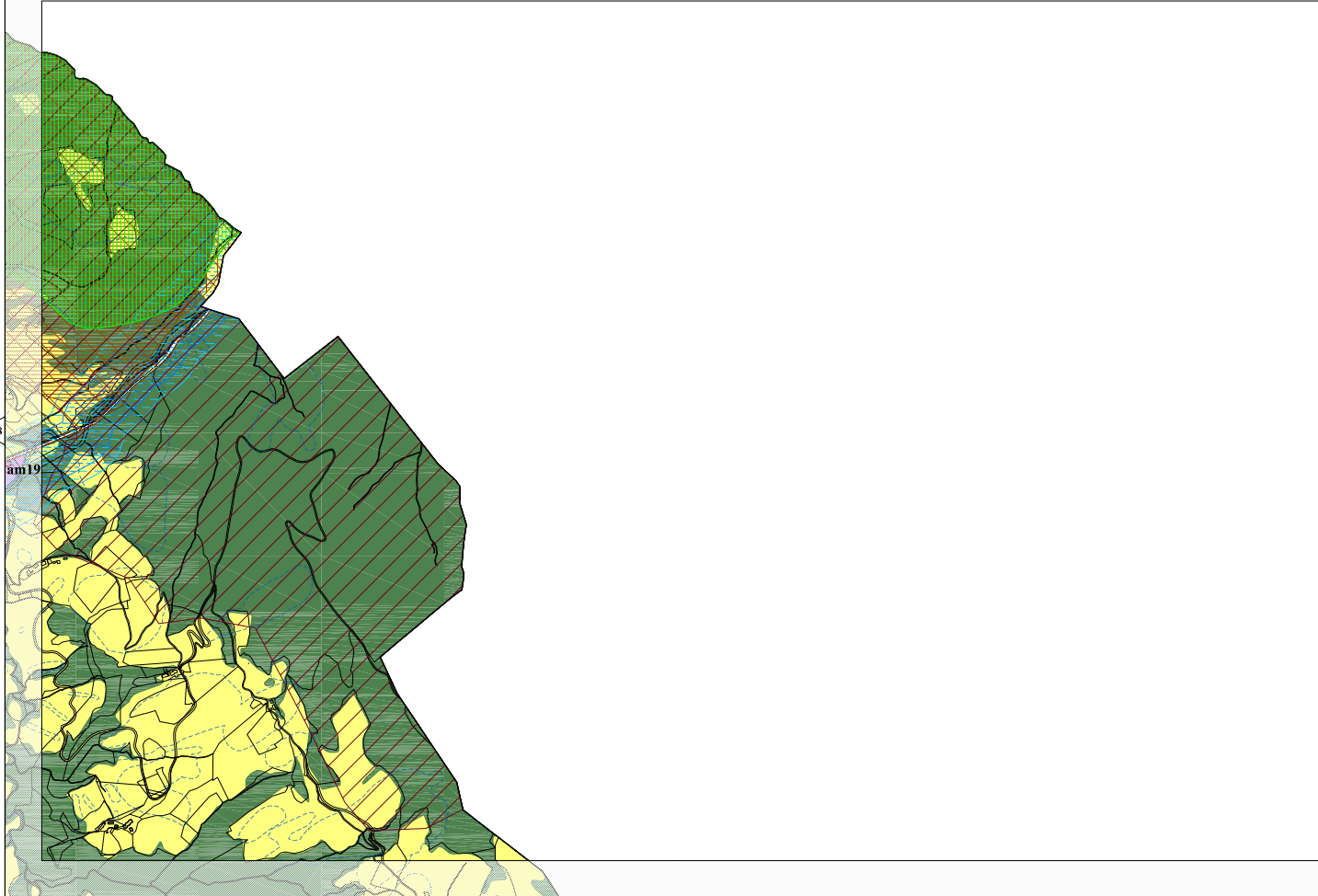


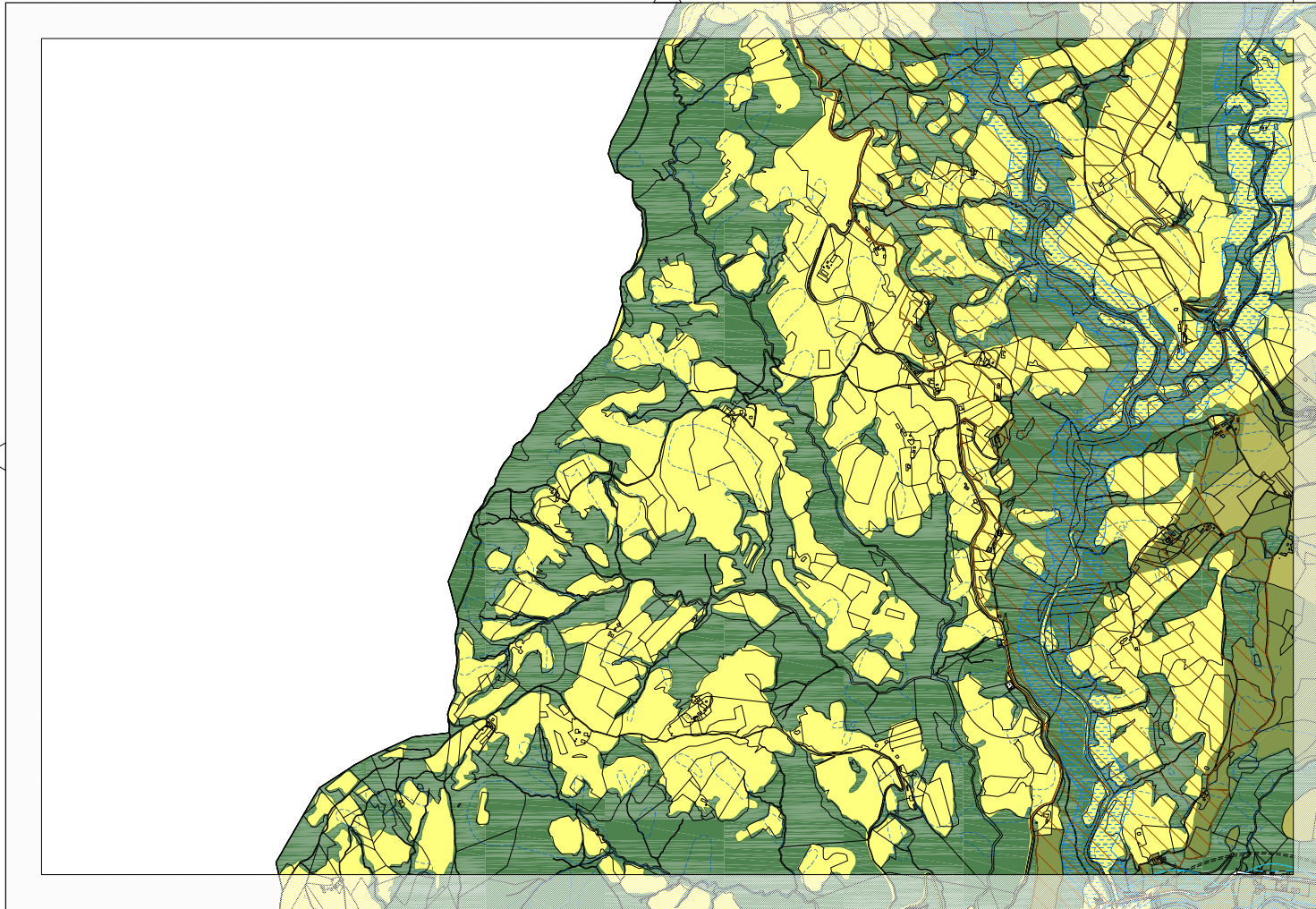


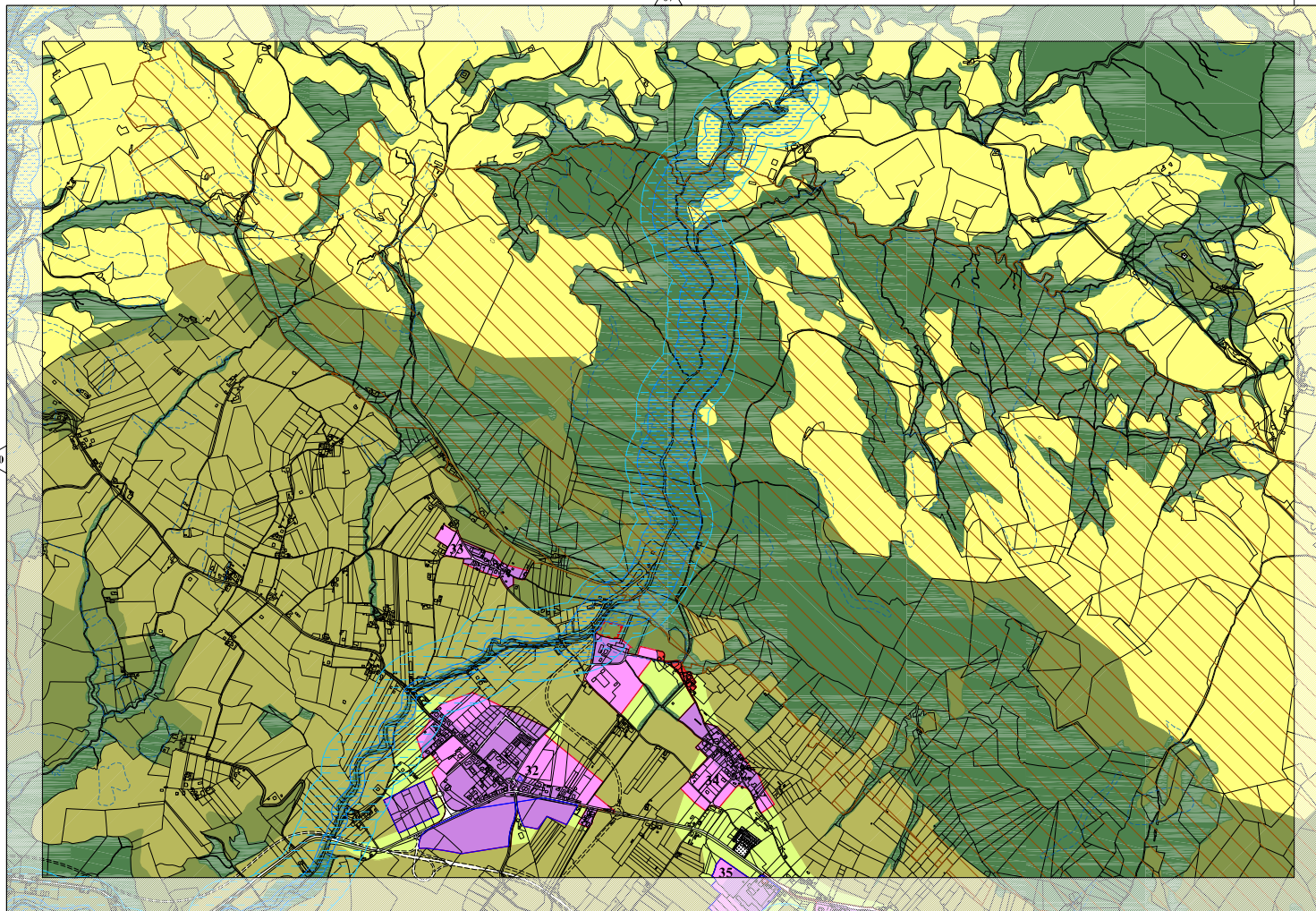


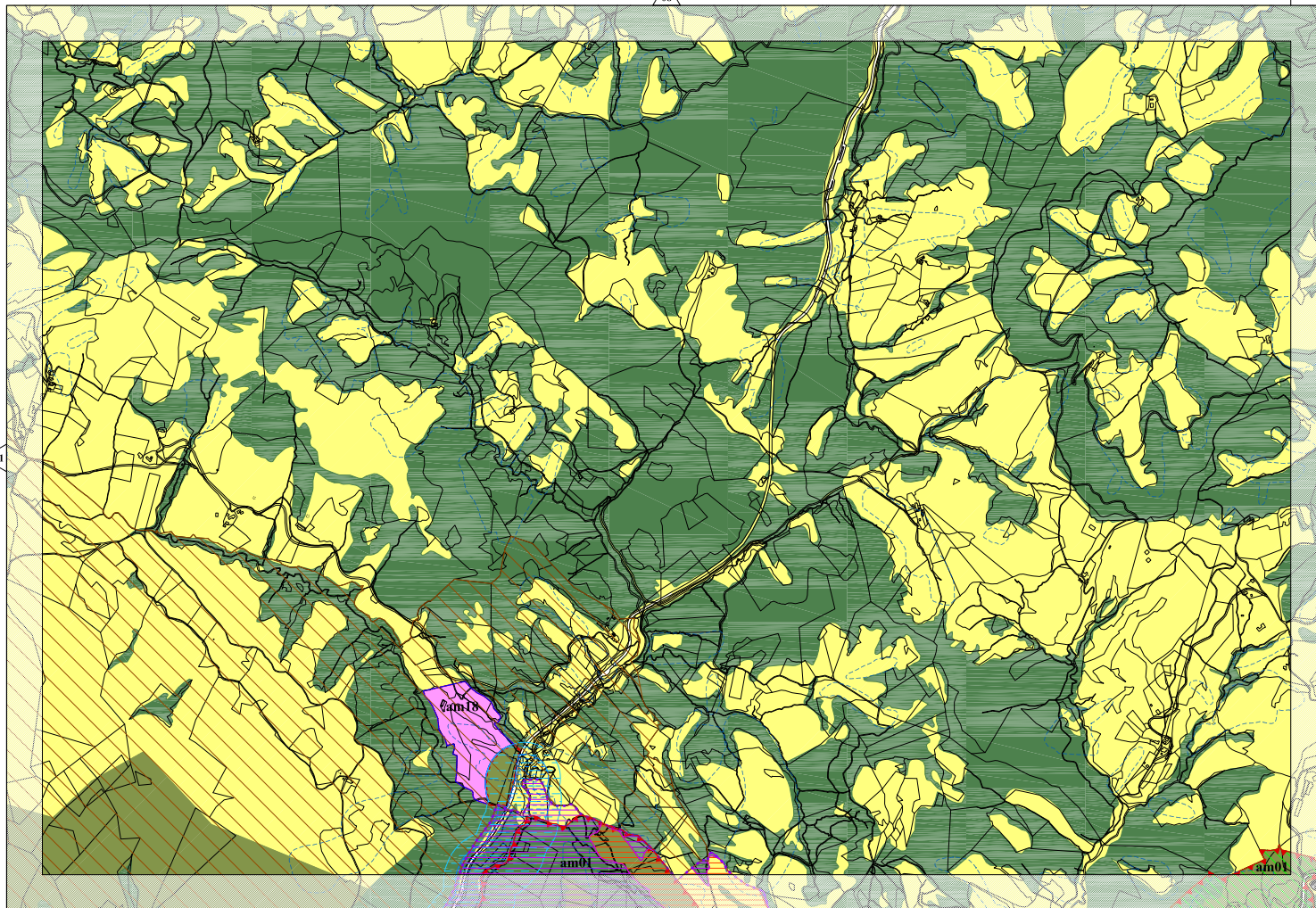


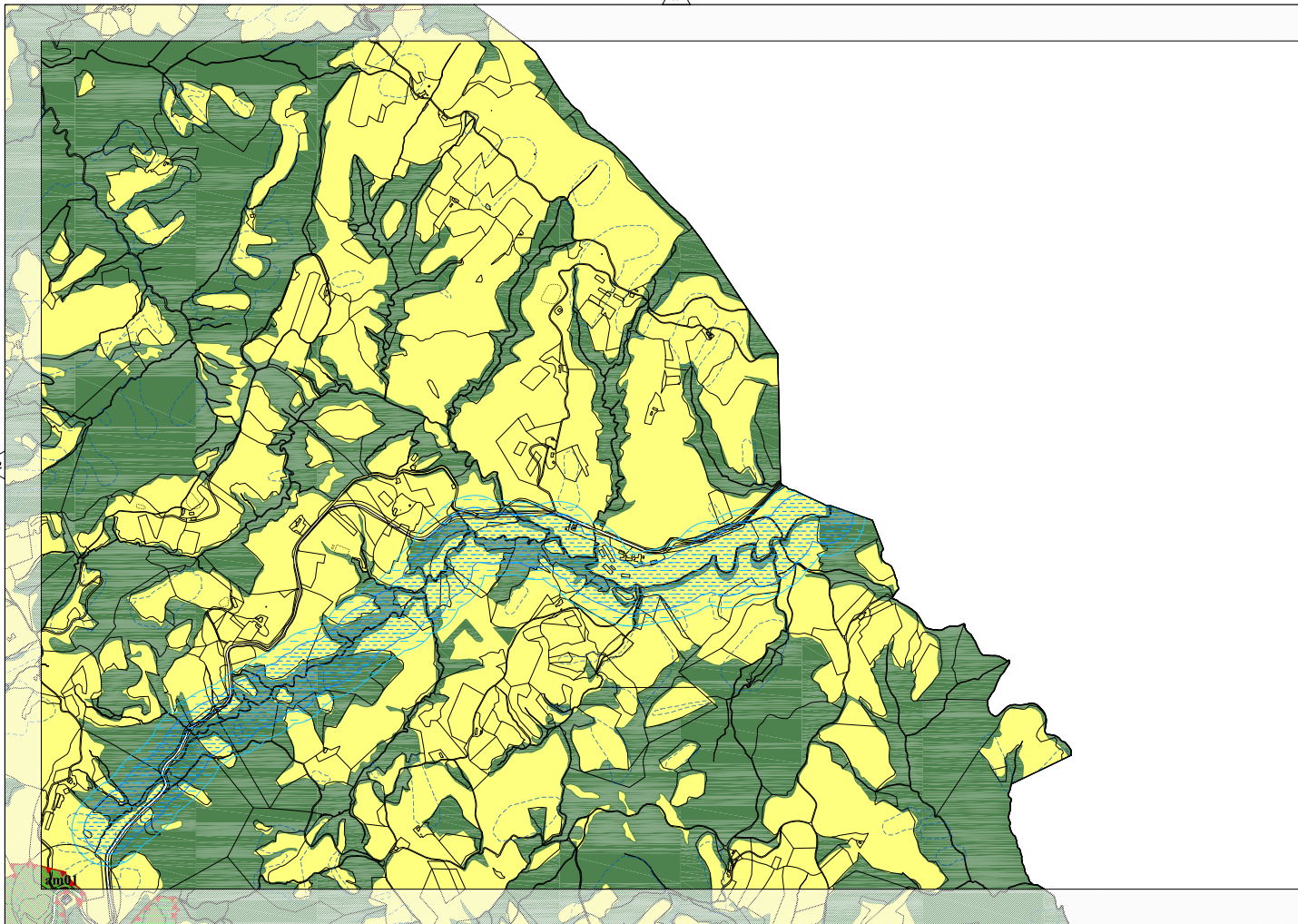




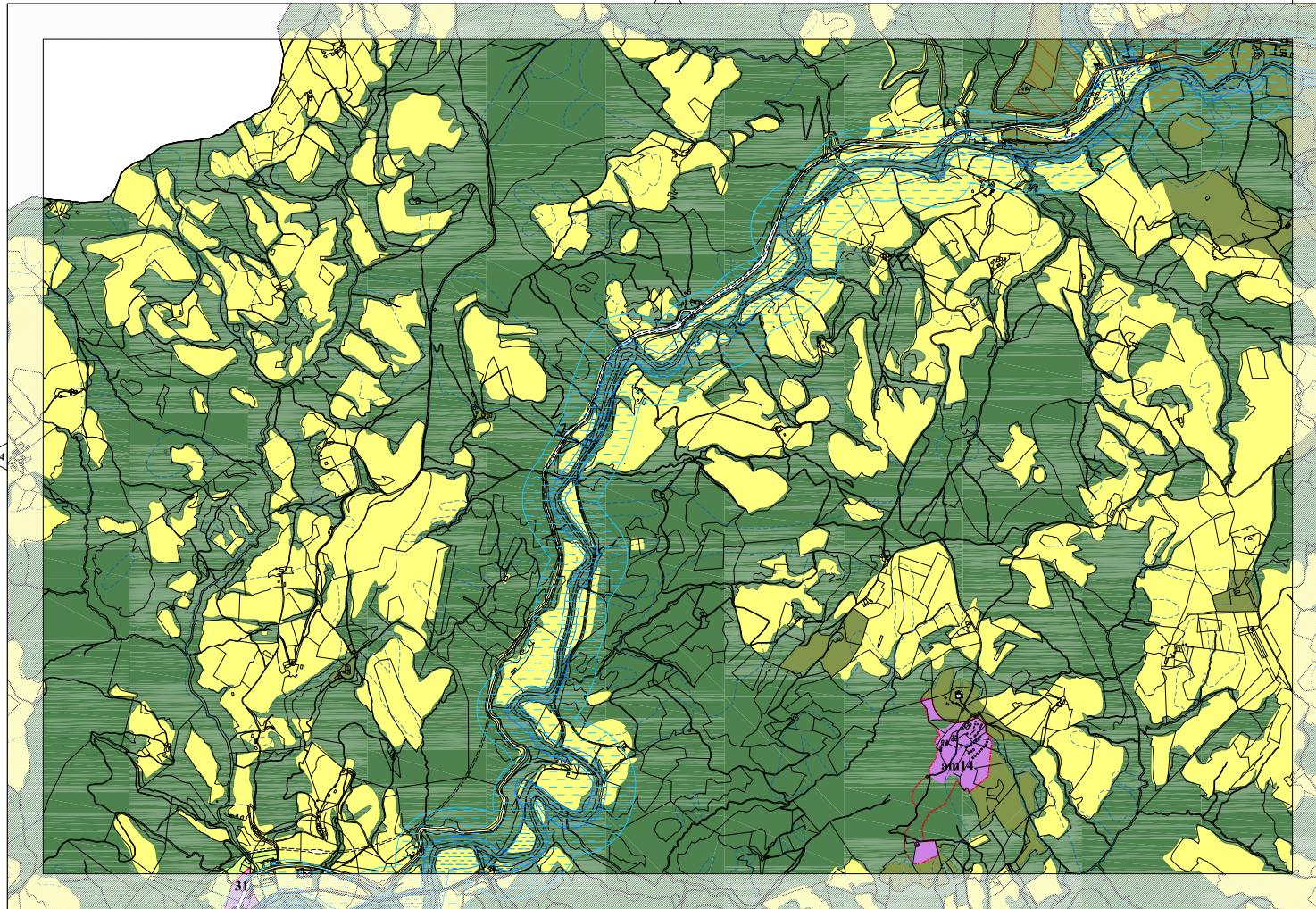


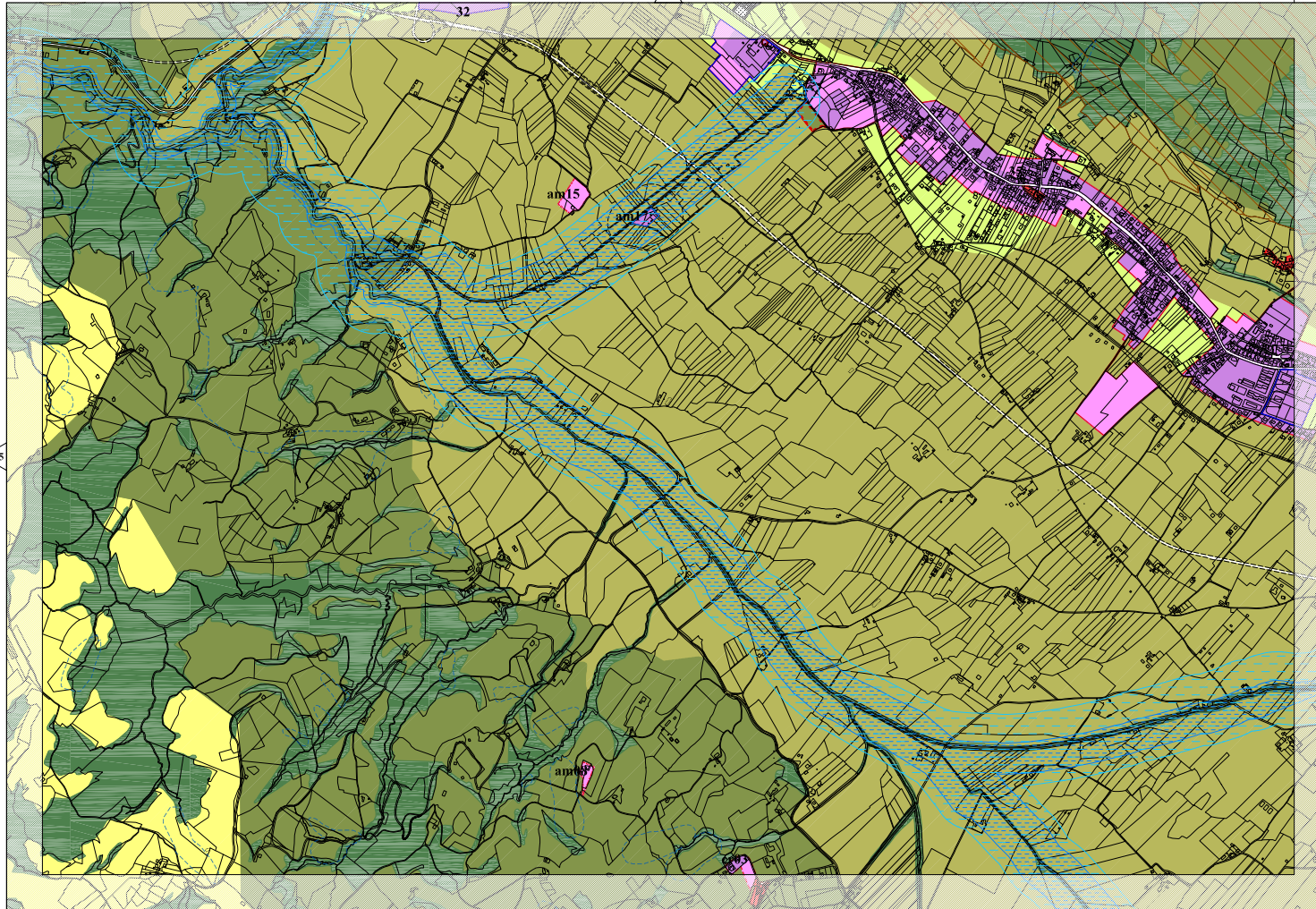


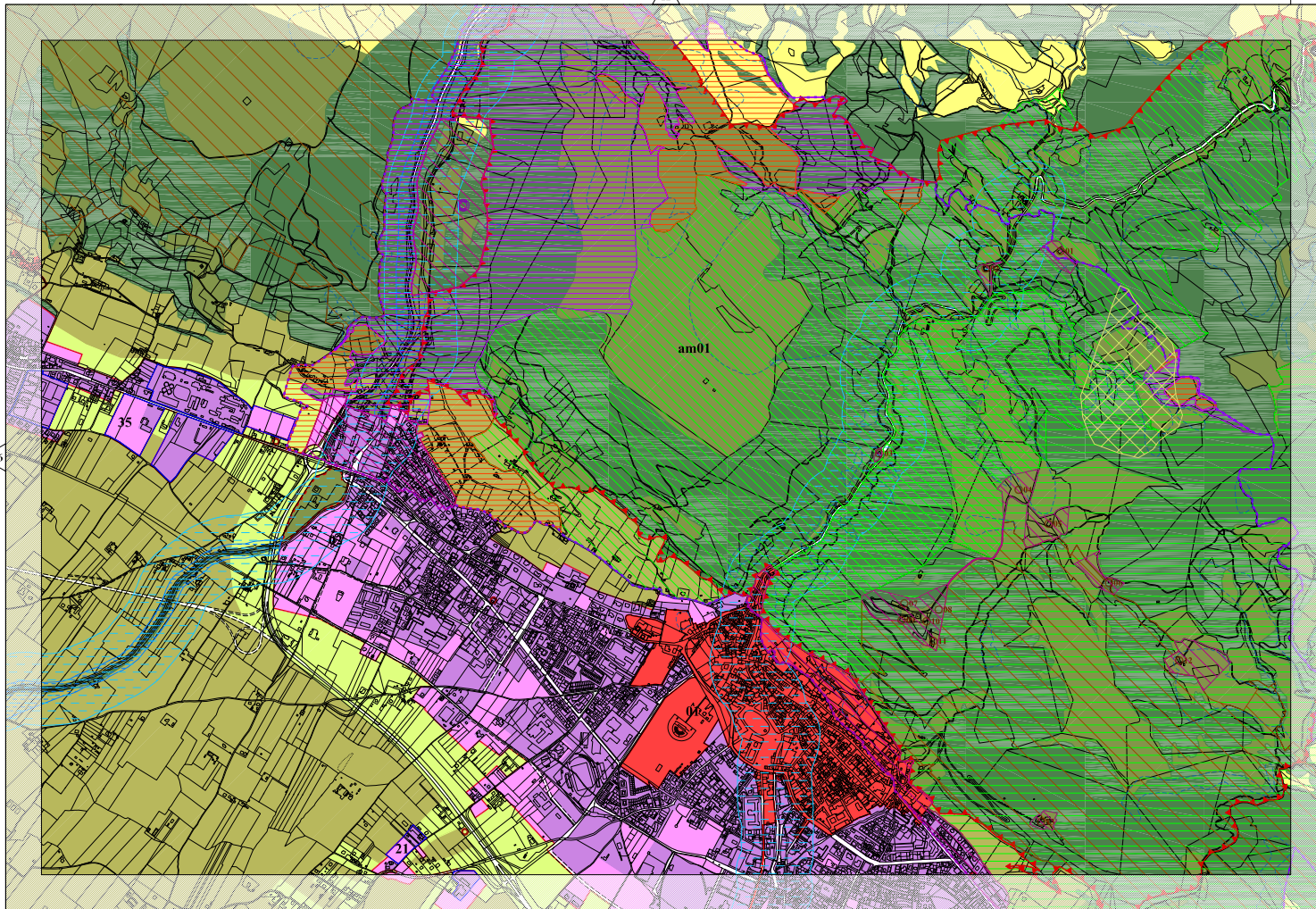


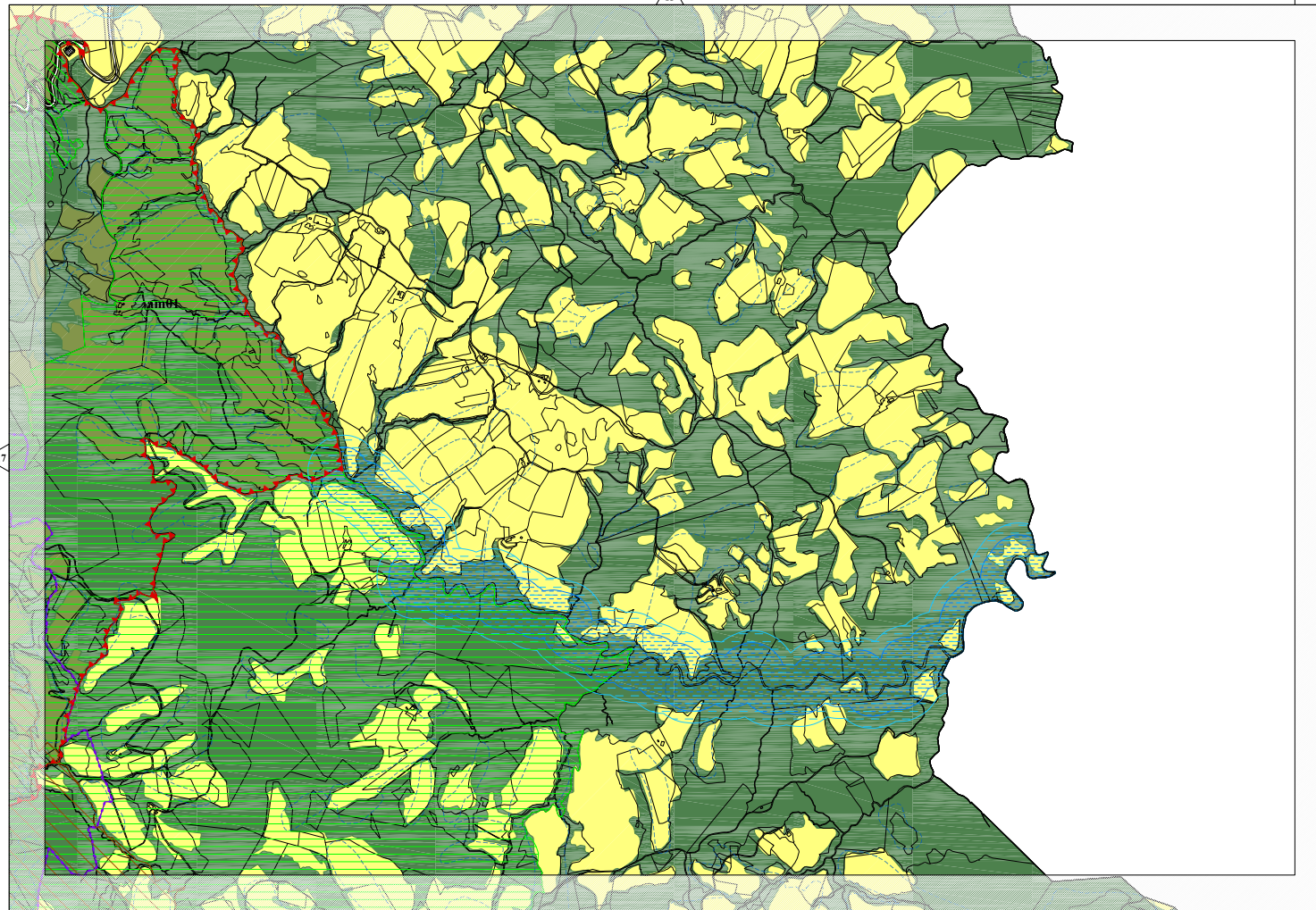


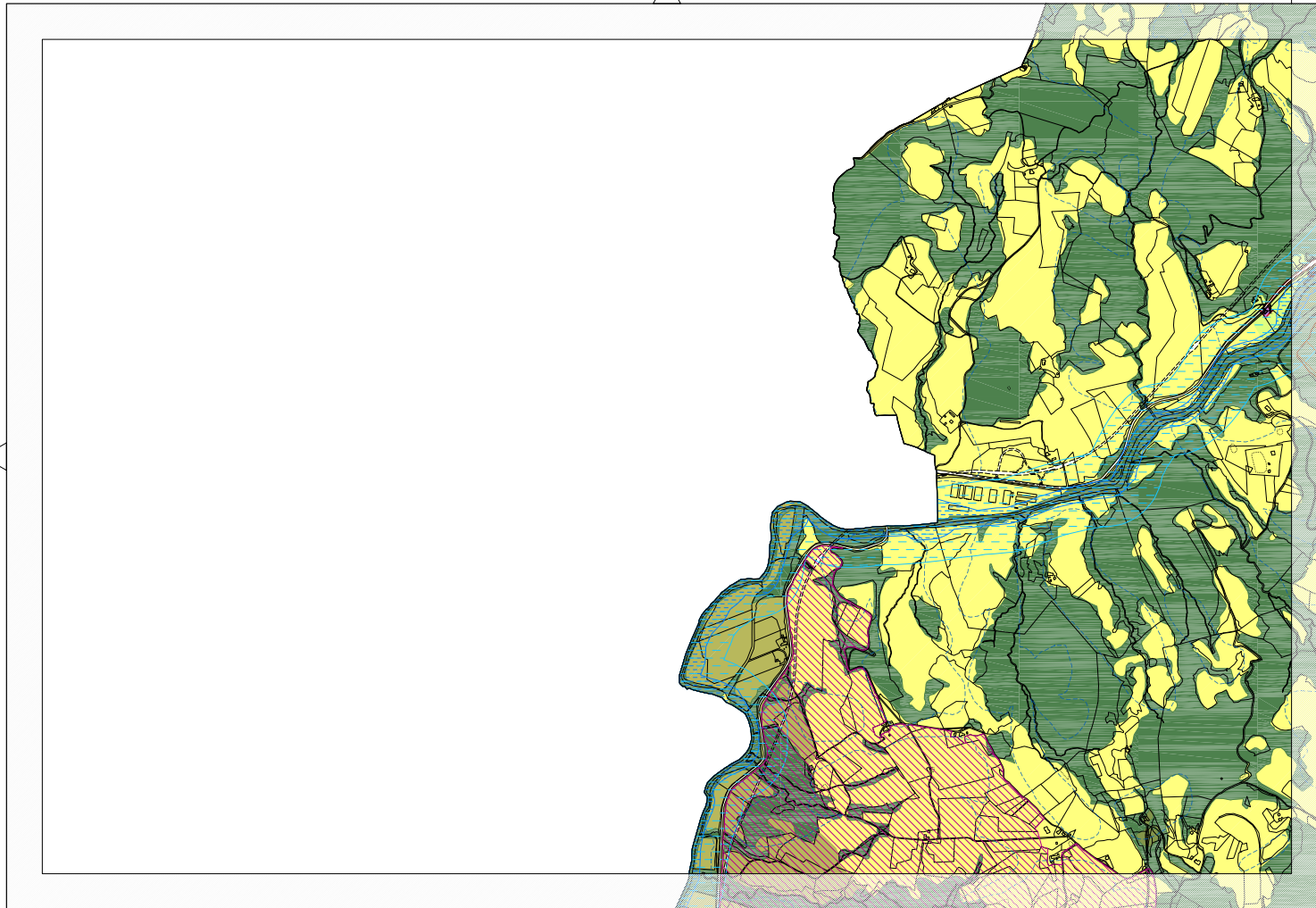


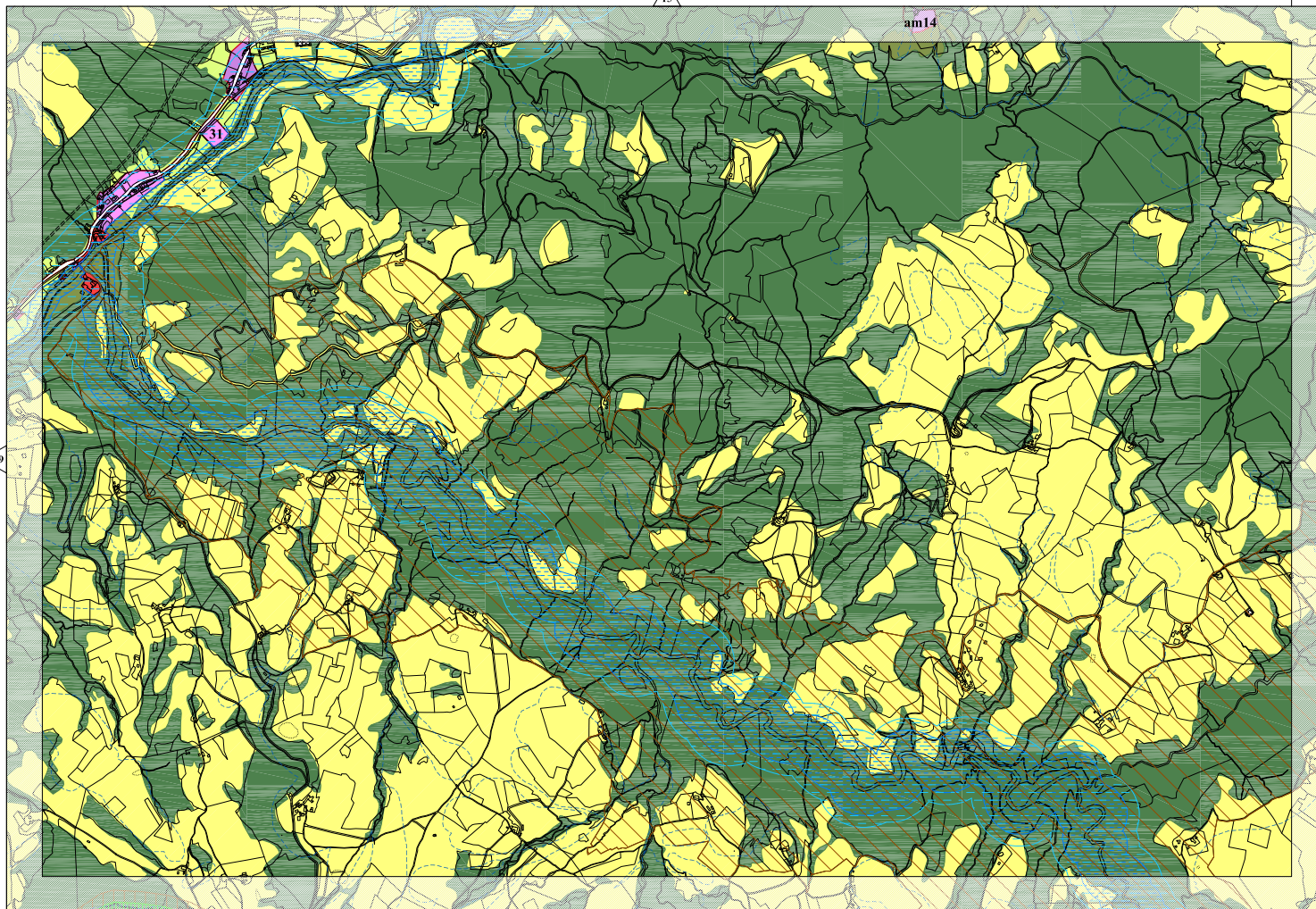


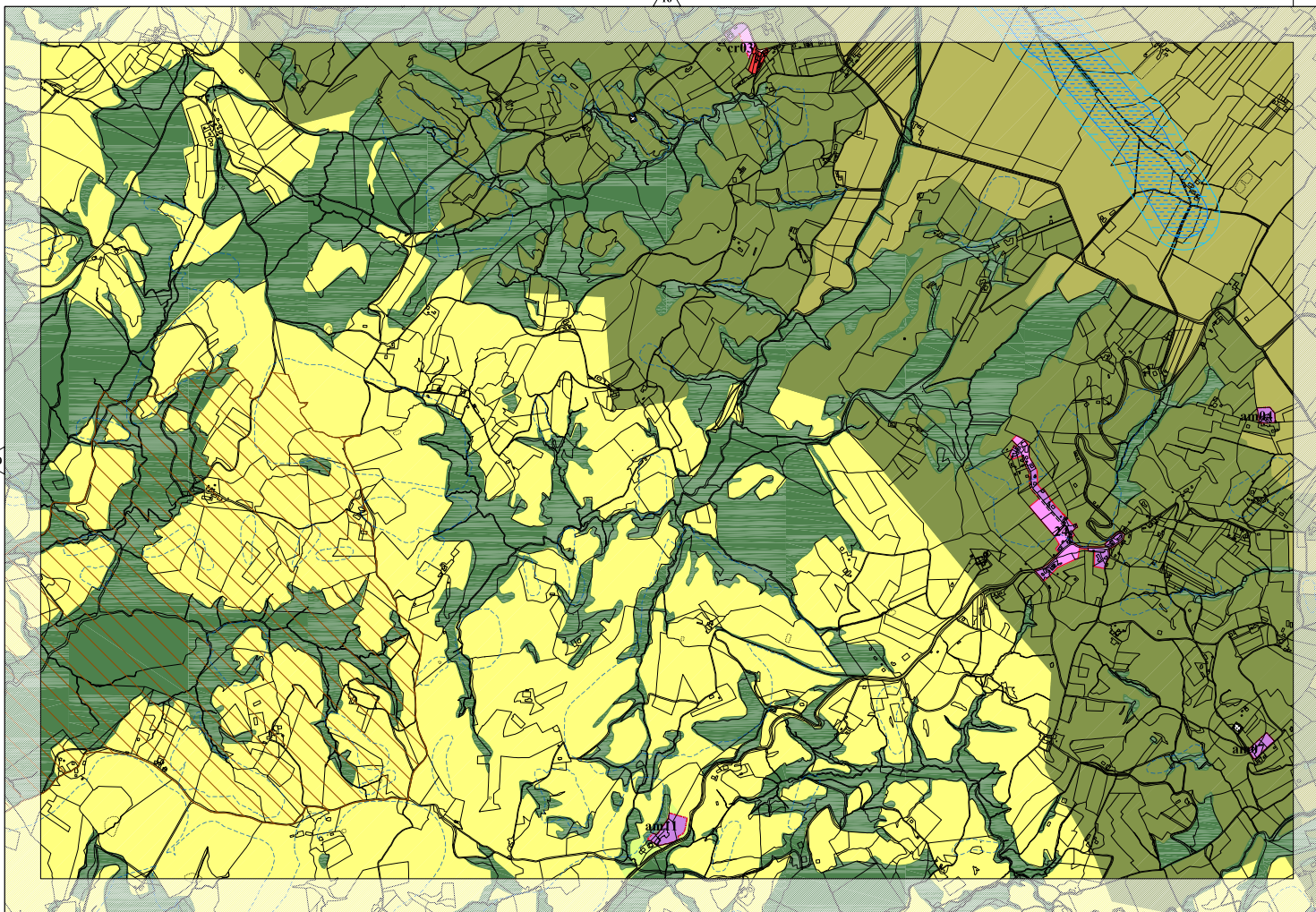


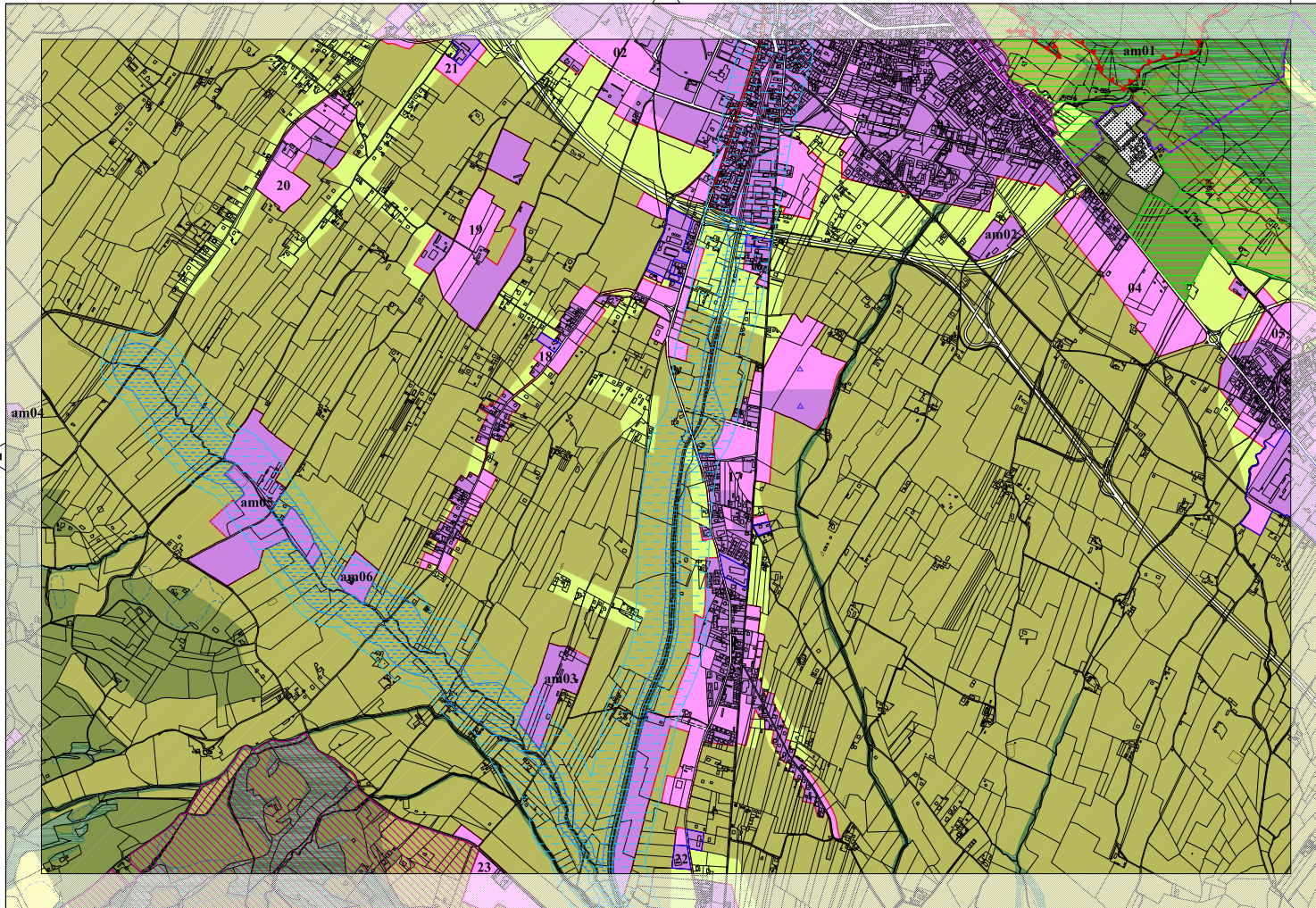


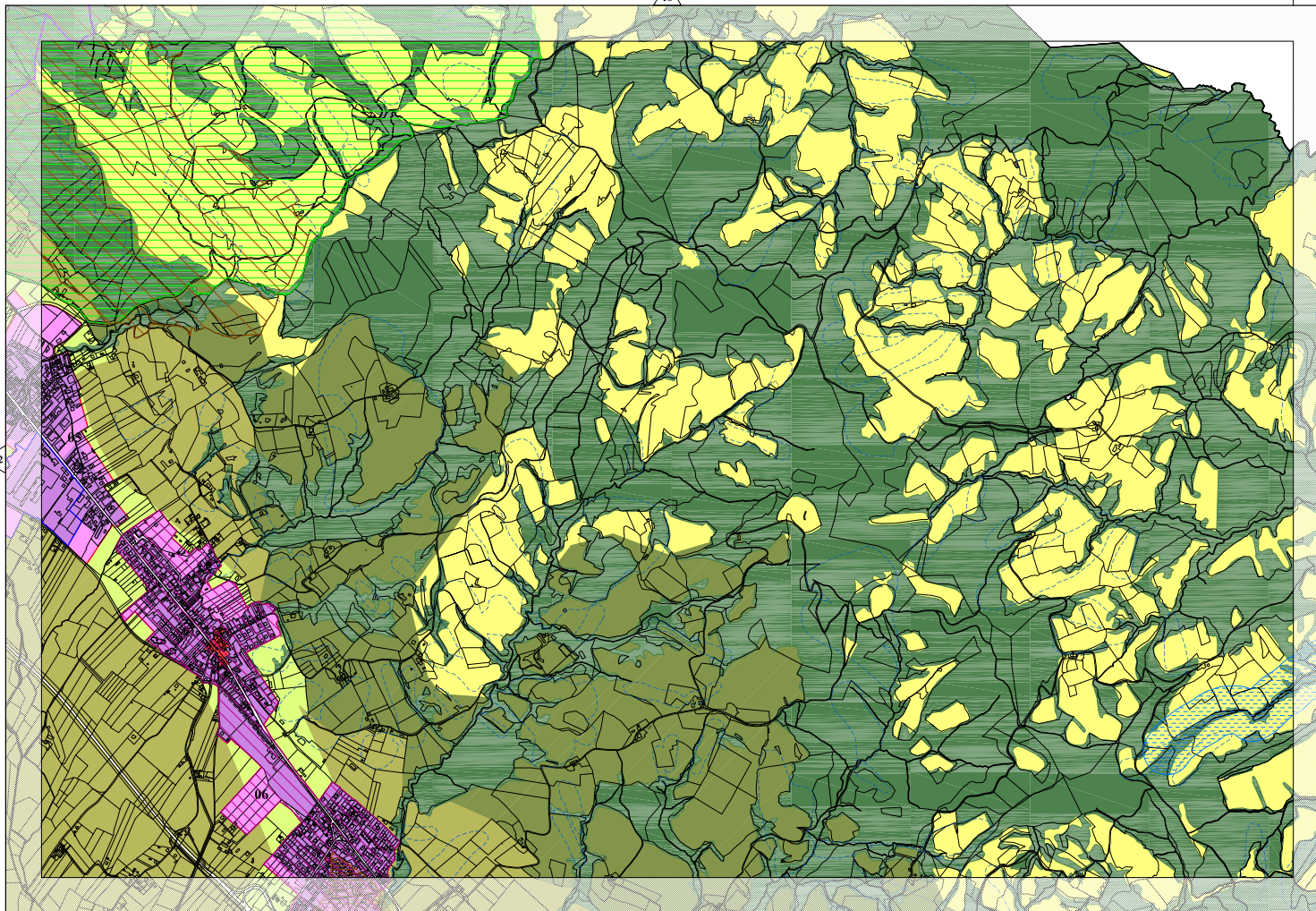


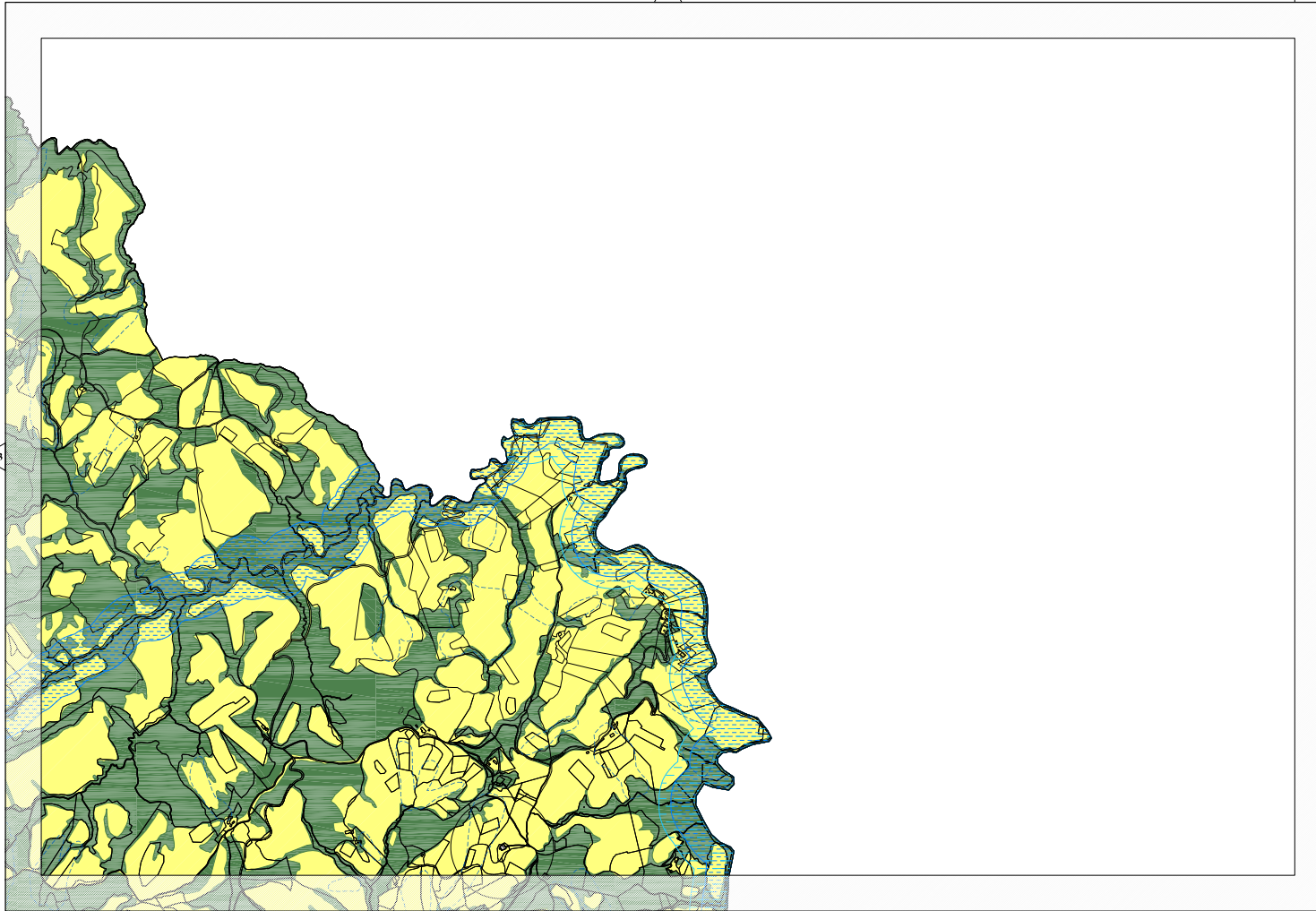


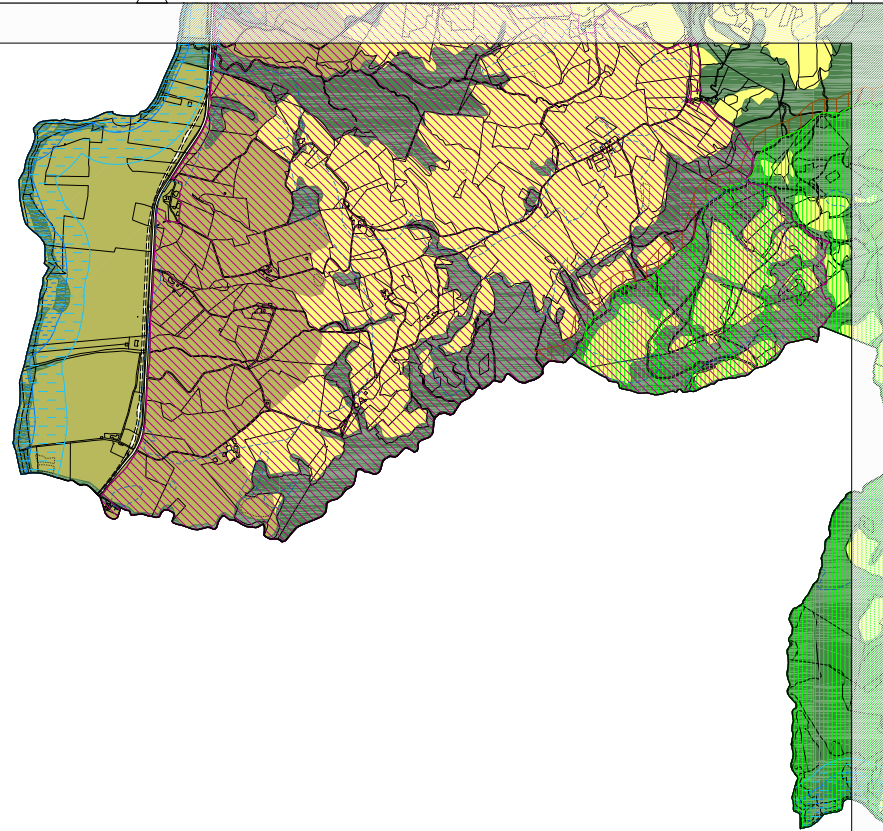


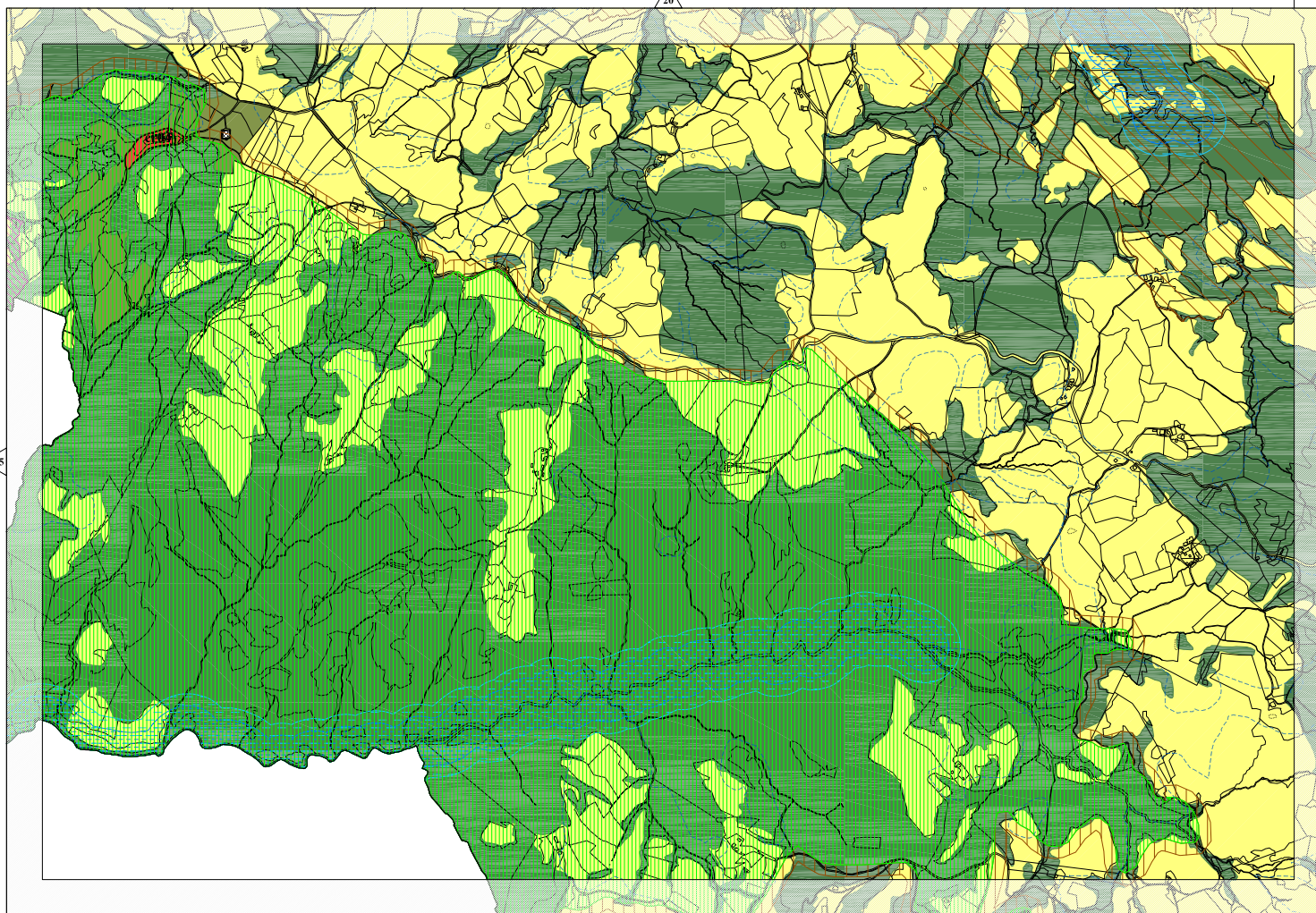


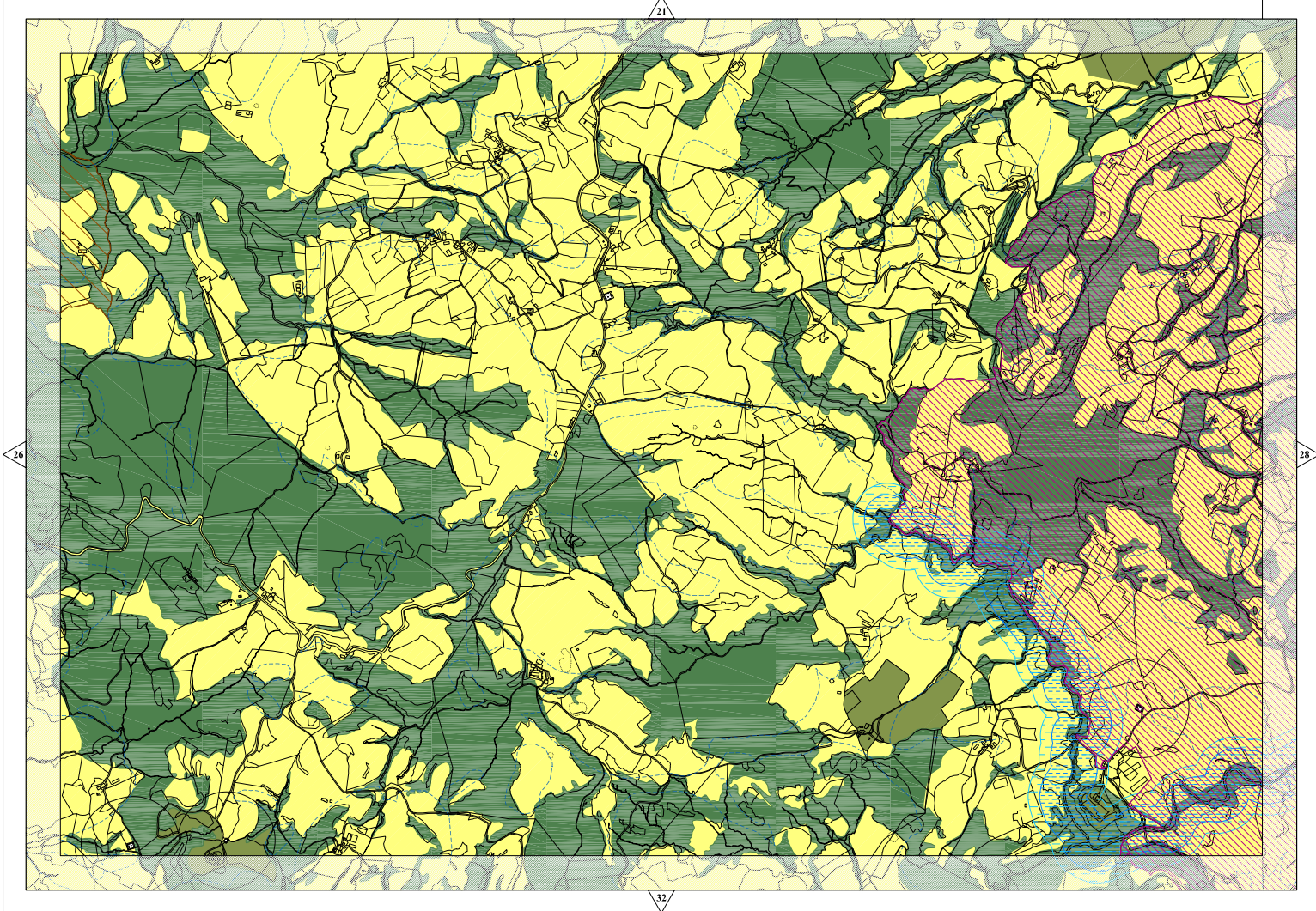


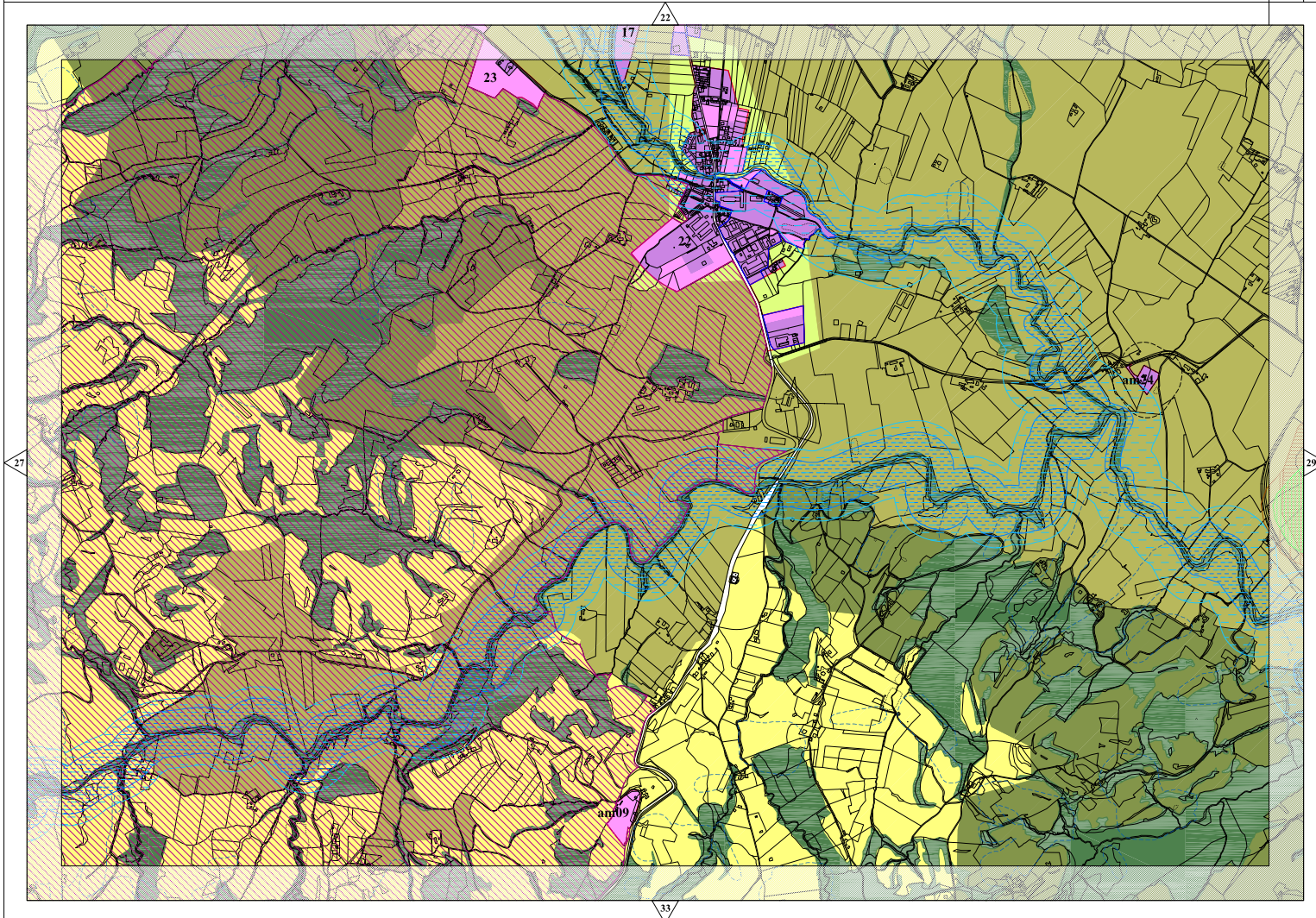


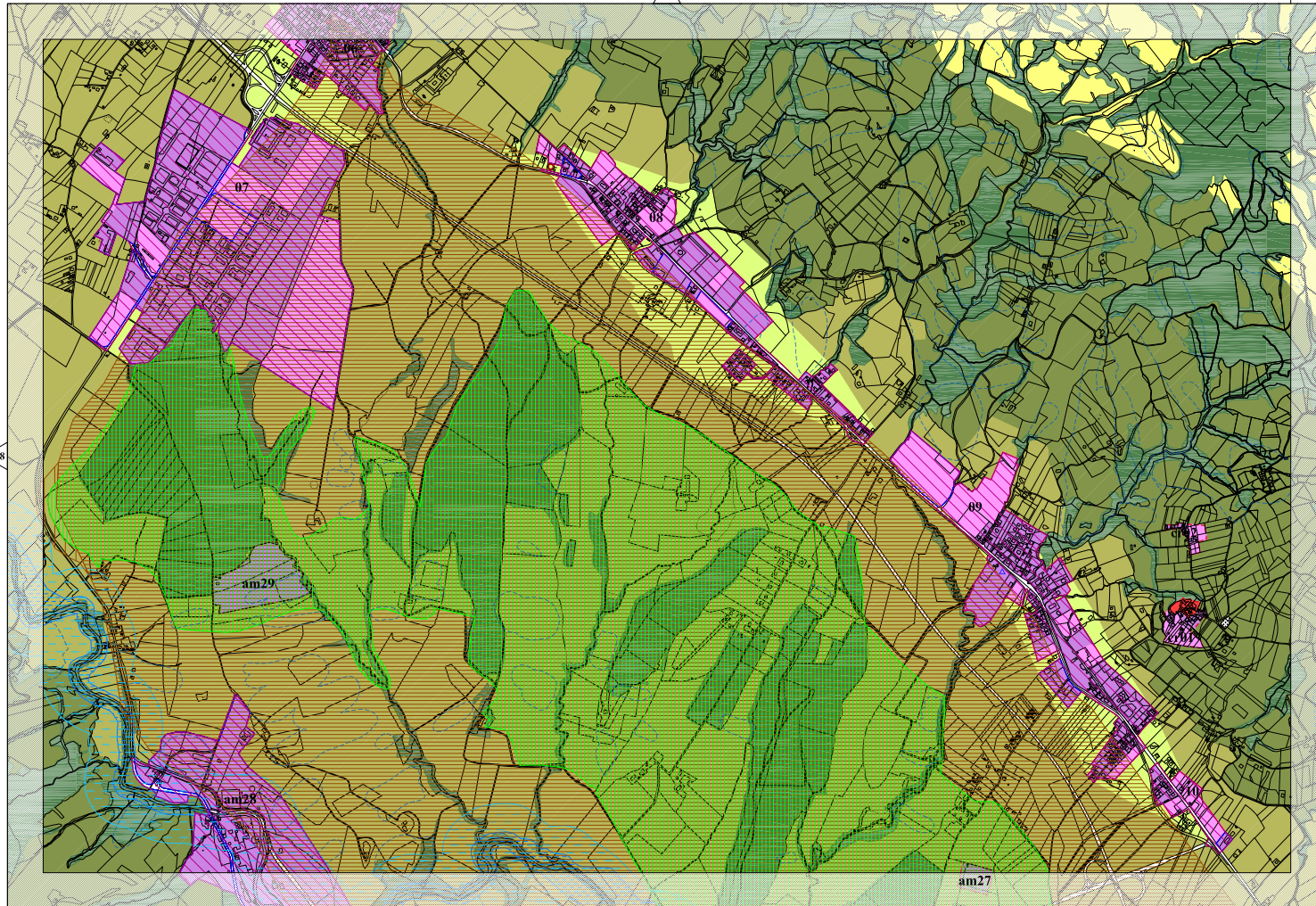


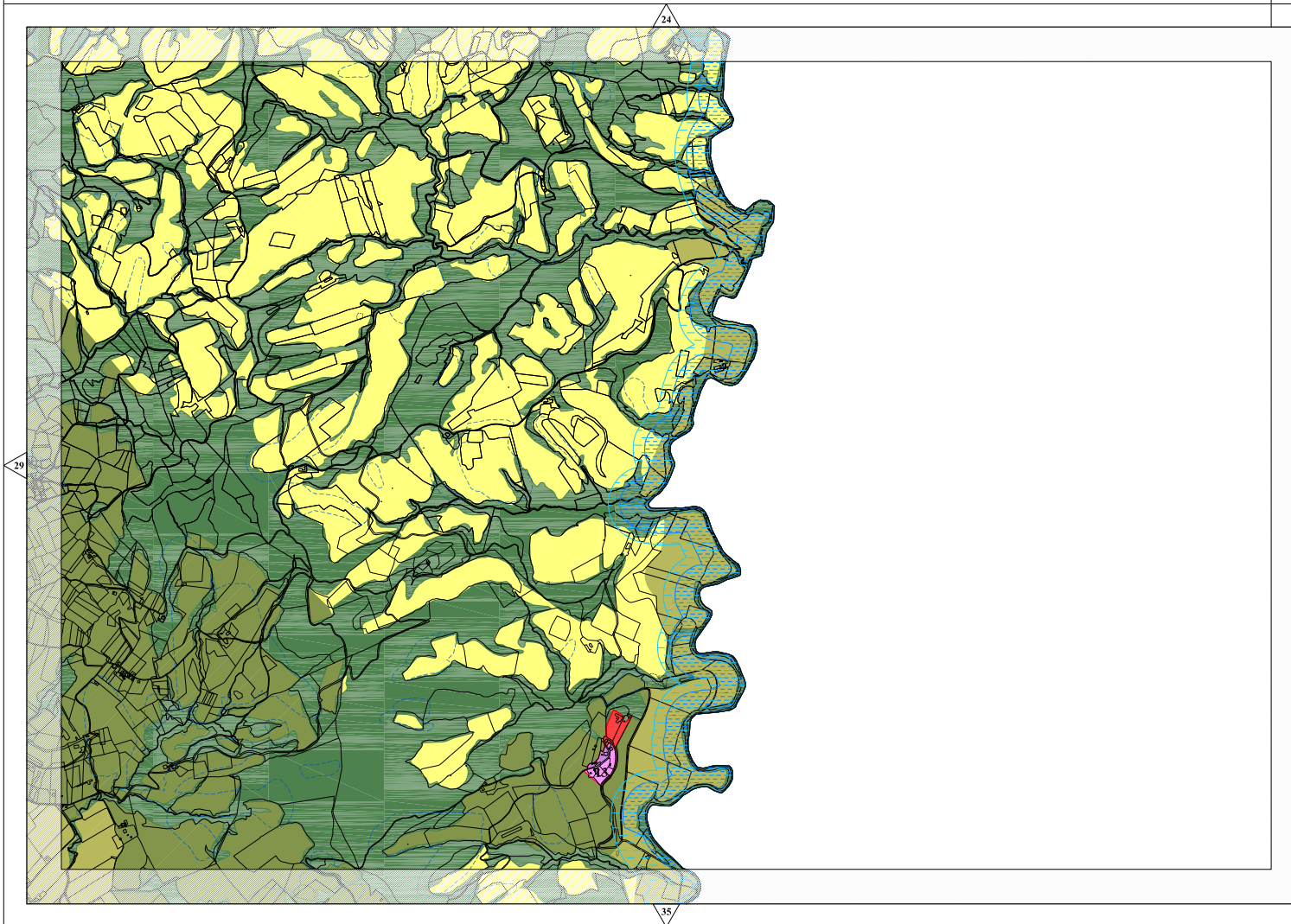


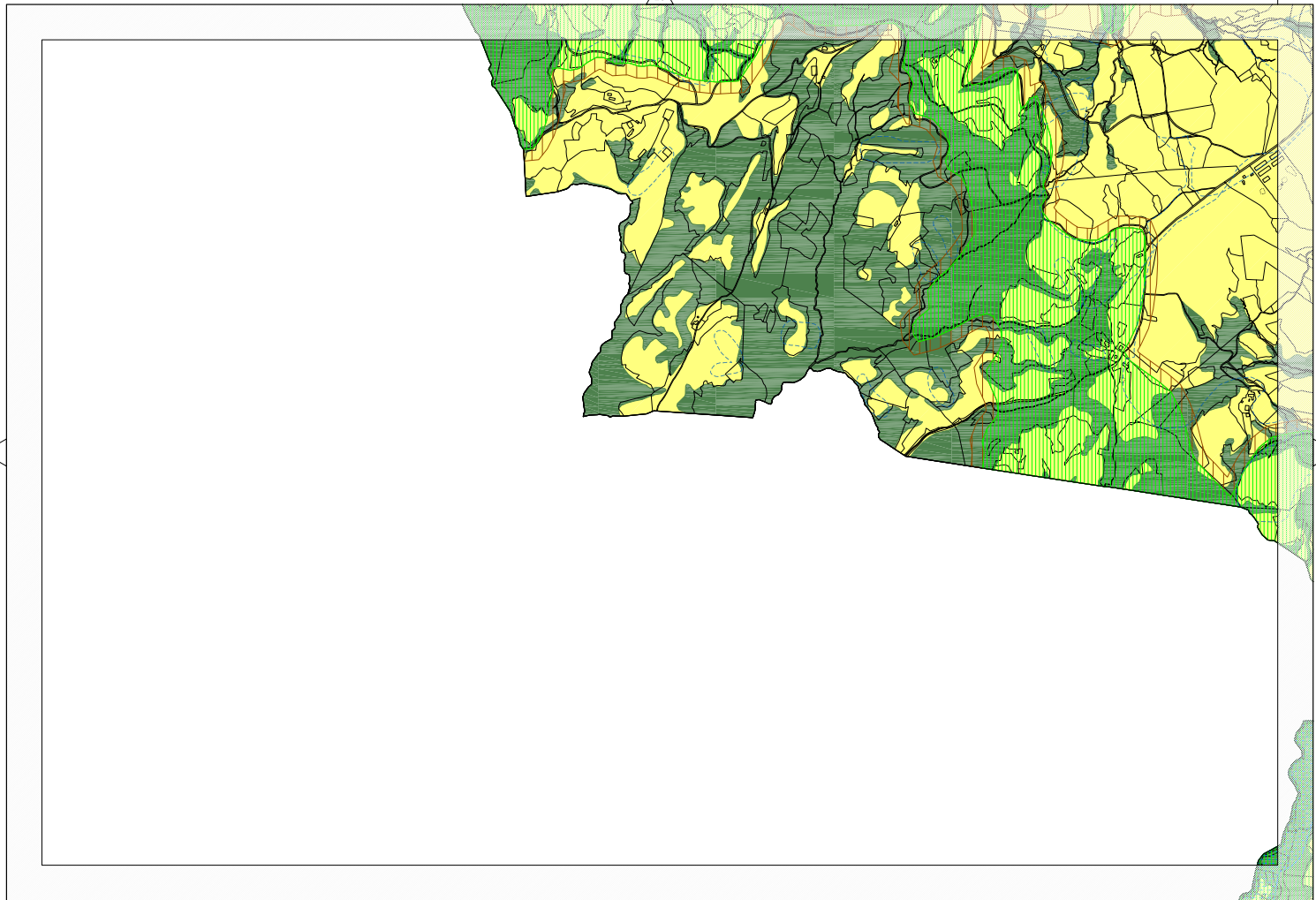


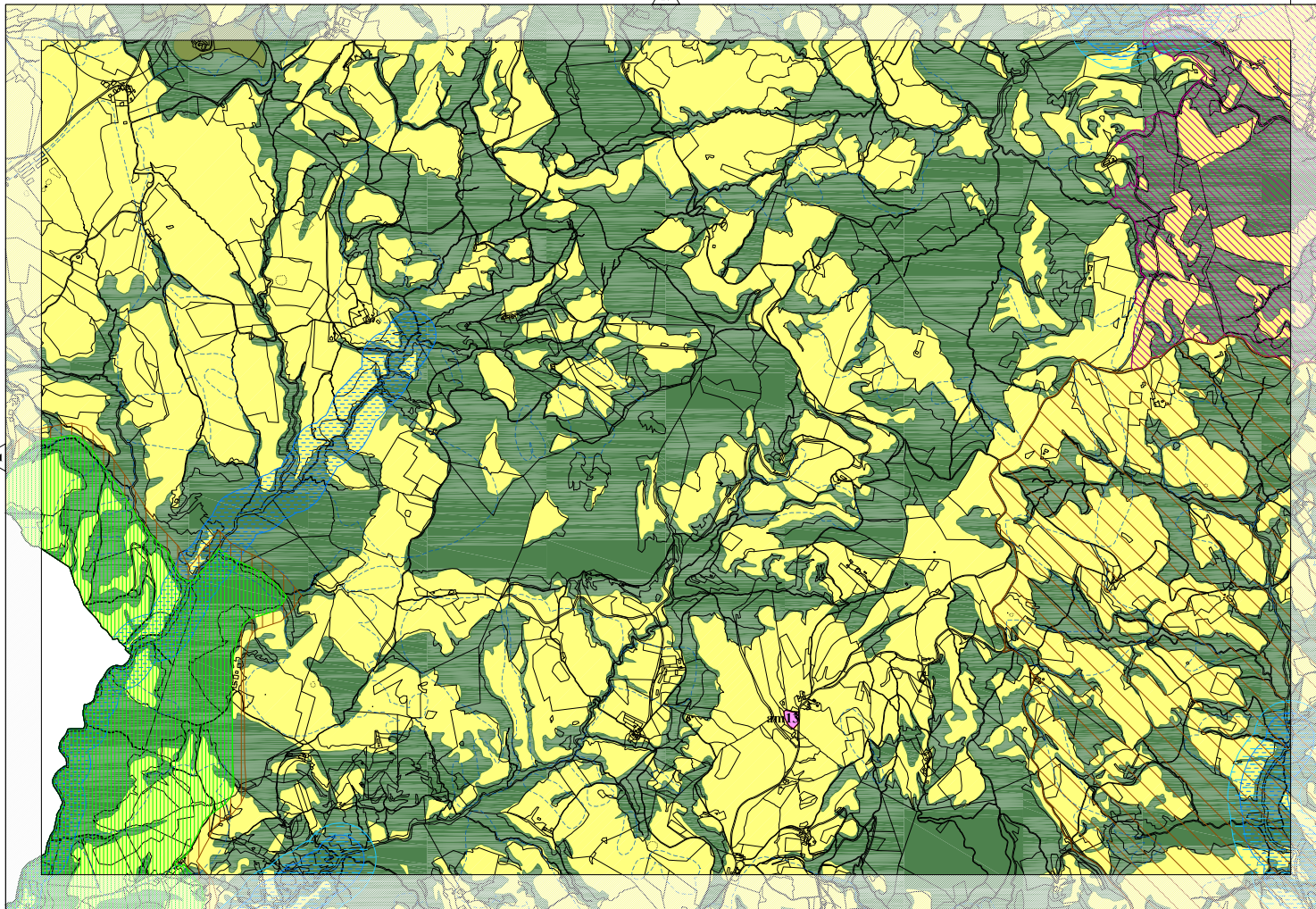


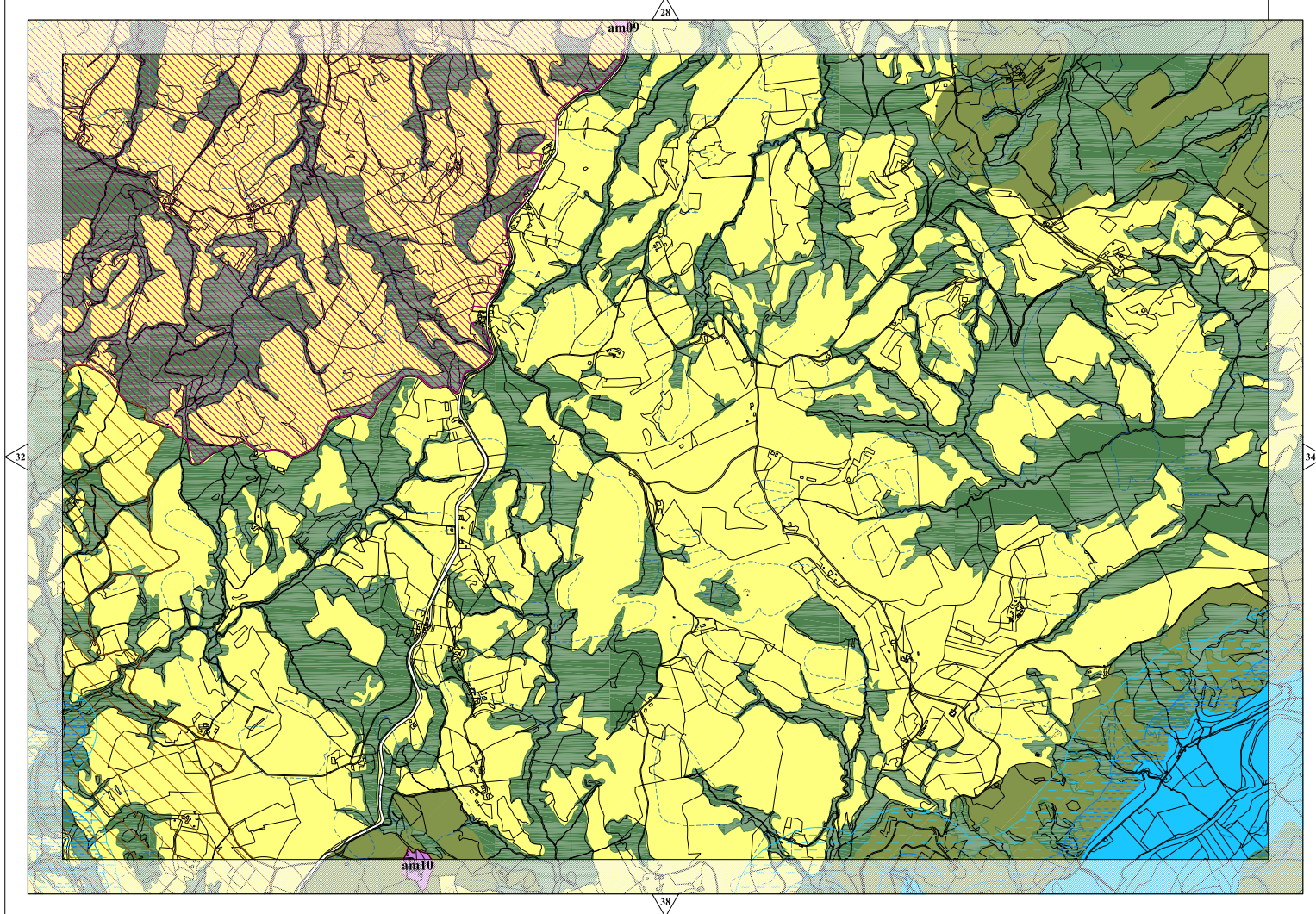


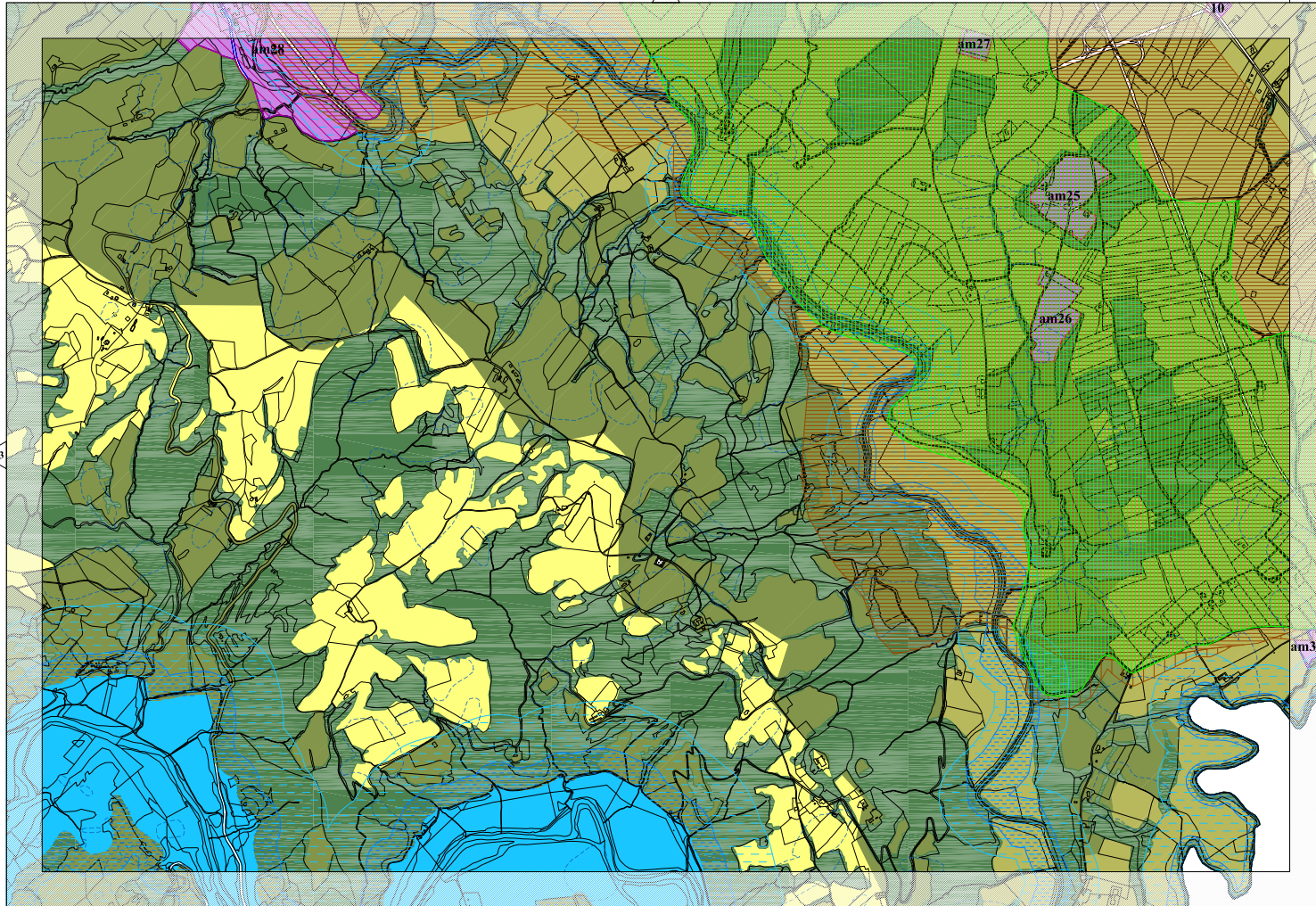


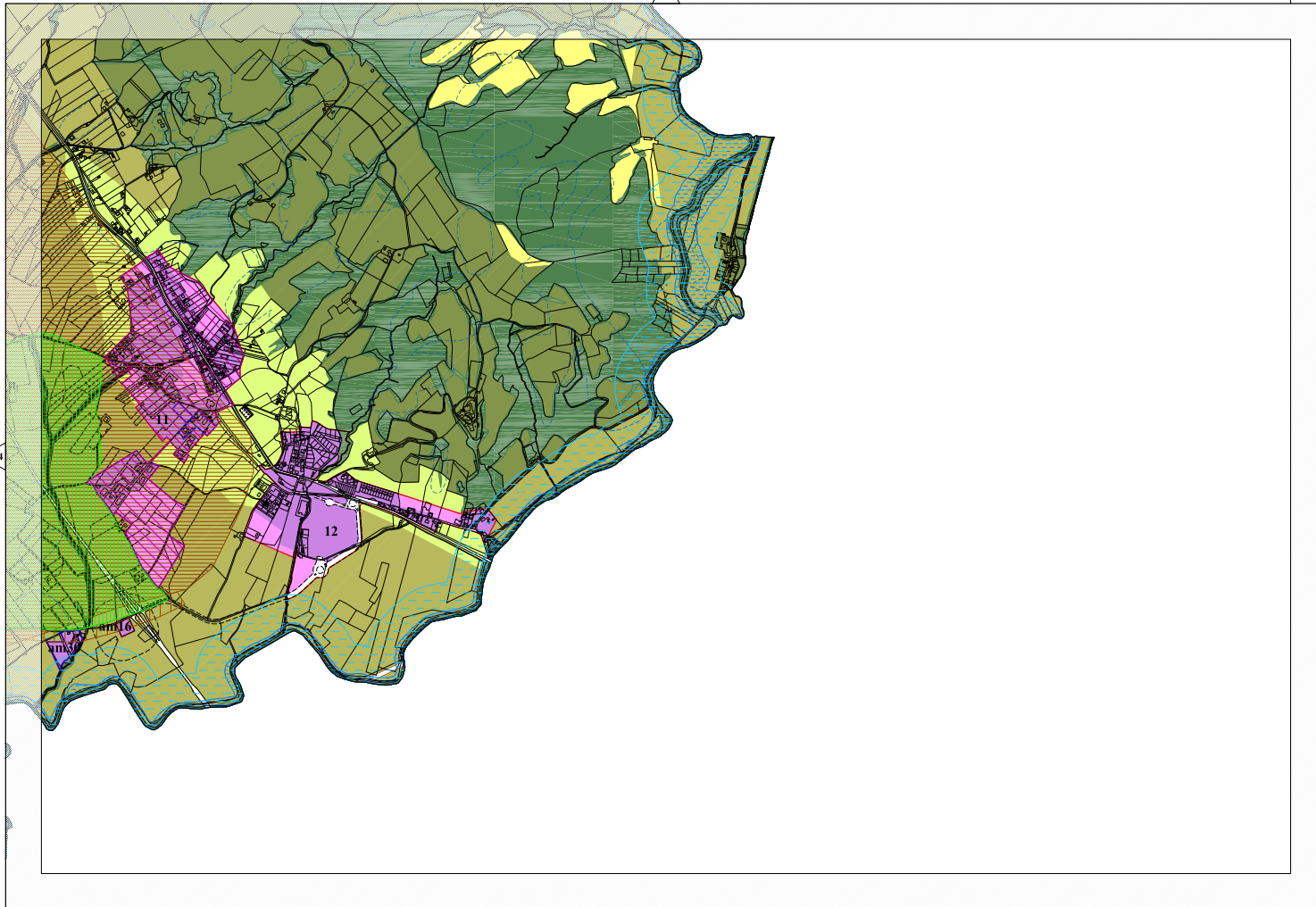




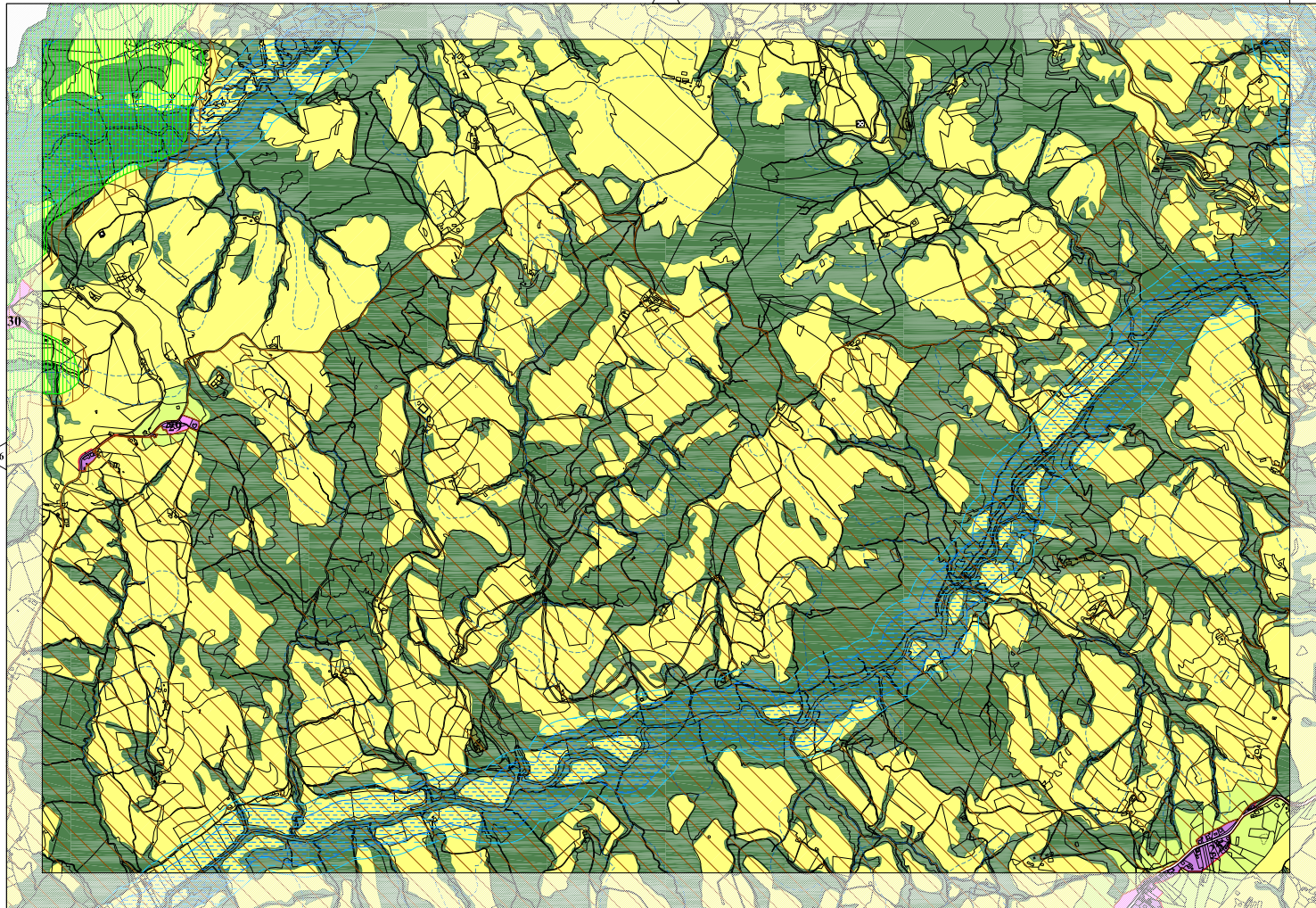


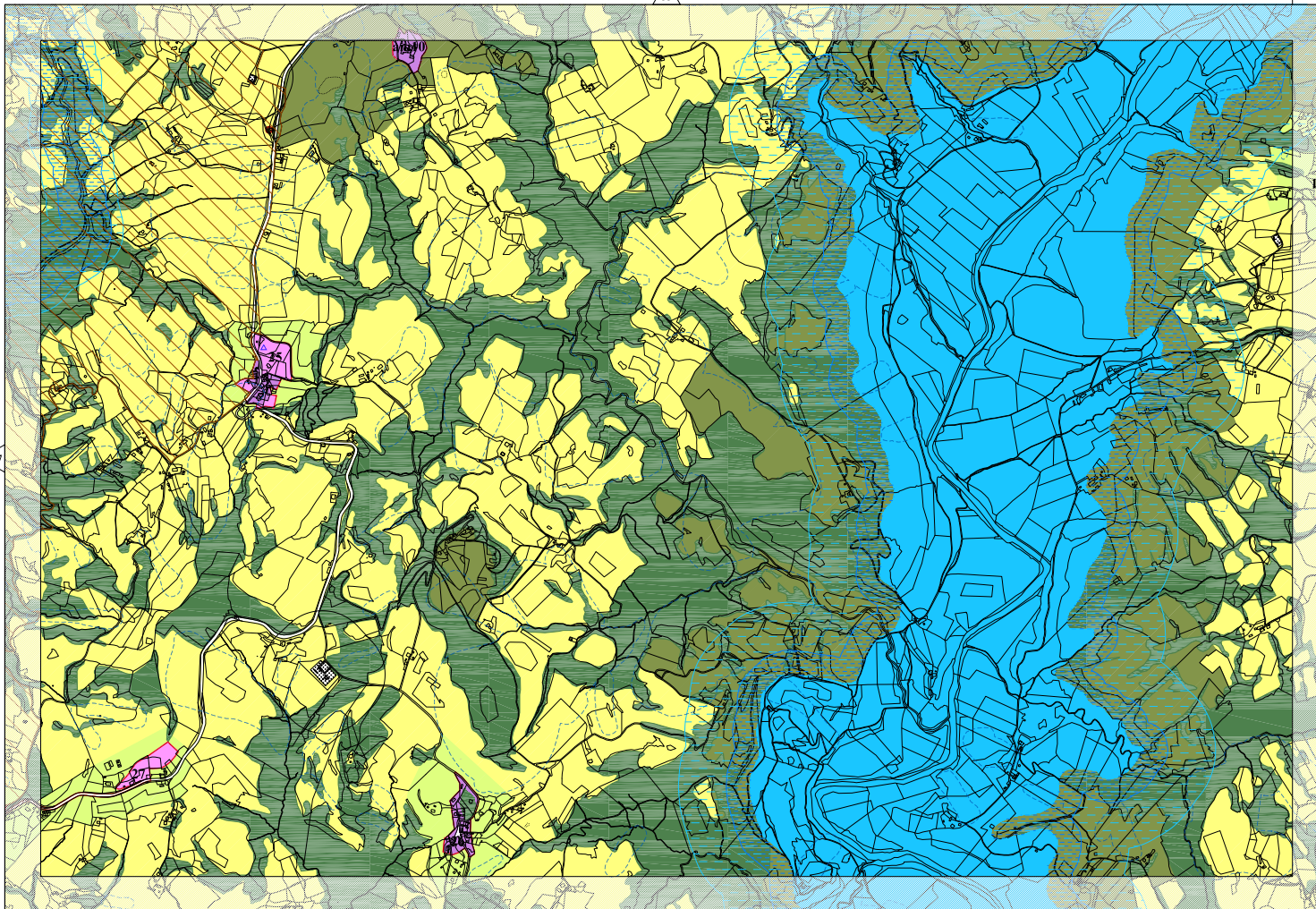


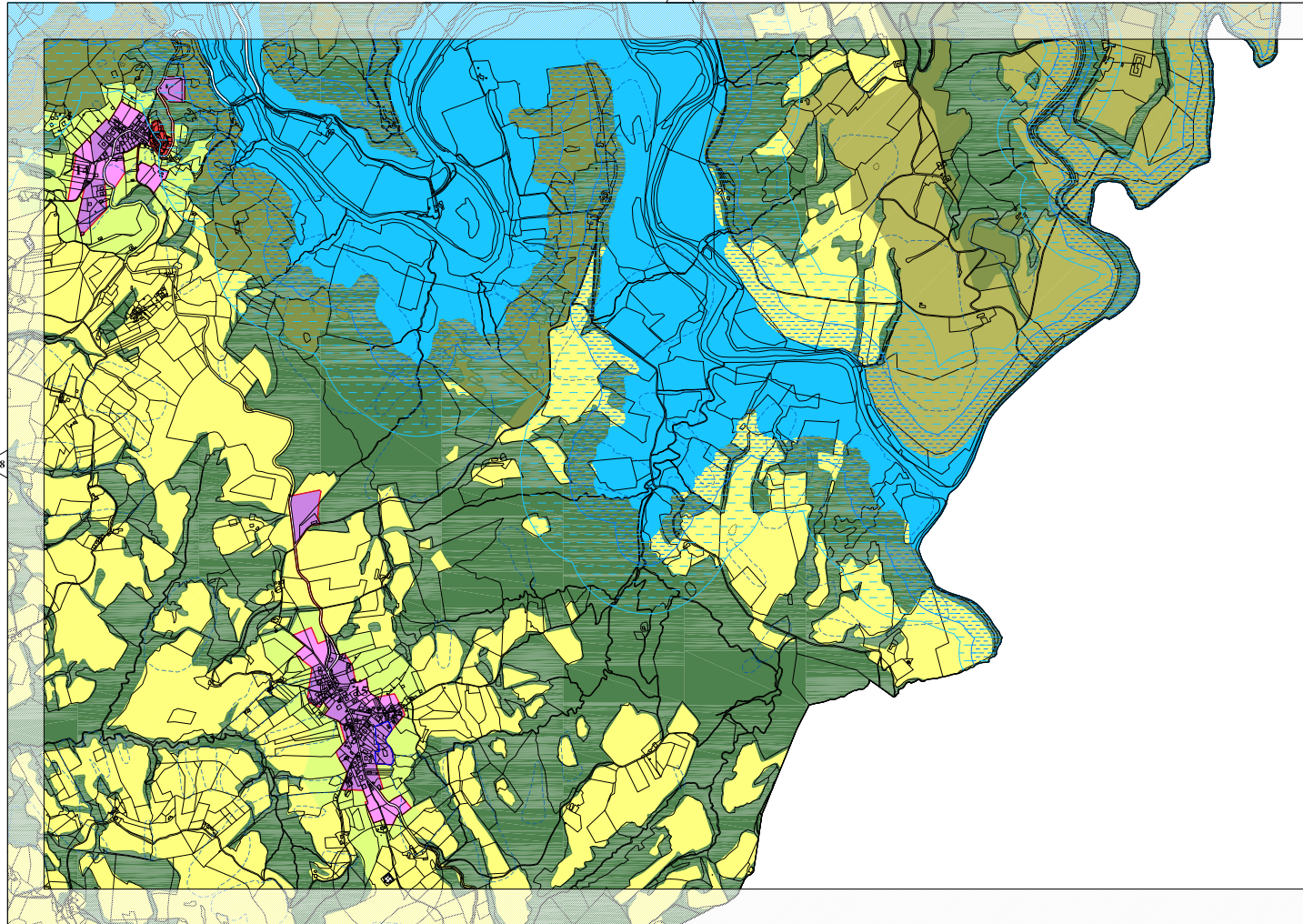


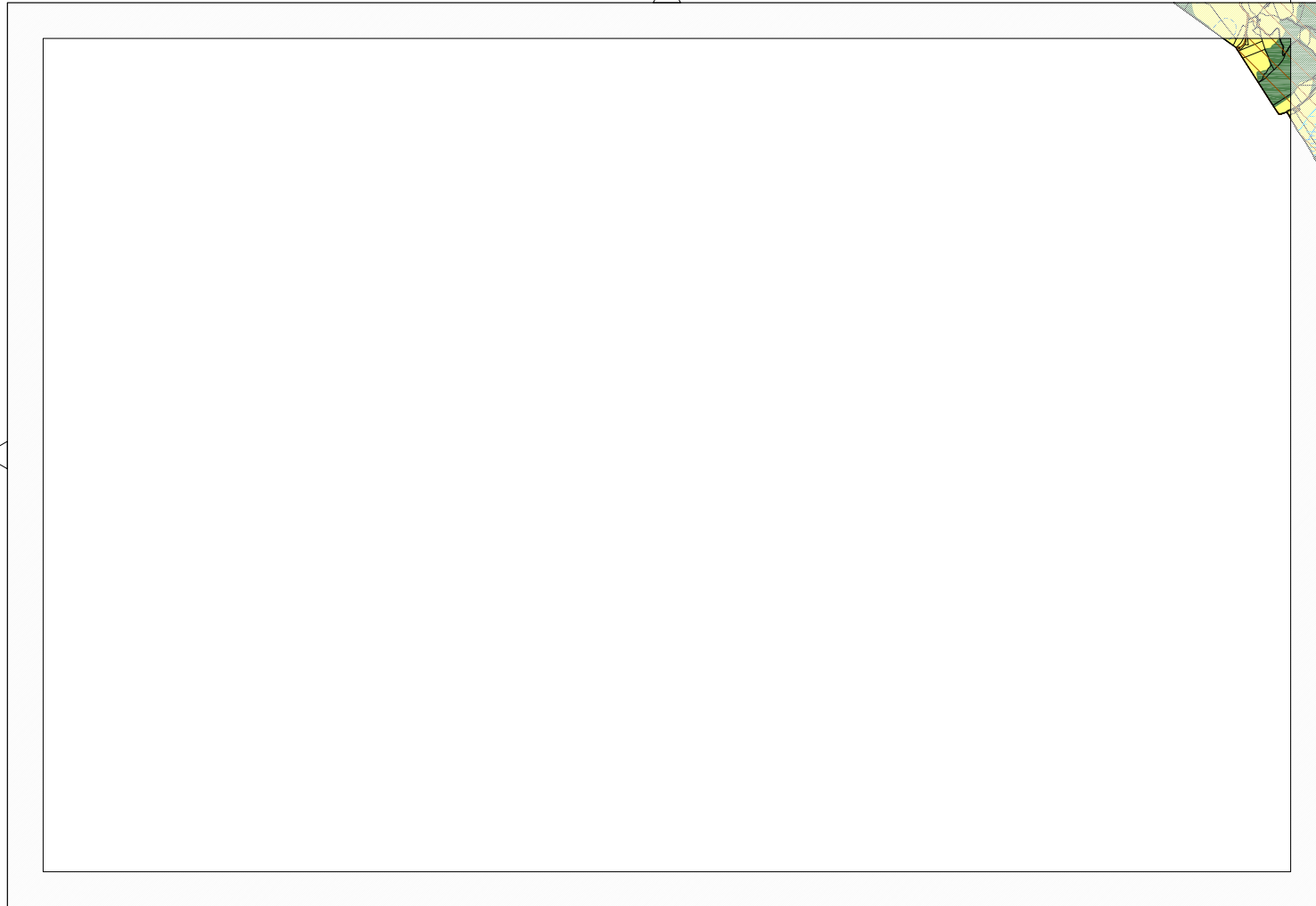


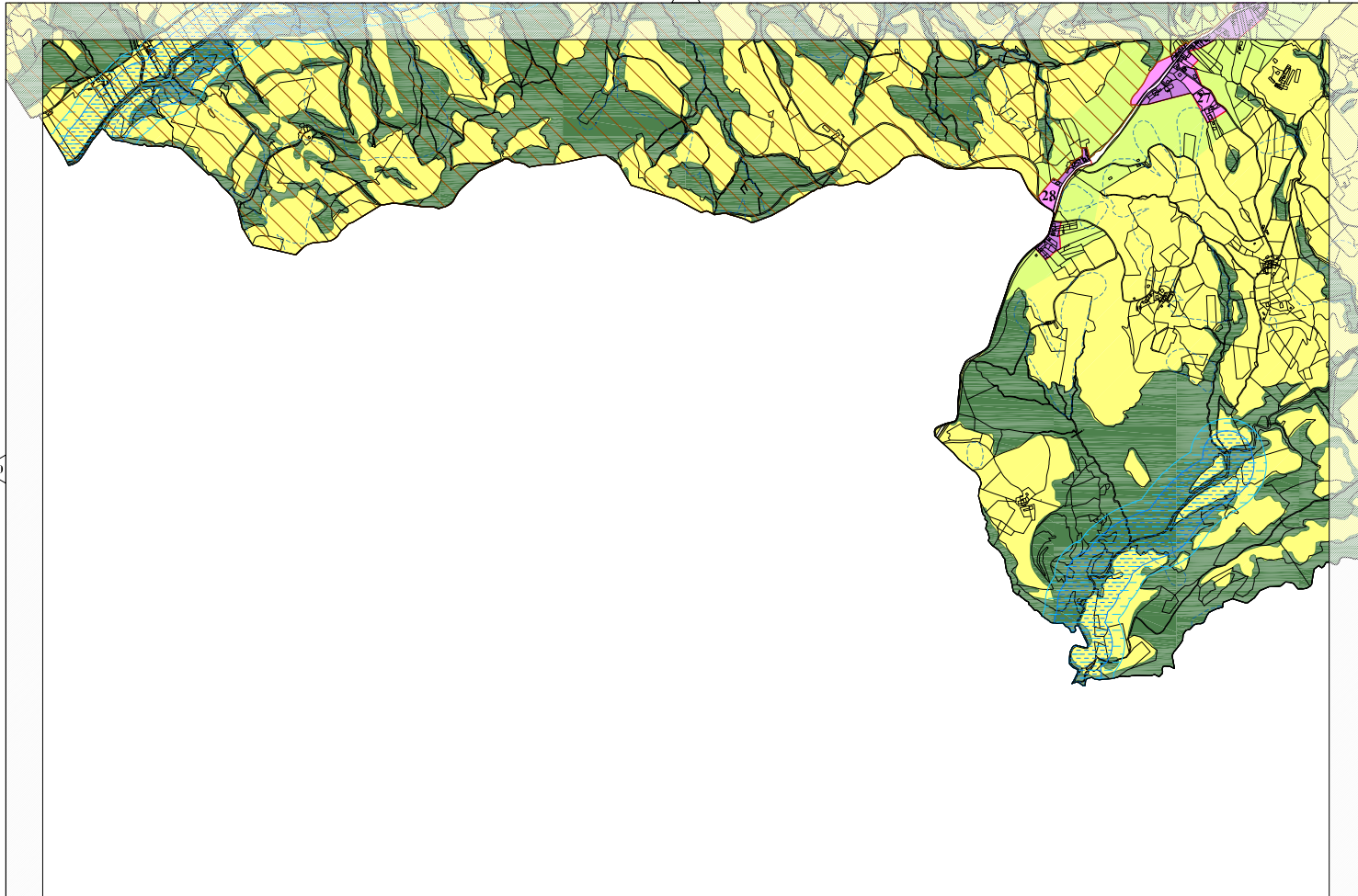


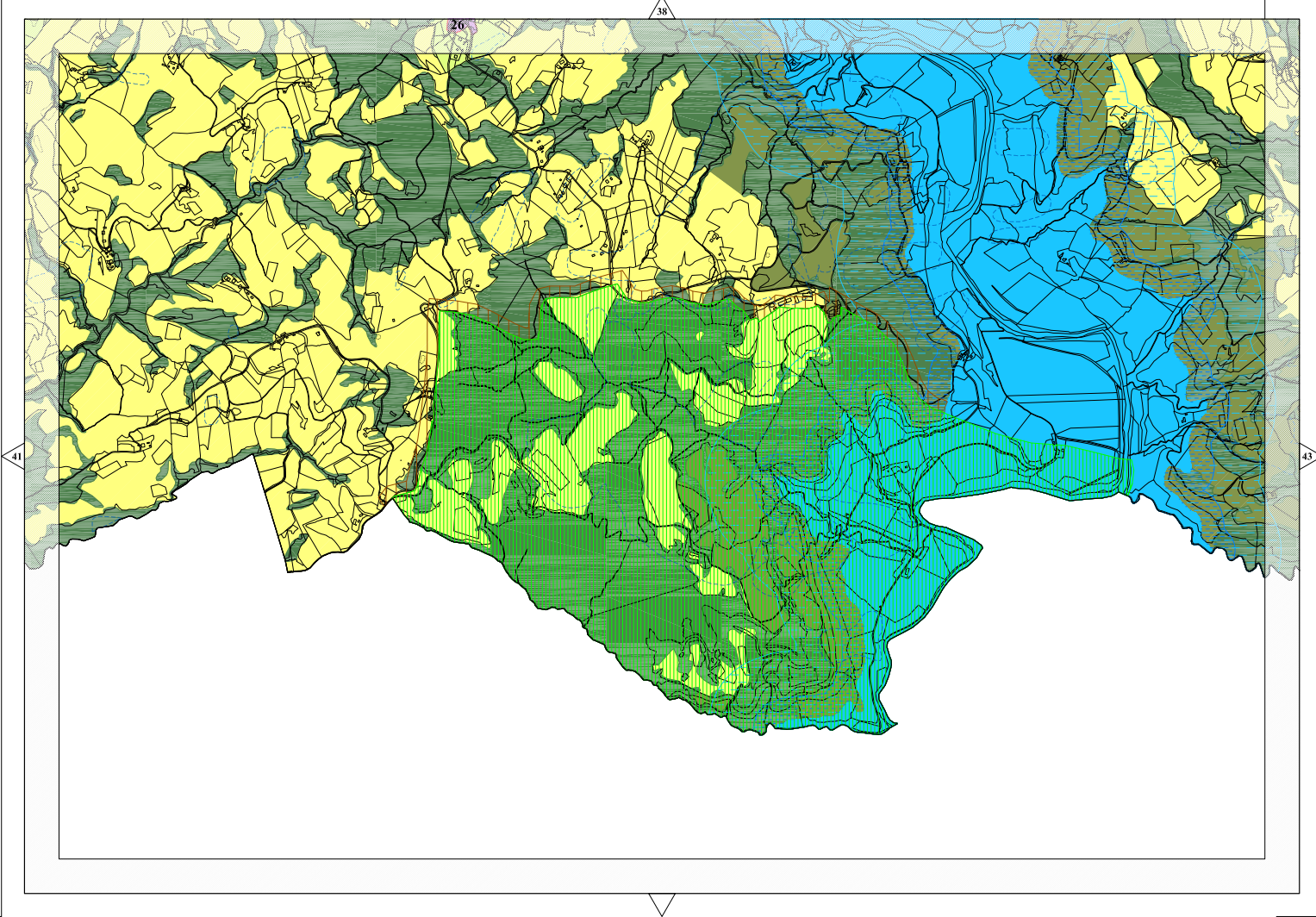


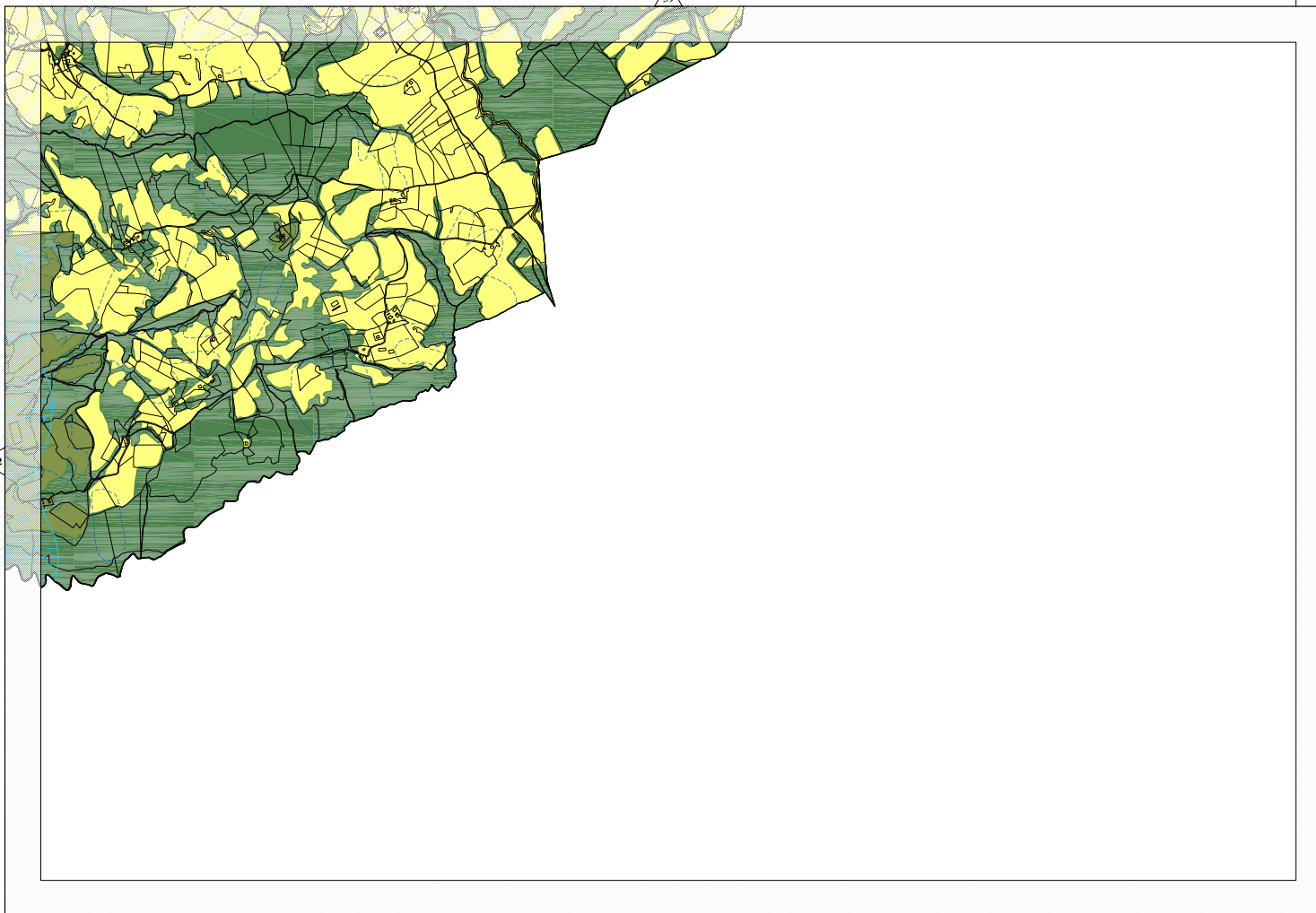


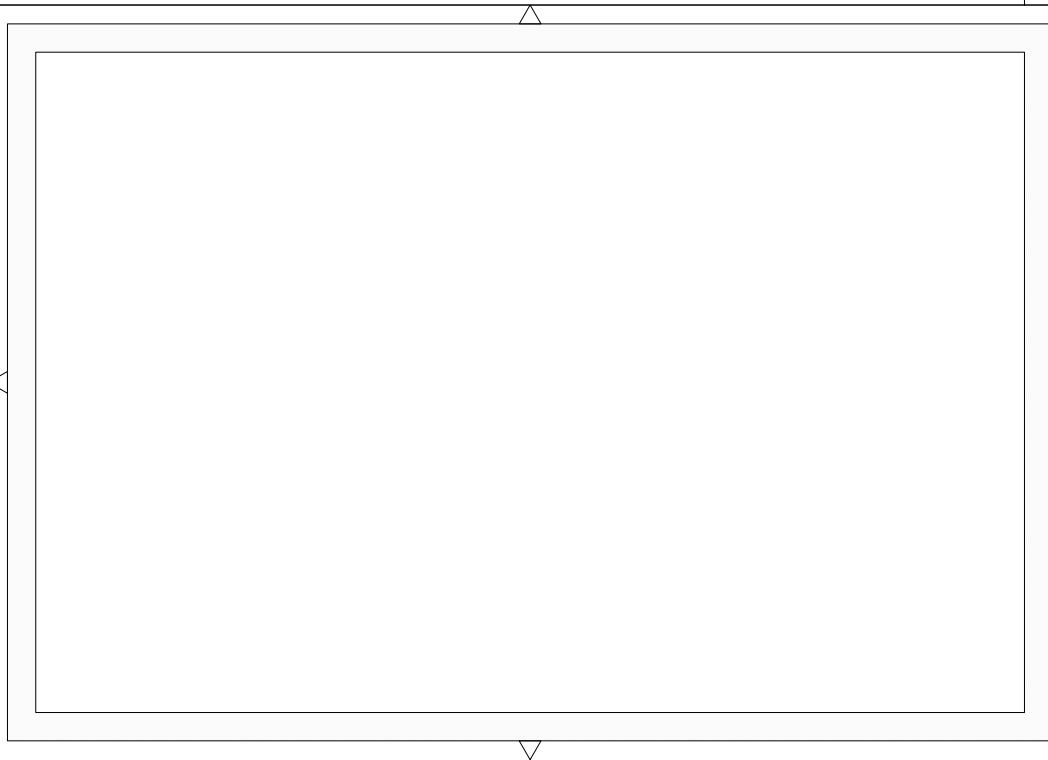












SISTEMA DELLE INFRASTRUTTURE PER LA MOBILITA'

- Viabilità primaria: strade extraurbane primarie esistenti
- Viabilità primaria: strade extraurbane secondarie esistenti
- Viabilità primaria: strade extraurbane secondarie di progetto
- Viabilità secondaria: strade extraurbane secondarie esistenti
- Strade locali esistenti
- Strade locali di progetto
- Strade vicinali
- Impianti per la distribuzione dei carburanti per uso motorizzato

- Arce ad elevato diversità floristica vegetazionale
- Giostre estivi
- Arce di stada
- Siti di interesse comunitario (SIC)
- Oasi di protezione faunistica
- Già del Rottocione
- Fascia di rispetto del SIC
- Arce di interesse faunistico
- Ambiti degli assi civici

SPAZIO URBANO

- Città storica
- Città consolidate
- Città consolidate con prevalenza di spazi aperti
- Città della trasformazione
- Parco
- Arce artigianali e industriali
- Arce di ricovero della popolazione
- Macerze urbane

- Parco dei tre monti
- Strutture pubbliche e private nel Parco dei tre monti
- Cura
- Cimiteri
- Zona di rispetto dei cimiteri
- Fascia di rispetto degli impianti di depurazione

SPAZIO RURALE

- Arce di particolare interesse agricolo
- Arce di particolare valore storico-paesaggistico
- Arce agricole di protezione degli insediamenti
- Arce agricole
- Macerze dei centri rurali
- Macerze degli ambiti monofunzionali
- Terzi collinari e laghetti
- Arce boscate
- Bacini del Chiascio

SISTEMA NATURALISTICO AMBIENTALE

- Macerze fronsi
- Fascia di rispetto dei fiumi e dei laghi
- Arce di interesse paesaggistico
- Arce di particolare interesse naturalistico ambientale
- Arce urbane consolidate e interessate da processi di urbanizzazione
- Arce dell'Agricoltura intensiva
- Sistemi colturali principali di riferimento per la sicurezza