





Regione Umbria
 Attuazione dell'articolo 11 dalla legge 24 giugno 2009, n. 77

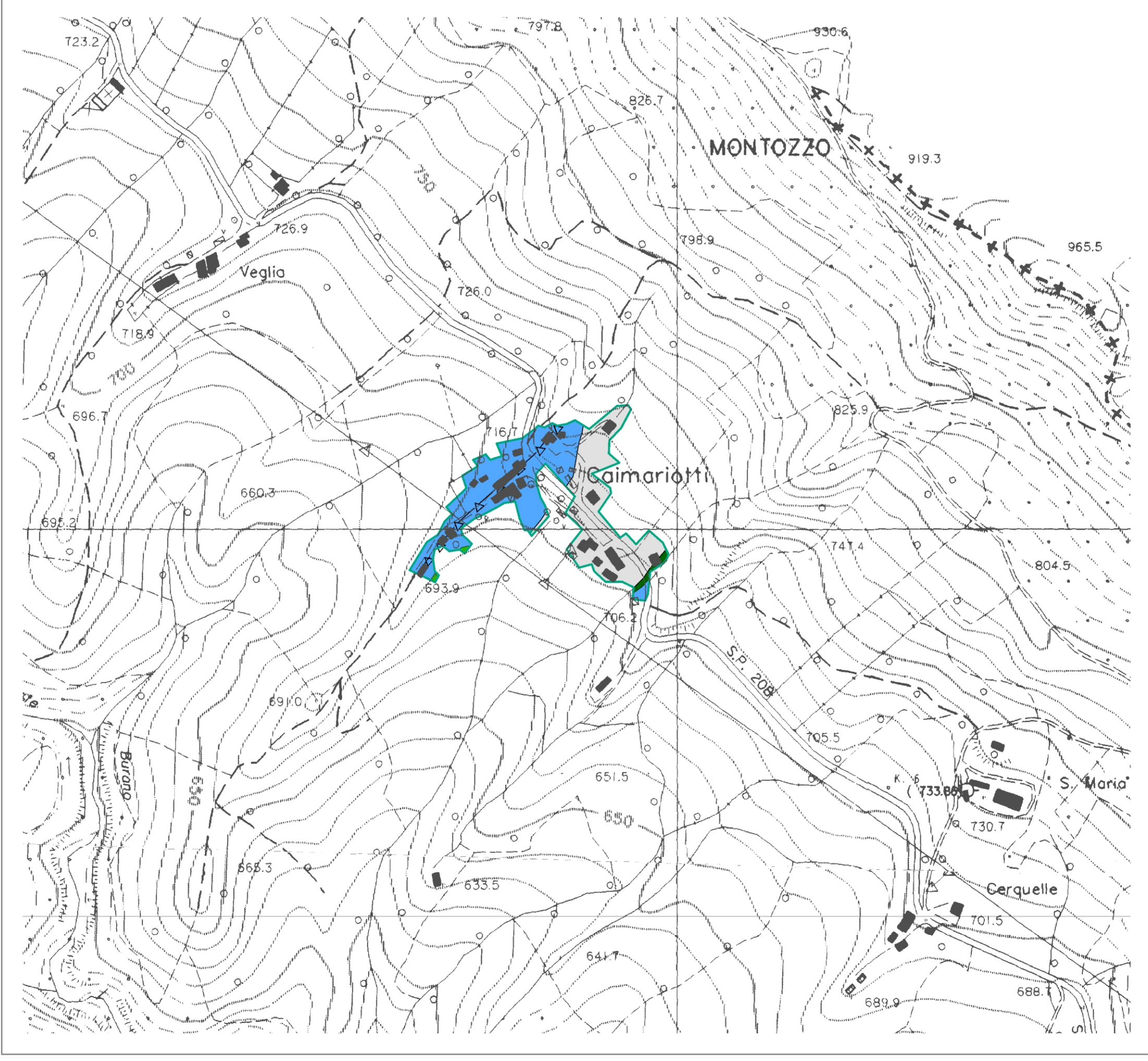
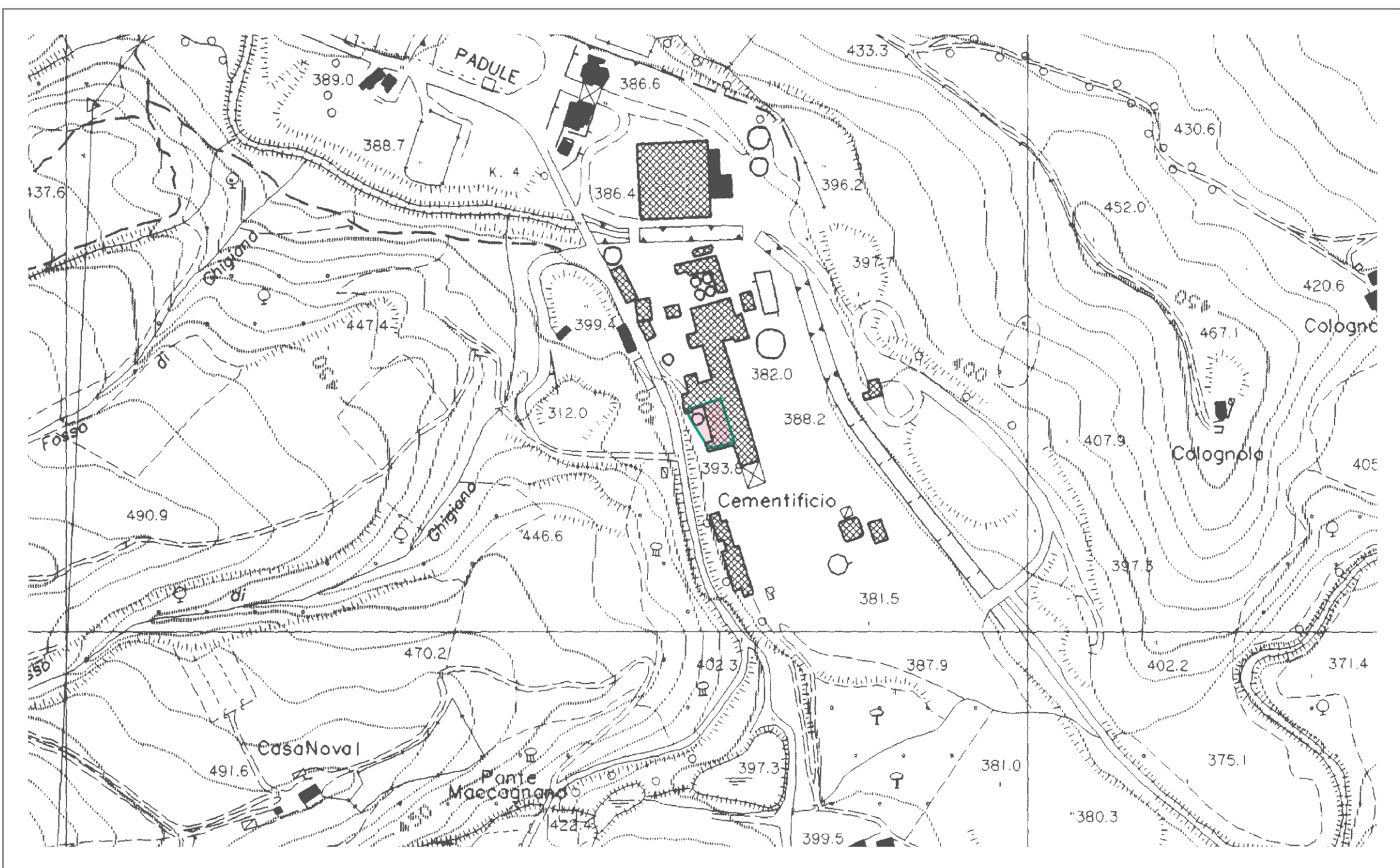
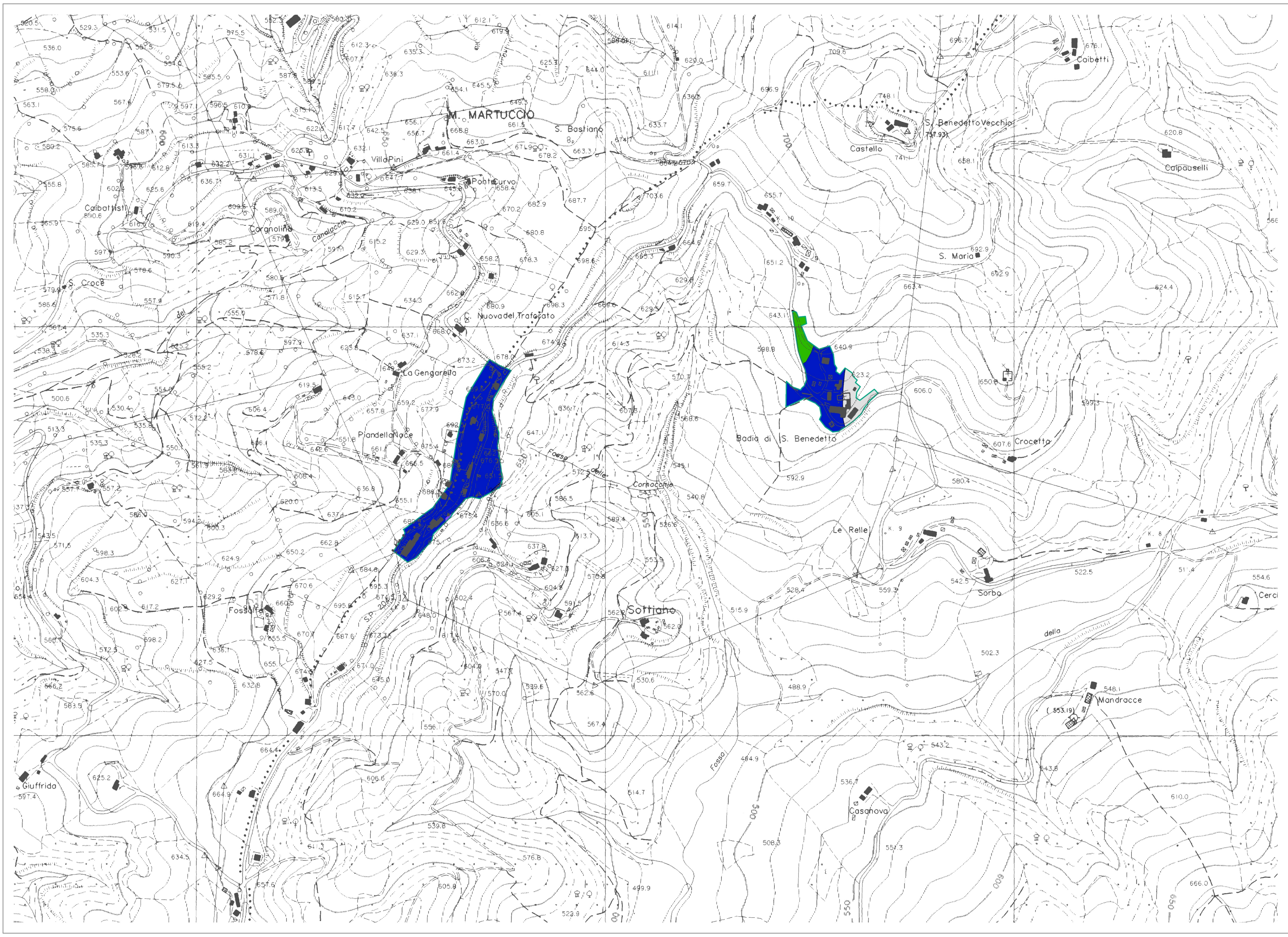
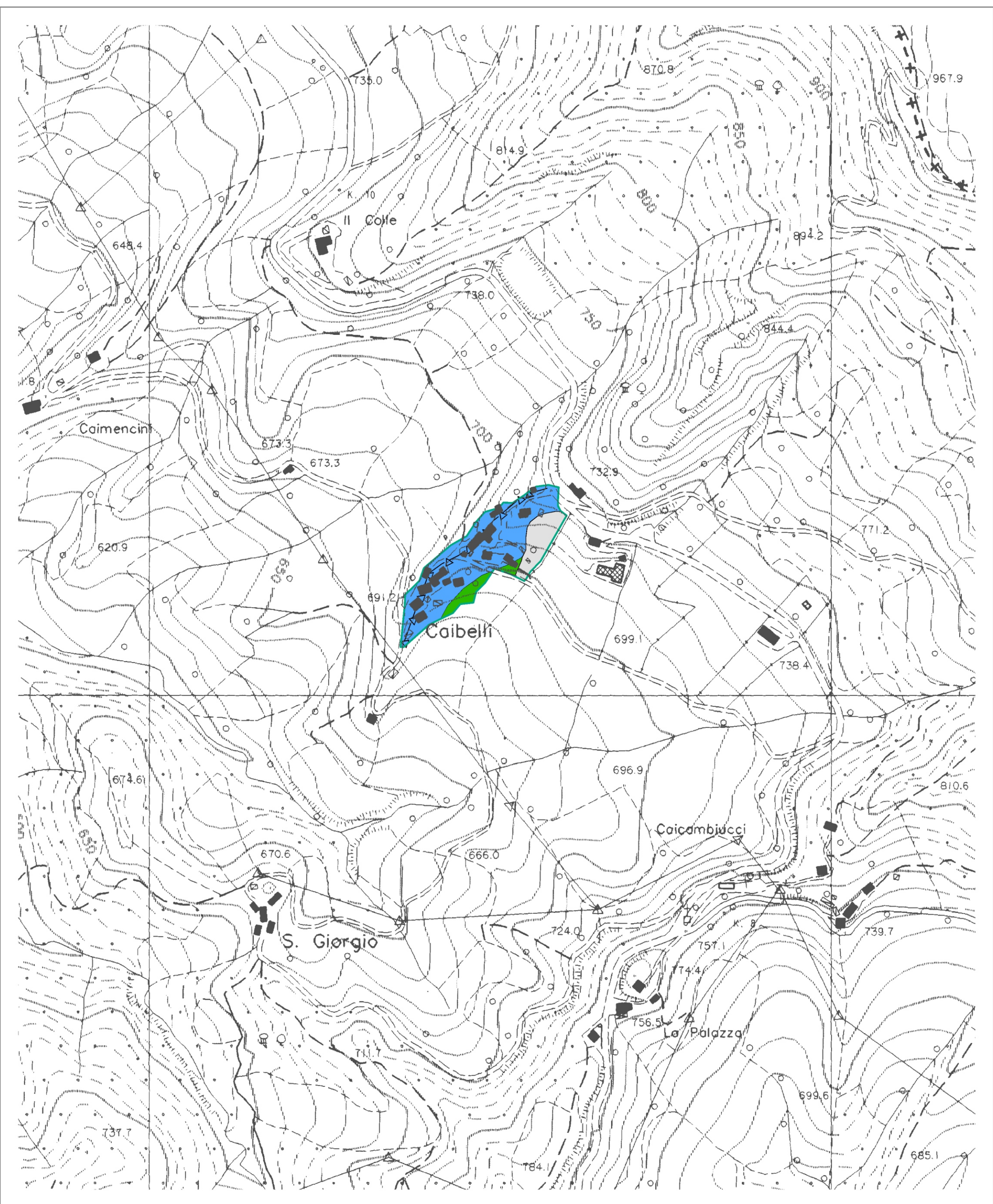
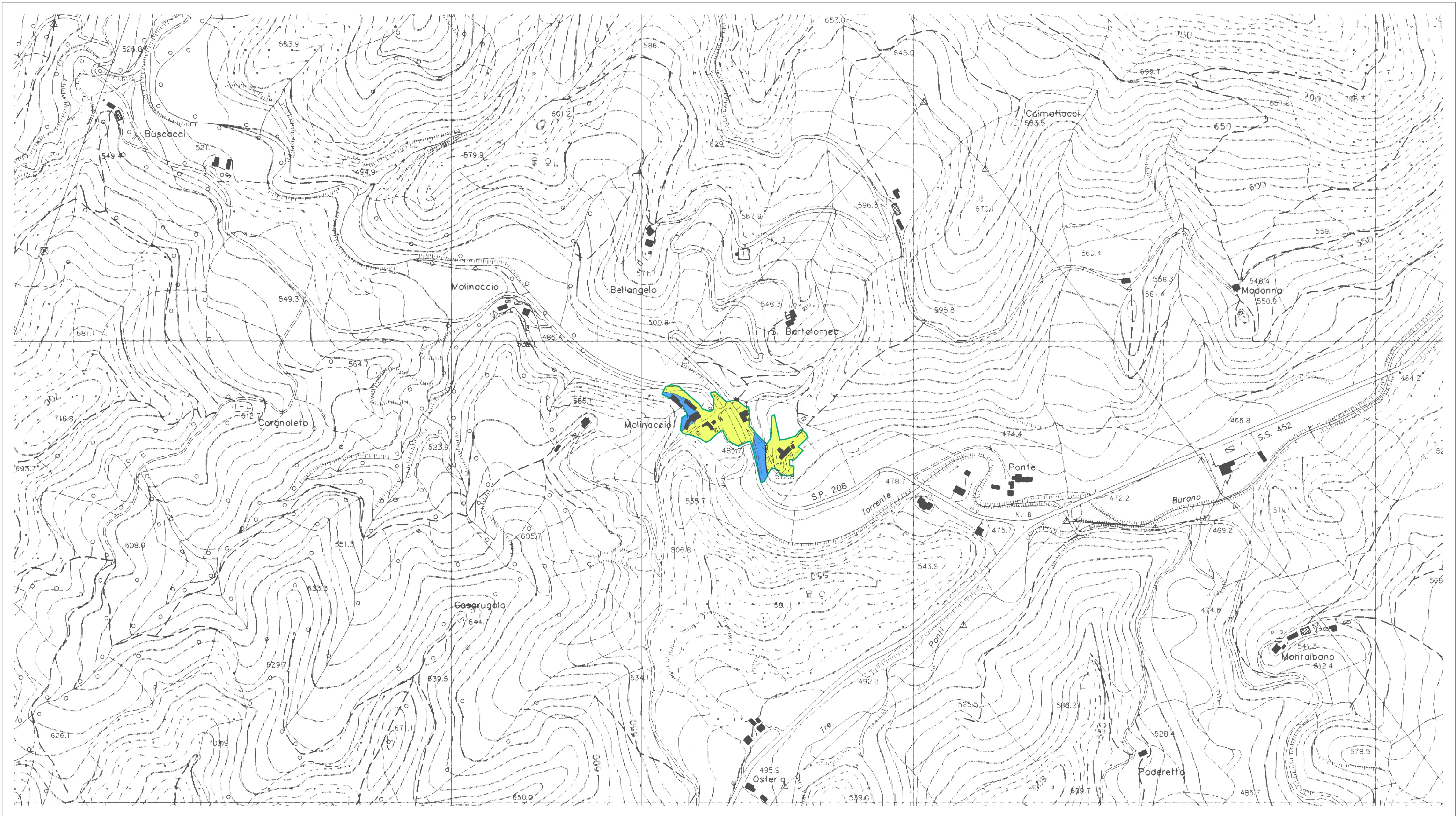
MICROZONAZIONE SISMICA
 Carta delle microzone omogenee
 in prospettiva sismica
 scala 1 : 5.000

Regione Umbria
 Comune di Gubbio





Comune di Gubbio

 Servizio geologico e sismico
Regione Umbria






Legenda




Zone stabili

-  Granulare cementato / stratificato
-  Altezze litologiche / non stratificato



Zone stabili suscettibili di amplificazioni locali

-  Zona 3
-  Zona 4
-  Zona 5

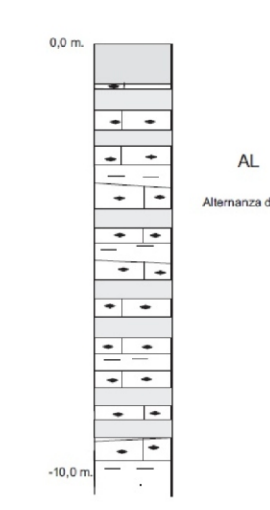
Zone suscettibili di instabilità

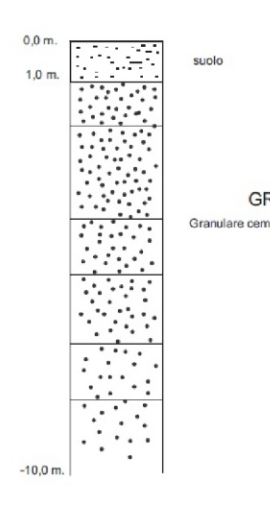
-  Zona di attenzione per instabilità di versante Attiva / non definito
-  Cedimenti differenziali
-  Zona di attenzione per instabilità di versante Non definita / non definito

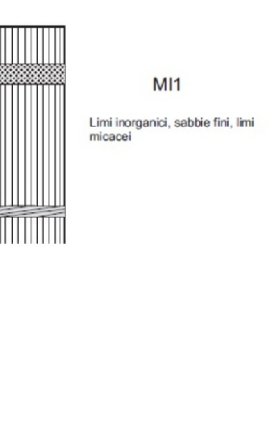
Elementi lineari


-  Cresta
-  Orlo di scarpata morfologica (10-20m)

0 100 200 300 400 500 600 700 800 900 1.000
 Metri

Altezze litologiche / non stratificato


Granulare cementato stratificato


ZONA 3


ZONA 4


ZONA 5
