





Attuazione dell'articolo 11 dalla legge 24 giugno 2009, n. 77

MICROZONAZIONE SISMICA

Carta delle Indagini

scala 1 : 10.000

Regione Umbria
Comune di Gubbio



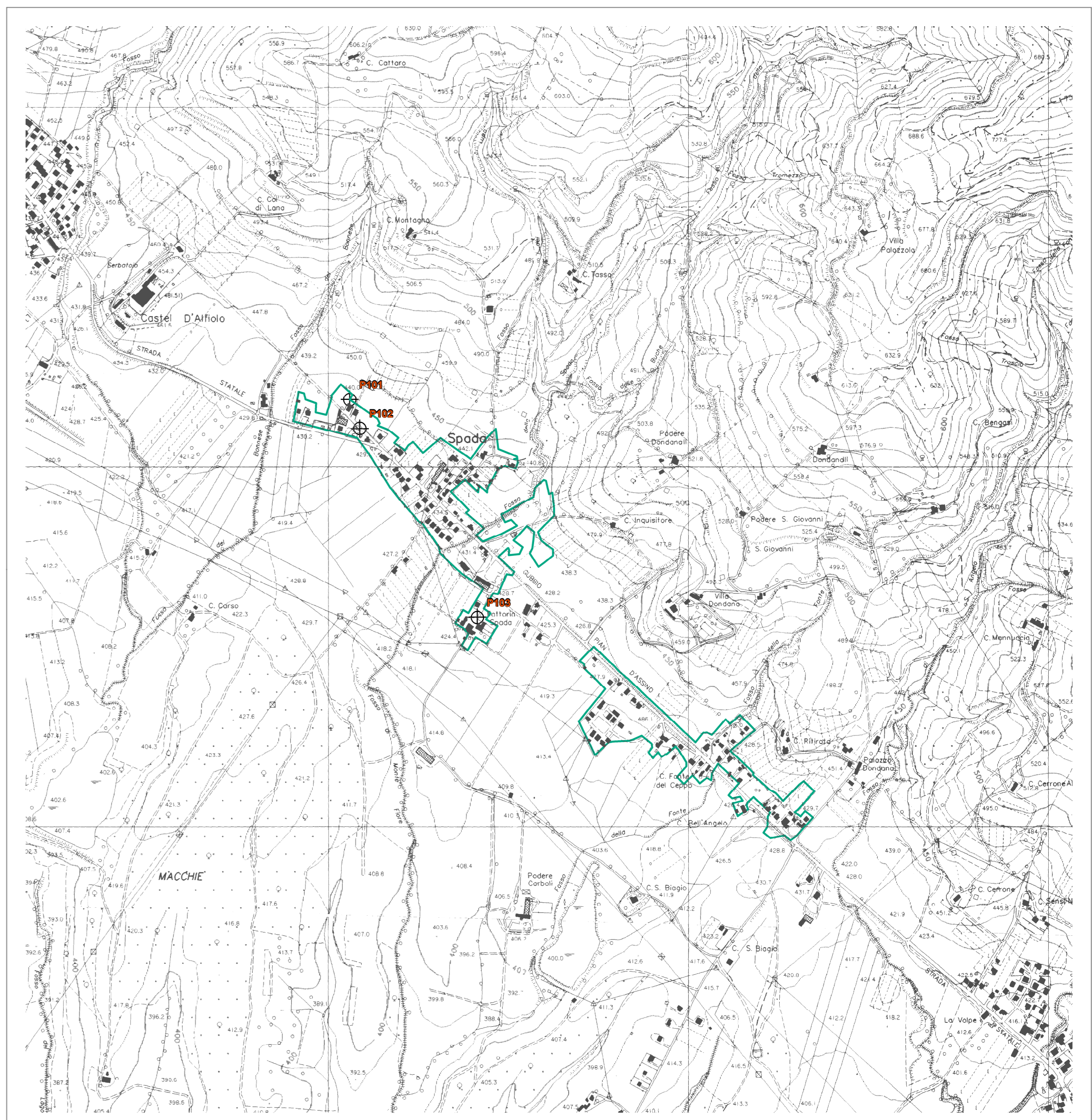
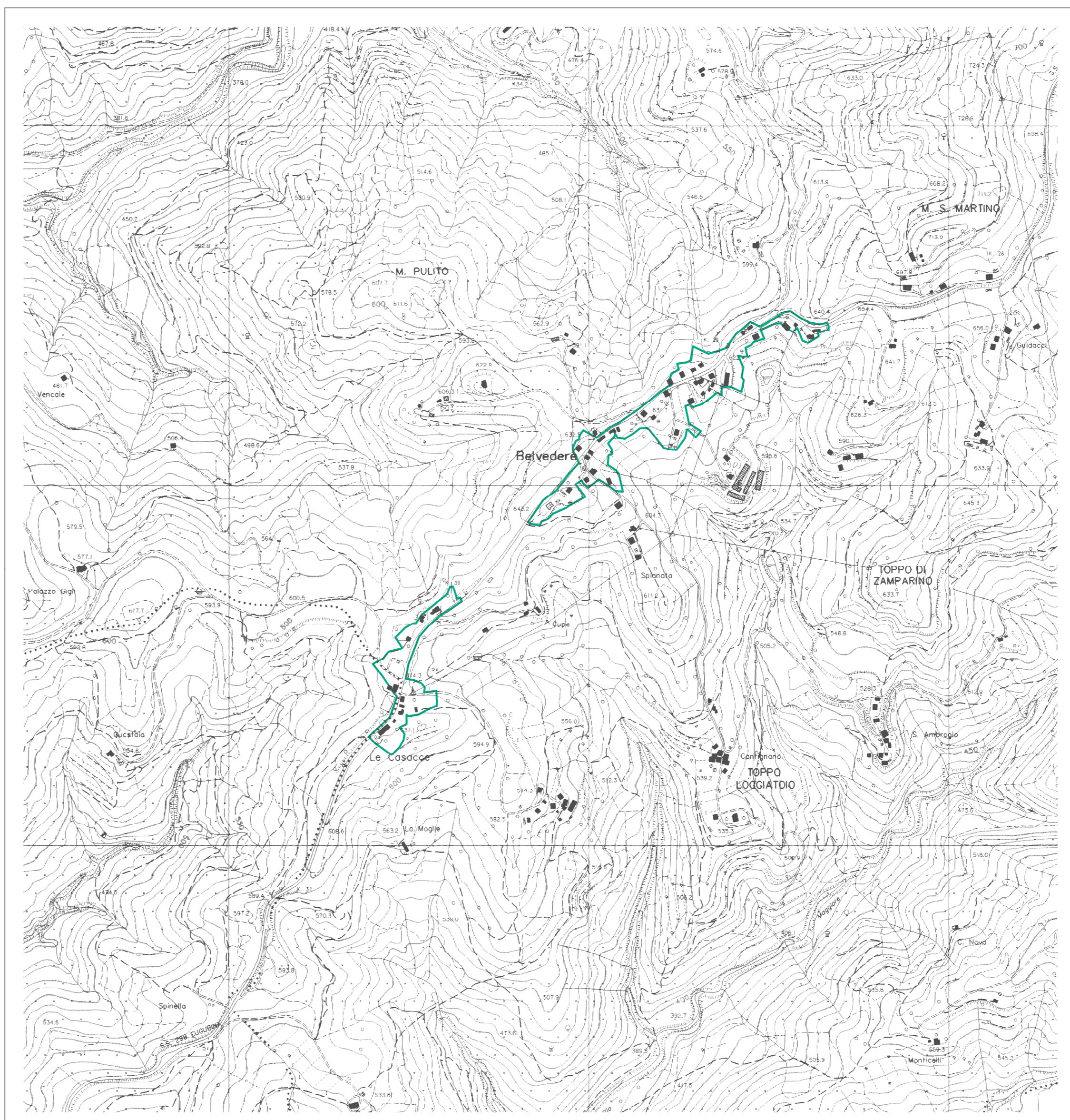
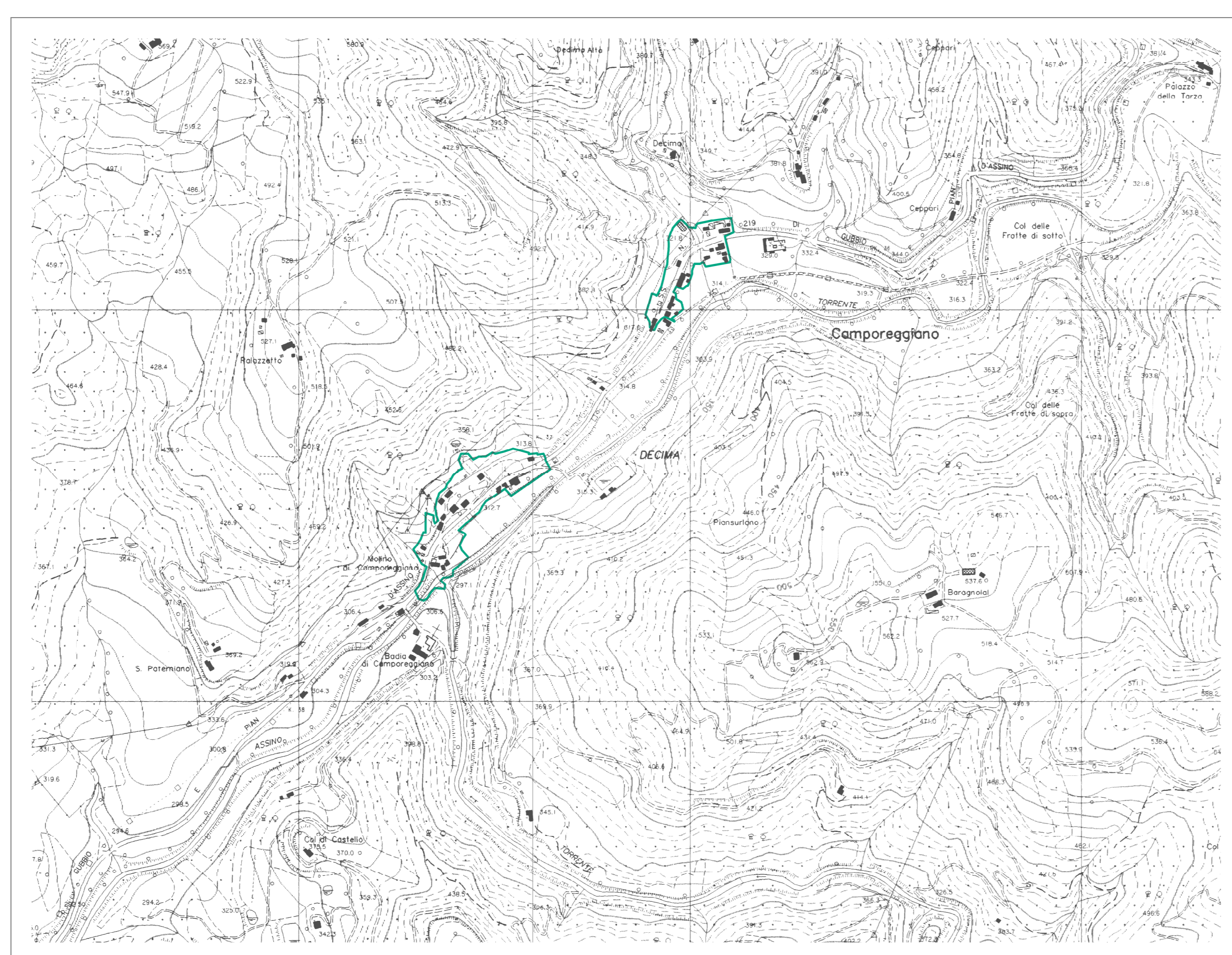
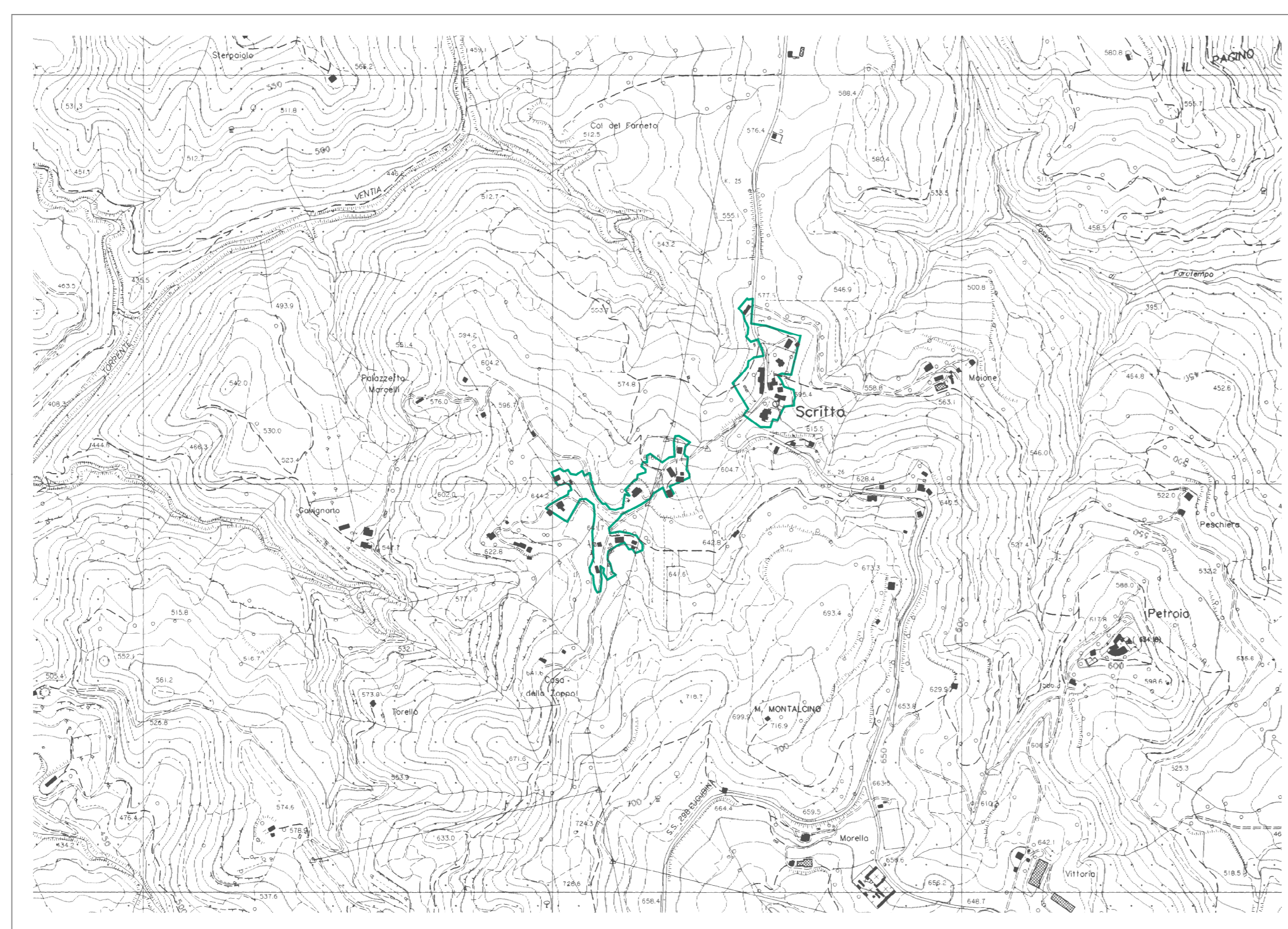
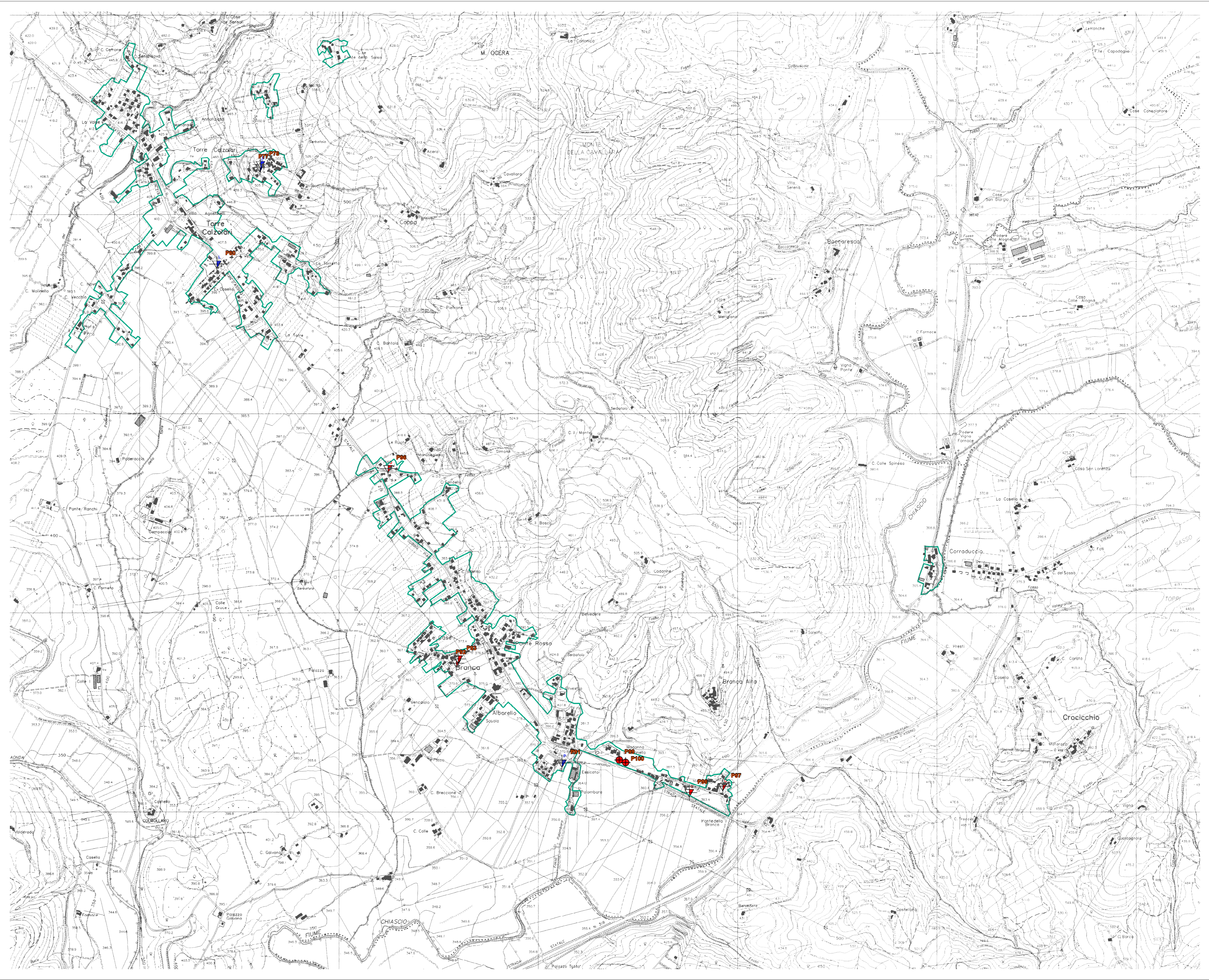
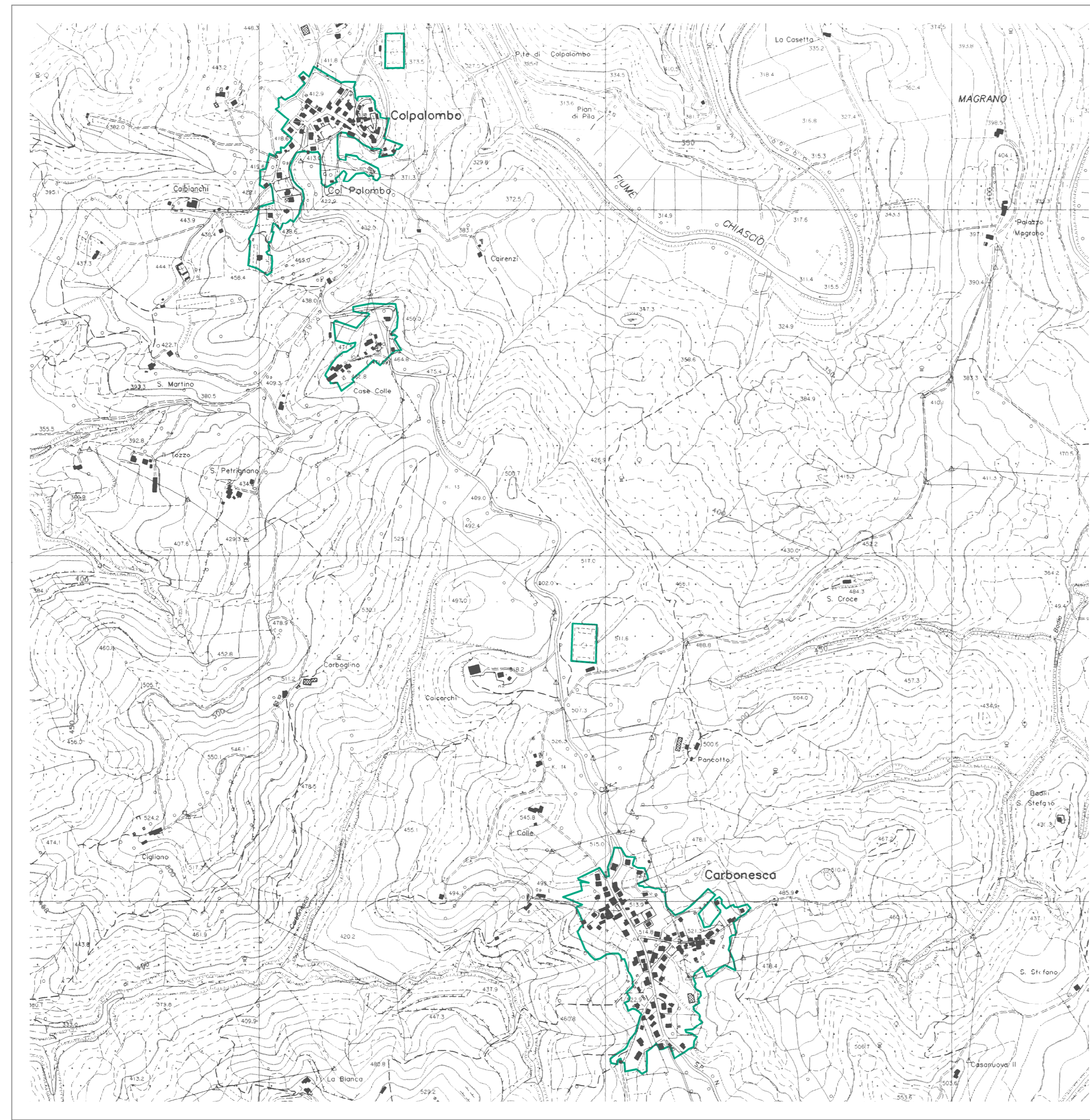
Comune di Gubbio



Servizio geologico
e sismico


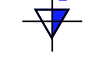
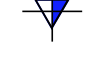




Regione Umbria



Legenda

Indagini puntuali

-  Prova penetrometrica statica con piezometro
-  Prova penetrometrica dinamica leggera
-  Prova penetrometrica dinamica pesante
-  Sondaggio a carotaggio continuo
-  Sondaggio a distruzione di nucleo

